

CREATING OPPORTUNITIES CHANGING LIVES

**16 – 18
Course
Guide**
2026/27





Welcome from the Principal

Our mission is to create opportunities and change lives by providing high-quality teaching, support and facilities to enable you to successfully progress into further training, employment or higher education.

Our values of Kindness, Unity and Excellence are at the heart of everything we do, with a shared purpose of creating a culture of high aspiration that inspires our students to succeed.

We are a uniquely vocational college and offer a wide range of programmes for young people aged 16+, through our full-time courses, apprenticeships and T Levels to ensure you achieve the best results possible and become who you want to be.

We look forward to welcoming you to our KC Community!



*Palvinder Singh Principal and
Chief Executive, Kirklees College*

Contents

Welcome from the Principal	3	How to Apply	131
Contents	4	Supporting You	132
ABC Pledge	6	My KC Student App	133
Our Values	7	Students' Union	134
Our Centres	8	Inclusive Learning	135
Your Study Programme	16	Enrichment and Trips	136
Careers	16	Sports Academy	137
Personal Development Pledge	17	Taster Sessions	138
Maths and English	18	Open Days	139
T Levels	19		
Apprenticeships	20		

DISCLAIMER The college makes every effort to provide up-to-date information but course particulars and supporting information could change at any time. Details are correct at the time of publication. The college reserves the right to make changes at any time. Courses run subject to sufficient numbers.

Course Subject Areas

Animal Care & Land-based	22
Business & Enterprise	28
Construction	34
Creative Industries	48
Digital Development & Computing	56
Education & Early Years	60
Engineering	64
ESOL (English for Speakers of Other Languages)	70
Hair, Beauty & Barbering	74
Health & Social Care	82
Hospitality & Catering	88
Motor Vehicle	94
Process Manufacturing	98
Science	102
Skills for Work & Life	106
Sport & Fitness	112
Travel & Tourism	118
Uniformed Protective Services	122
Access to Higher Education	126
Xplorer	130

ABC Pledge

Our ABC pledge defines our expectations of Kirklees College students. When you study at Kirklees College, you commit to:



- **Attend**, on time, all your timetabled learning activities
- Consistently **behave** in line with our values: Kindness, Unity and Excellence
- Fully **commit** and be prepared to engage in your learning

Our Values

As a member of the KC Community, you are expected to uphold our college values of Kindness, Unity and Excellence. These are our guiding principles of the college and by joining us you agree to follow these values in and out of the classroom.



Our Seven College Centres



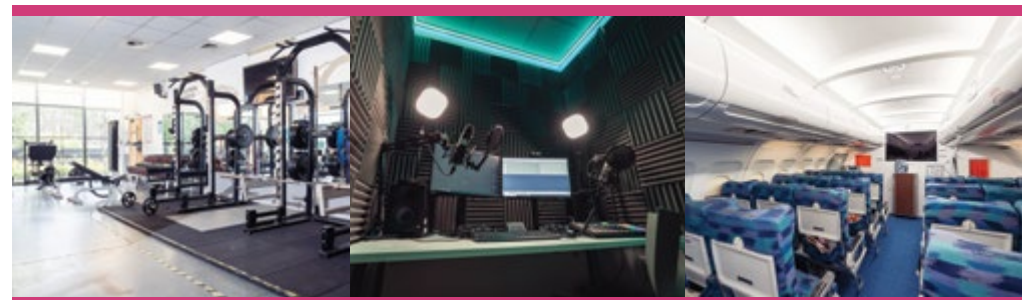
Huddersfield Centre

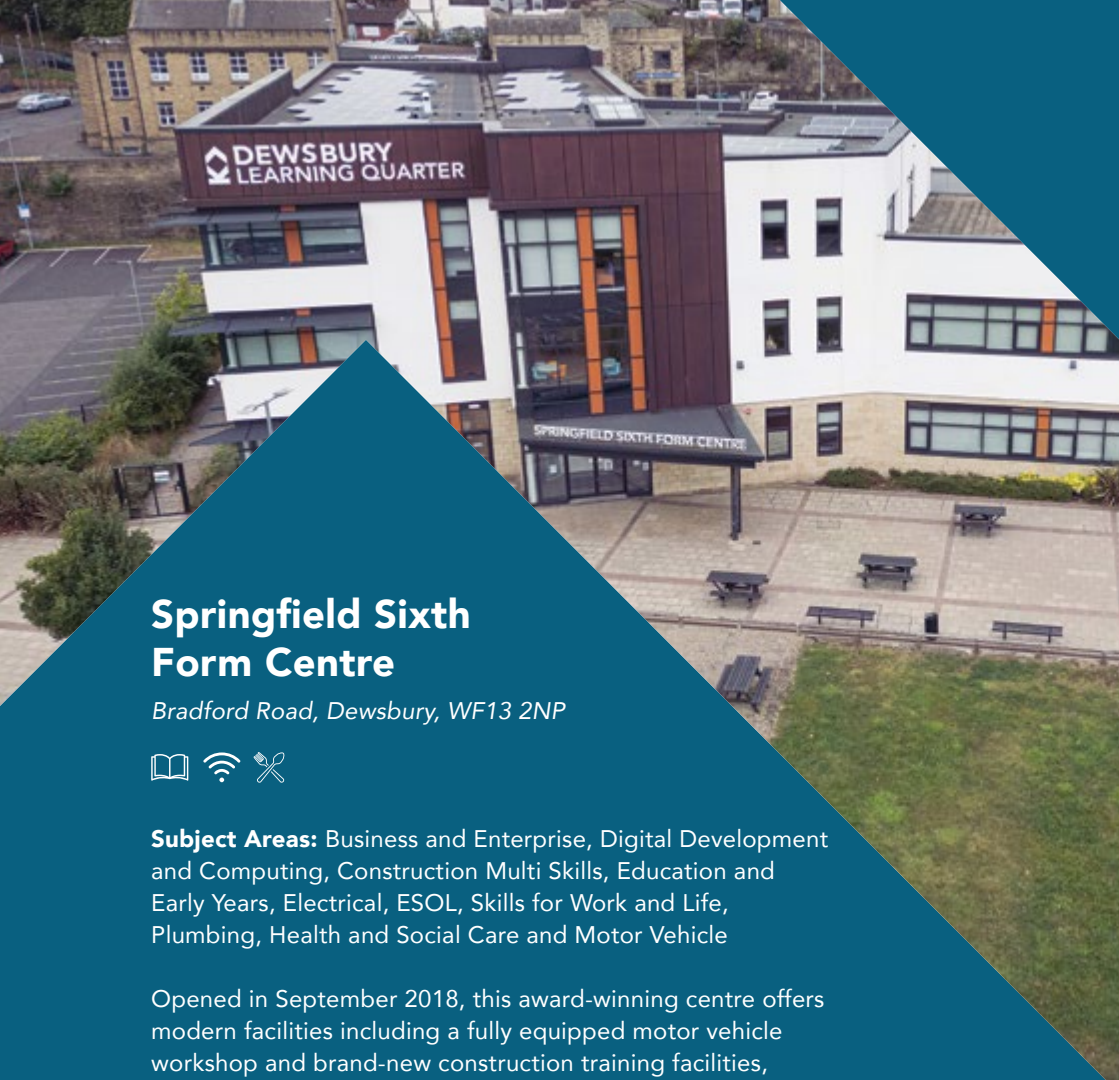
Waterfront Quarter, Manchester Road, Huddersfield, HD1 3LD



Subject Areas: Access to HE, Art and Design, Barbering, Business and Enterprise, Education and Early Years, Digital Development and Computing, ESOL, English and Maths, Skills for Work and Life, Hair and Beauty, Health and Social Care, Hospitality and Catering, Media, Music, Uniformed Protective Services, Science, Sport and Travel and Tourism

This £70 million modern centre is our biggest and offers world-class facilities for vocational learning in the heart of Kirklees. This site boasts music and media studios, industry standard training kitchens and a restaurant, high-spec salons, advanced science labs, mock air cabin, innovation hub and mock nursing ward, providing the chance to train in a real-life environment. Outside of study areas, there is a well-equipped gym and student-led restaurant and coffee shop, Landings 72.





Springfield Sixth Form Centre

Bradford Road, Dewsbury, WF13 2NP



Subject Areas: Business and Enterprise, Digital Development and Computing, Construction Multi Skills, Education and Early Years, Electrical, ESOL, Skills for Work and Life, Plumbing, Health and Social Care and Motor Vehicle

Opened in September 2018, this award-winning centre offers modern facilities including a fully equipped motor vehicle workshop and brand-new construction training facilities, and Learning Resource Centre dedicated to the late Jo Cox MP stocked with the latest IT, digital media equipment and resources to support your studies.



Pioneer Higher Skills Centre

Halifax Road, Dewsbury, WF13 1BD



Subject Areas: Access to HE, Art and Design, Barbering, Beauty Therapy, Business and Enterprise, Counselling, Digital Development and Computing, Education and Early Years, English and Maths, ESOL, and Hairdressing

Pioneer Higher Skills Centre is over 100 years old and has a rich history which reflects the changing demands of the Dewsbury community over time.

This beautiful building retains many of its original architectural features, making it a truly unique place to learn. Its facilities include classrooms, science labs, IT suites, creative workshops, a gallery, photography studio, hair and beauty therapy salons, recreation areas and a coffee shop.



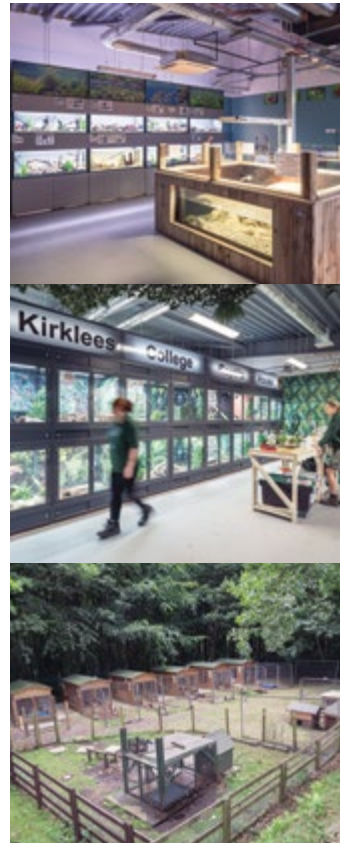
Taylor Hill Animal Centre

Close Hill Lane, Taylor Hill, Huddersfield, HD4 6LE



Subject Areas: Agriculture, Land-Based studies and Animal Care

This is a specialist eco-friendly centre housing a wide range of animals with a new reptile house and aquatics centre, as well as an aviary, small mammal house and dog grooming studio. The site also includes a small farm with extensive outdoor facilities and wildlife environments. Taylor Hill Animal Centre not only houses a range of species, but also has learning spaces and the most up-to-date equipment for our Animal Care and Management students to use.



Brunel Construction Centre

Old Fieldhouse Lane, Off Leeds Road, Huddersfield, HD2 1AG



Subject Areas: Brickwork, Joinery, Plumbing, Electrical, Plastering and Multi Skills

This dedicated centre for skilled construction trades has industry standard workshops equipped with the right tools for the practical and hands-on learning required in the construction sector. The centre has received multiple accolades for its excellent apprenticeship delivery and has expanded massively over the last couple of years.





Engineering Centre

Turnbridge Road, Off St Andrew's Road, Huddersfield, HD1 6AG



Subject Areas: Engineering, Fabrication and Welding, Plant Machinery Operations and Motor Vehicle

This £7.5m specialist centre boasts state-of-the-art equipment and workshops for CNC, manufacturing, maintenance, mechanics, fabrication and welding, as well as student recreation and breakout areas. There is also a dedicated automotive workshop designed to replicate a real-life Motor Vehicle workshop. Within the Motor Vehicle workshop is a state-of-the-art Hybrid Electric Vehicle Centre, which has a range of Hybrid and EV cars, rigs and technologies to bring student's learning up-to-date with the latest sustainable innovations in the motor vehicle industry. In 2025, the Kirklees Operator Skills Hub was also opened here, in partnership with Flannery Plant Hire and Kirklees Council, and provides facilities for specialist Plant Machinery Operations training.



Process Manufacturing Centre

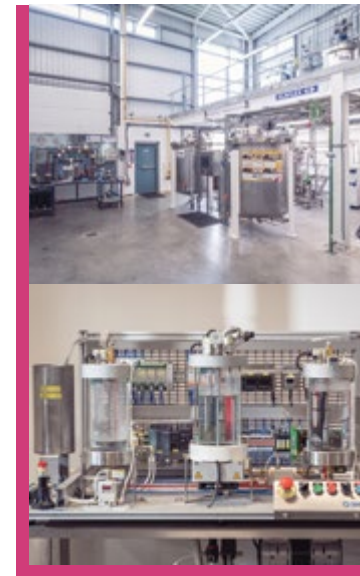
Turnbridge Road, Off St Andrew's Road, Huddersfield, HD1 6AG



Subject Areas: Apprenticeships in Process Manufacturing, Supply Chain, Warehousing and Logistics

The £5m Process Manufacturing Centre is an employer-led training centre for process manufacturing industries offering state of the art facilities and expert tuition to deliver the latest apprenticeship standards.

This flagship centre is the direct result of what can be achieved when the business and education sector work in partnership to produce high calibre candidates and ongoing education and training for a fast-paced industry.



For more information visit: kirkleescollege.ac.uk

Your Study Programme

As a fully vocational college, all our courses are practical and hands-on, and students only study one core subject. This is different to A-levels, or combined A-level and applied general qualifications, but does not mean that you will be in any way disadvantaged when it comes to applying for your next steps, whether that be university, an apprenticeship, or full-time work.

At Kirklees College, you will study one core subject at either Entry Level, Level 1, Level 2, or Level 3. An Extended BTEC Diploma at Level 3 and T Levels are equivalent to 3 A-levels, and carry the same amount of UCAS points for university.

Outside of your core subject lessons, which will be a combination of classroom and practical sessions, you will also have Skills For... sessions where you explore work and life skills with a Personal Development tutor. English, maths and digital development, and Enrichment (extracurricular activities) are also built into your weekly timetable, where required.

If you have not yet achieved a grade 4 in your English and / or maths GCSEs, you will continue to work towards these essential qualifications. This is a legal requirement.

Careers

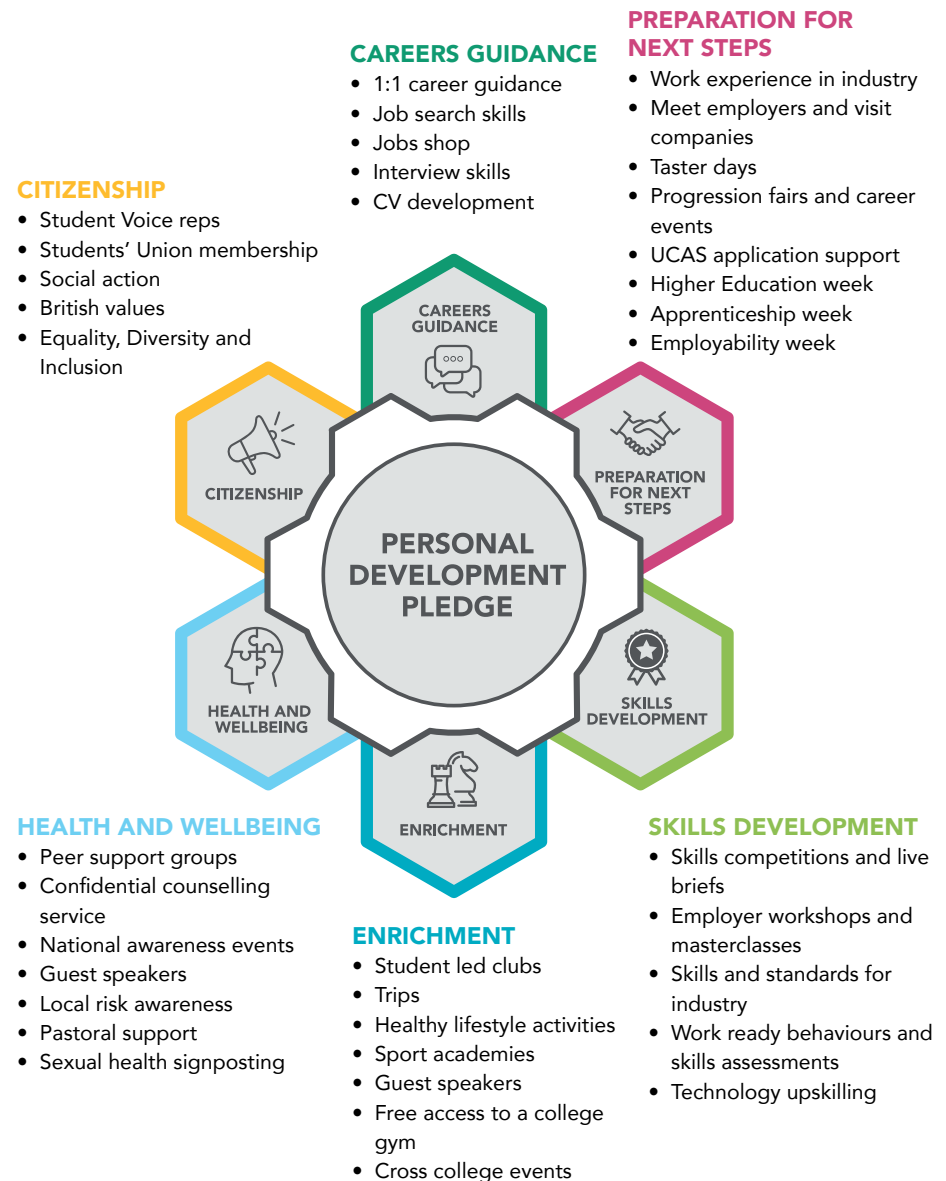
Preparing you for your future is the core purpose of your college education - whether that's employment, further study, self-employment, or personal development.

Our impartial Careers Advisors are here to support you every step of the way. The team are based in the Atrium at the Huddersfield Centre, but also travel to our other centres and are available for online meetings whenever you need them!



Personal Development Pledge

The Personal Development Pledge is our commitment to your future and is an essential part of your study programme. You will focus on these different elements in your Skills For... tutorials with your Personal Development Tutor. The possibilities are endless when you say yes and get involved.



Maths and English

At Kirklees College, all our students are encouraged to improve their current maths and English skills.

If you are joining us without a grade 4 or above in GCSE maths and / or English, you will continue to study for these qualifications alongside your main college course.

You will use Century, an online portal and support tool with tailored lessons and tasks in class to help you improve your grades. When you start at college, your maths / English tutors will explain Century to you fully and you will be set up with an online account.

T LEVELS

AT KIRKLEES COLLEGE 

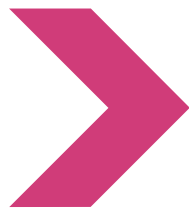
What are T Levels?

A T Level is a two-year course that combines 80 percent classroom learning with 20 percent work placement. T Levels are technical qualifications that will equip you with the skills you need to progress to an apprenticeship, or directly into work, but also carry enough UCAS points for university.

Why choose Kirklees College?

We pride ourselves in offering state-of-the-art facilities and we recognise that your future isn't just about getting your first job, it's about providing you with the knowledge and skills to build a career and pursue your goals in your chosen industry.





Apprenticeships

What is an apprenticeship?

An apprenticeship is a real job that combines practical training with study. You will work alongside experienced staff to gain the right skills and knowledge needed for your chosen career.

An apprenticeship can take between one and four years to complete depending on the level, your previous experience and the area you choose to work in.

Apprenticeships are funded by contributions made by the government and your employer and do not have any fees attached for the apprentice.



Why choose the apprenticeship route?

An apprenticeship offers you the opportunity to learn while you earn and provides you with hands-on experience in your chosen career. You will be trained by industry professionals in a specific job role to gain the skills that employers look for.

An apprenticeship will allow you to enter the world of work and gain valuable on-the-job experience whilst earning money as you study. You won't pay tuition fees and you will make contacts in your chosen industry from the start.

We train over 1,000 apprentices each year, who are employed at both local and national companies.

We offer apprenticeships in the following subject areas:

- Business and Enterprise
- Digital Development
- Construction
- Education and Early Years
- Engineering
- Fabrication and Welding
- Hair and Beauty
- Hospitality and Catering
- Motor Vehicle
- Process Manufacturing
- Science
- Sport



Apprentice Case Studies



"The opportunity to work alongside professionals while developing my knowledge made an apprenticeship the ideal path for my professional growth. Kirklees College's apprenticeship programme has been practical and flexible."

Maisie, Business Administration Level 3

"My favourite part of doing an apprenticeship was being treated like an adult and being given the same respect and responsibilities as my colleagues."

Matthew, Level 2 Apprenticeship Customer Service Practitioner at Myers



SCAN HERE
for more information



For advice and support in applying for finding an employer please contact apprenticeships@kirkleescollege.ac.uk

Animal Care & Land-based

AVERAGE SALARIES

£41,600

Agriculture and Horticulture
Proprietors and Managers

£26,520

Veterinary Nurses

£23,400

Animal Care Service
Occupations

Our Animal Care and Land-based courses can open up hundreds of career opportunities for you, whether your dream job is working in a veterinary practice or as a park ranger.

Our Animal Care and Land-based courses are available across Entry Level, Level 1, 2 and 3. You will study at our Taylor Hill Animal Centre, which has state-of-the-art facilities, including a brand-new £1.5m Reptile House and Aquatic Centre, as well as a dog grooming studio, and small farm, allowing you to gain hands-on experience in your field of study.



“My favourite part of the course is being able to interact with all the animals. Taylor Hill is a very welcoming place, I have never felt left out and have loved my time here.”

Tiana, Level 1 Animal and Land-Based Studies

COURSE LOCATIONS

T Taylor Hill Animal Centre

COURSES	ENTRY REQUIREMENTS	PROGRESSION
Vocational Pathways - Pathway to Animal Care and Land Based Studies Entry 3 T	There are no formal entry requirements for this course.	<ul style="list-style-type: none"> After this course, you can progress onto an accredited Level 1 course within the college
Animal and Land-Based Studies Level 1 T	A minimum of four GCSEs with the following grades: English at 2 or above and maths at 2 or above and two other GCSEs at 2 or above.	<ul style="list-style-type: none"> Horticulture and Landscaping Level 2 Agriculture Level 2 Animal Care Level 2 Dog Grooming Assistants Level 2
Animal Care Level 2 T	A minimum of four GCSEs with the following grades: English at 3 or above and maths at 3 or above and two other GCSEs at 3 or above.	<ul style="list-style-type: none"> Animal Care and Management T Level Employment Animal Management Level 3 Other related Level 3 course
Horticulture and Landscaping Level 2 T	A minimum of grade 3 in both English and maths, as well as two other GCSEs at grade 3 or above.	<ul style="list-style-type: none"> Further study of Horticulture or Construction trade courses at Level 2/3 Apprenticeship Employment
Agriculture Level 2 T	A minimum of four GCSEs with the following grades: English at 3 or above and maths at 3 or above and two other GCSEs at 3 or above.	<ul style="list-style-type: none"> Animal Care and Management T Level Animal Management Level 3 Employment
Dog Grooming Assistants Level 2 T	A minimum of four GCSEs at grade 3 or above including English at grade 3 and maths grade 3 or above and two other GCSEs at 3 or above.	<ul style="list-style-type: none"> Level 3 Dog Grooming course or other related course
T Level Foundation Year Animal Care Level 2 T	A minimum of four GCSEs including GCSE English and maths at grade 3 and two other GCSEs at grade 3.	<ul style="list-style-type: none"> Animal Care and Management T Level

COURSES	ENTRY REQUIREMENTS	PROGRESSION
Animal Management Level 3 T	A minimum of five GCSEs with the following grades: English and maths at 4 or above and three other GCSEs at 4 or above.	<ul style="list-style-type: none"> • HNC Animal Management • Degree Level Course • Employment within the animal care sector
Dog Grooming Level 3 (Full Time) T	A minimum of a Dog Grooming Assistants Level 2 qualification and English at grade 4 or above and maths 3 or above.	<ul style="list-style-type: none"> • Animal Management Level 3 • HNC Animal Management • Degree Level Course • Employment within the animal care sector
Practical Animal Care Skills - SEG Award Level 3 T	A minimum of four GCSEs at grade 4 and above, including maths and English.	<ul style="list-style-type: none"> • HNC Animal Management • University • Employment • Further study
T Level Animal Care and Management Level 3 T	A minimum of five GCSEs at grade 4 or above including English, maths and science.	<ul style="list-style-type: none"> • HNC Animal Management • University • Employment





Business & Enterprise

AVERAGE SALARIES

£66,560

Financial Managers/Directors

£53,040

Business and Financial Project Managers

£48,360

Marketing and Commercial Managers

Our interactive approach to learning will introduce you to the professional world of business. Whether you're interested in finance or marketing, this is the ideal platform to prepare you for a career in business.

Covering a wide range of business skills, from planning campaigns to decision making, our business courses don't just cover theory but offer you the chance to work on live briefs set by our employer partners to give you practical experience from the get-go.



“What I enjoy most about the course is being taught by experienced teachers and having enough facilities to support my education.”

Danai, Level 2 Business and Enterprise

COURSE LOCATIONS

- H** Huddersfield Centre
- S** Springfield Sixth Form Centre

COURSES	ENTRY REQUIREMENTS	PROGRESSION
Business and Retail Level 1 S	A minimum of four GCSEs with the following grades: English at 2 or above and maths at 1 or above and two other GCSEs at 2 or above.	<ul style="list-style-type: none"> Business and Enterprise Level 2
Vocational Studies Business Level 1 H	A minimum of four GCSEs with the following grades: English at 2 or above and maths at 1 or above and two other GCSEs at 2 or above.	<ul style="list-style-type: none"> Business and Enterprise Level 2 Level 2 apprenticeship
Business and Enterprise Level 2 H S	A minimum of four GCSEs with the following grades: English and maths at 3 or above and two other GCSEs at 3 or above.	<ul style="list-style-type: none"> Business and Enterprise Level 3 Level 3 apprenticeship Business and Administration: Team Leadership and Management T Level
Business and Enterprise Level 3 H S	A minimum of five GCSEs with the following grades: English and maths at 4 or above and three other GCSEs at 4 or above.	<ul style="list-style-type: none"> Higher Education Degree Apprenticeship
T Level Foundation Year Business Level 2 H	A minimum of GCSE English at grade 4 or above and four other GCSEs including maths at grade 3 or above.	<ul style="list-style-type: none"> T Level in Management and Administration: Team Leadership and Management
T Level Management and Administration: Team Leadership and Management Level 3 H	A minimum of GCSE English at grade 5 or above, and four other GCSEs grade 4 or above to include maths.	<ul style="list-style-type: none"> Higher Education Employment

COURSES	ENTRY REQUIREMENTS	PROGRESSION
Accountancy Apprenticeship Level 2 H	<p>A minimum of GCSE English and maths at grade 4 or above.</p> <p>To start your apprenticeship you must have secured employment that the college has agreed is suitable.</p>	<ul style="list-style-type: none"> • Level 3 apprenticeship • Other apprenticeship or progression into an appropriate job role
Customer Service Practitioner Apprenticeship Level 2 H	<p>A minimum of GCSE English and maths at grade 3 or above.</p> <p>To start your apprenticeship you must have secured employment that the college has agreed is suitable.</p>	<ul style="list-style-type: none"> • Level 3 apprenticeship • Employment
Assistant Accountant Apprenticeship Level 3 H	<p>A minimum of an appropriate Level 2 apprenticeship and GCSE English and maths at grade 4 or above.</p> <p>To start your apprenticeship you must have secured employment that the college has agreed is suitable.</p>	<ul style="list-style-type: none"> • Level 4 apprenticeship
Business Administration Apprenticeship Level 3 H	<p>A minimum of GCSE English and maths grade 4 or above.</p> <p>To start your apprenticeship you must have secured employment that the college has agreed is suitable.</p>	<ul style="list-style-type: none"> • Higher level apprenticeship • Leadership and management qualification • Employment



Construction

AVERAGE SALARIES

£40,040

Electrical Technicians

£47,840

Construction Project Directors

£34,320

Construction and Building
Trades

A career in Construction can be a career for life. Committing to this worldwide industry can offer personal and professional development, a bright financial future and the chance to create something that can last a lifetime.

If you're looking for a hands-on job with fantastic job prospects and career progression, then our qualifications in Construction are perfect for you. Job roles within the field are wide ranging, including specific trades such as bricklaying and plastering, as well as design, management and health and safety careers.



"I enjoy the creative aspect of the course. The facilities are amazing as well, we've got all the workshops with very good machinery and tools."

Alex, Level 1 Carpentry and Joinery

COURSE LOCATIONS

- B** Brunel Construction Centre
- S** Springfield Sixth Form Centre

Multi Skills

COURSES	ENTRY REQUIREMENTS	PROGRESSION
Vocational Pathways - Pathway to Multi Skills (Construction) Entry 3 B	There are no formal entry requirements for this course.	<ul style="list-style-type: none"> After you finish the course, you may be offered the chance to transition to a Level 1 course in the Construction department, or another college course of your choice. A relevant GCSE in English and maths will support this transition.
Construction Multi Skills Level 1 S B	A minimum of GCSE English and maths grade 2.	<ul style="list-style-type: none"> Level 2 full-time construction course Apprenticeship
Construction Multi Skills Level 2 S B	A minimum of GCSE English and maths, one of these grades needs to be a minimum of grade 3 and the other a minimum of grade 2.	<ul style="list-style-type: none"> Level 3 full-time construction course Apprenticeship

Landscaping and Groundworks

COURSES	ENTRY REQUIREMENTS	PROGRESSION
Level 1 Diploma in Groundworks (Construction and Civil Engineering) B	A minimum of GCSE maths and English at grade 2 or above.	<ul style="list-style-type: none"> Level 2 construction course Level 2 apprenticeship
Level 2 Groundworks Apprenticeship B	A minimum of grade 2 in both English and maths. To start your apprenticeship, you must have secured employment that the college has agreed is suitable.	<ul style="list-style-type: none"> Level 3 apprenticeship Level 3 construction course Employment



Brickwork

COURSES	ENTRY REQUIREMENTS	PROGRESSION
Bricklaying Level 1 B	A minimum of GCSE English and maths grade 2 or above.	<ul style="list-style-type: none"> Level 2 Bricklaying Bricklaying apprenticeship
Bricklaying Level 2 B	A minimum of a Level 1 relevant vocational qualification and GCSE maths and English grade 2.	<ul style="list-style-type: none"> Bricklaying apprenticeship Employment
Bricklaying Apprenticeship Level 2 B	<p>A minimum of GCSE English and maths at grade 2 or above.</p> <p>To start your apprenticeship you must have secured employment that the college has agreed is suitable.</p>	<ul style="list-style-type: none"> Higher level qualification Employment

COURSE LOCATIONS

- B** Brunel Construction Centre



Electrical

COURSES	ENTRY REQUIREMENTS	PROGRESSION
Electrical Installation Level 1 S B	A minimum of GCSE English and maths at grade 2 or above.	<ul style="list-style-type: none"> Electrical Installation Level 2 Apprenticeship
Electrical Installation Level 2 S B	A minimum of GCSE English and maths grade 4 or above, or a Level 1 relevant vocational qualification.	<ul style="list-style-type: none"> Level 3 Electrical Installation course Apprenticeship Building Services for Construction: Electrotechnical Engineering T Level
Electrical Installation Level 3 B	A minimum of a Level 2 in Electrical Installation and grade 4 in English and maths.	<ul style="list-style-type: none"> Apprenticeships Further short course opportunities – 18th Edition and Testing & Inspection Higher Education
T Level Building Services Engineering for Construction: Electrotechnical Engineering Level 3 B	A minimum of GCSE maths or science at grade 5 and four other GCSEs at grade 4 or above to include English, maths and science.	<ul style="list-style-type: none"> HNC Electrical/Electronic Engineering Apprenticeship Employment
Electrical Installation Apprenticeship Level 3 B	<p>A minimum of GCSE English and maths at grade 4 or above.</p> <p>To start your apprenticeship you must have secured employment that the college has agreed is suitable.</p>	<ul style="list-style-type: none"> Level 4 qualification Professional qualifications Employment

COURSE LOCATIONS

- B Brunel Construction Centre
- S Springfield Sixth Form Centre



COURSE LOCATIONS

- B** Brunel Construction Centre

Joinery

COURSES	ENTRY REQUIREMENTS	PROGRESSION
Carpentry and Joinery Level 1 B	A minimum of GCSE English and maths grade 2 or above.	<ul style="list-style-type: none"> Level 2 Bench Joinery Apprenticeship
Bench Joinery Level 2 B	A minimum of a Level 1 relevant vocational qualification and GCSE English and maths at grade 2.	<ul style="list-style-type: none"> Joinery apprenticeship
Furniture Manufacturer (Modern Upholster) Apprenticeship Level 2 B	<p>A minimum of GCSE English and maths at grade 2 or above.</p> <p>To start your apprenticeship you must have secured employment that the college has agreed is suitable.</p>	<ul style="list-style-type: none"> Level 3 apprenticeship Level 3 related course Employment
Furniture Manufacturer (Wood Machinist) Apprenticeship Level 2 B	<p>A minimum of GCSE English and maths at grade 2 or above.</p> <p>To start your apprenticeship you must have secured employment that the college has agreed is suitable.</p>	<ul style="list-style-type: none"> Level 3 apprenticeship Level 3 related course Employment
Site Carpentry Apprenticeship Level 2 B	<p>A minimum of GCSE English and maths at grade 2 or above.</p> <p>To start your apprenticeship you must have secured employment that the college has agreed is suitable.</p>	<ul style="list-style-type: none"> Level 3 Craft Carpentry and Joinery apprenticeship Employment
Architectural Joinery Apprenticeship Level 2 B	<p>A minimum of GCSE English and maths at grade 2 or above.</p> <p>To start your apprenticeship you must have secured employment that the college has agreed is suitable.</p>	<ul style="list-style-type: none"> Level 3 Craft Carpentry and Joinery apprenticeship Employment
Craft Carpentry and Joinery Apprenticeship Level 3 B	<p>A minimum of an appropriate Level 2 qualification, and GCSE English and maths at grade 4 or above.</p> <p>To start your apprenticeship you must have secured employment that the college has agreed is suitable.</p>	<ul style="list-style-type: none"> Employment



Plastering

COURSES	ENTRY REQUIREMENTS	PROGRESSION
Plastering Level 1 B	A minimum of GCSE English and maths grade 2 or above.	<ul style="list-style-type: none"> Plastering Level 2 course Apprenticeship in plastering
Plastering Level 2 B	A minimum of a Level 1 relevant vocational qualification and GCSE English and maths grade 2.	<ul style="list-style-type: none"> Level 3 apprenticeship Employment
Plastering Apprenticeship Level 2 B	<p>GCSE English and maths at grade 2 or above.</p> <p>To start your apprenticeship you must have secured employment that the college has agreed is suitable.</p>	<ul style="list-style-type: none"> Higher level qualification Employment

COURSE LOCATIONS

B Brunel Construction Centre



Plumbing

COURSES	ENTRY REQUIREMENTS	PROGRESSION
Plumbing Level 1 S B	A minimum of GCSE English and maths grade 2 or above.	<ul style="list-style-type: none"> Level 2 Plumbing and Heating Apprenticeship
Plumbing and Heating Level 2 S B	A minimum of GCSE English and maths grade 4 or above, or a Level 1 relevant vocational qualification.	<ul style="list-style-type: none"> Plumbing and Heating apprenticeship Level 3
Plumbing and Heating Apprenticeship Level 3 B	<p>A minimum of grade 4 in GCSE English and maths.</p> <p>To start your apprenticeship you must have secured employment that the college has agreed is suitable.</p>	<ul style="list-style-type: none"> Level 4 qualification Employment

COURSE LOCATIONS

- B Brunel Construction Centre
- S Springfield Sixth Form Centre



Creative Industries

AVERAGE SALARIES

£30,680

Fashion Designers

£42,640

Artists

£36,400

Graphic and Multimedia Designers

According to the West Yorkshire Local Skills Improvement Plan, Creative Industries is one of the largest growing sectors in our region. Whether your interests lie in art and design, music or media, we have a range of vocational courses from Entry Level to Level 3 that will allow you to perfect your craft and become a practitioner in your field.

At Kirklees College, you will benefit from amazing facilities for creative courses, from textile and printmaking facilities at our Pioneer Higher Skills Centre, to brand-new digital music production equipment and multi-media generation facilities at our Huddersfield Centre. All of our Creative Industries courses are hands-on, and you will also benefit from enhanced work experience opportunities to help you prepare for a career in this exciting world.



"I love being able to explore different art and design techniques and using different mediums to create my work."

Rebecca, Level 3 Art and Design Practice

COURSE LOCATIONS

- H** Huddersfield Centre
- P** Pioneer Higher Skills Centre
- S** Springfield Sixth Form Centre

Art and Design

COURSES	ENTRY REQUIREMENTS	PROGRESSION
Vocational Pathways - Pathway to Creative Arts Entry 3 H S	There are no formal entry requirements for this course.	<ul style="list-style-type: none"> After this course, you can progress onto an accredited Level 1 course within the college or employment. Gaining your GCSE in English and maths will support this transition.
Skills for Creative Industries Level 1 H P	A minimum of four GCSEs at grade 2 or above in English and/or maths and an art-based subject.	<ul style="list-style-type: none"> Art and Design Level 2 Creative Media Level 2 Music Level 2 Fashion Level 2
Art and Design Level 2 H P	A minimum of four GCSEs with the following grades: English at 3 or above and maths at 2 or above and two other GCSEs at 3 or above, to include an art and design subject.	<ul style="list-style-type: none"> Art and Design Practice Level 3 Fashion and Textiles Level 3
Fashion Level 2 P	A minimum of four GCSEs with the following grades: English at 3 or above and maths at 2 or above and two other GCSEs at 3 or above, to include an art and design subject.	<ul style="list-style-type: none"> Art and Design Practice Level 3 Fashion and Textiles Level 3
Art and Design Practice Level 3 H P	A minimum of five GCSEs at grade 4 or above including English and maths and a GCSE in an art or a creative subject.	<ul style="list-style-type: none"> Higher Education Employment Art, Design and Media Practice Foundation Diploma Level 3/4
Fashion and Textiles Level 3 P	A minimum of five GCSEs at grade 4 or above including English and maths and a GCSE/Level 2 qualification in fashion or a creative subject.	<ul style="list-style-type: none"> Higher Education Foundation and BA (Hons) degrees in fashion-related subjects Art, Design and Media Practice Foundation Diploma Level 3/4
Art, Design and Media Practice Foundation Diploma Level 3/4 P	A minimum of one A Level or equivalent, plus three GCSE passes at Grade 4 (C), including English and maths, plus a portfolio of your art work.	<ul style="list-style-type: none"> Undergraduate courses in Art and Design



Media

COURSES	ENTRY REQUIREMENTS	PROGRESSION
Skills for Creative Industries Level 1 H P	A minimum of four GCSEs at grade 2 or above in English and/or maths and an art-based subject.	<ul style="list-style-type: none"> Art and Design Level 2 Creative Media Level 2 Music Level 2 Fashion Level 2
Creative Media Level 2 H	A minimum of four GCSEs with the following grades: English at 3 or above and maths at 2 or above and two other GCSEs at 3 or above.	<ul style="list-style-type: none"> Creative Media Practice Level 3
Creative Media Practice Level 3 H	A minimum of five GCSEs with the following grades: English at 4 or above and maths at 3 or above and three other GCSEs at 4 or above.	<ul style="list-style-type: none"> Art, Design and Media Practice Foundation Diploma Level 3/4 Higher Education Employment

COURSE LOCATIONS

- H Huddersfield Centre
- P Pioneer Higher Skills Centre



Music

COURSES	ENTRY REQUIREMENTS	PROGRESSION
Skills for Creative Industries Level 1 H P	A minimum of four GCSEs at grade 2 or above in English and/or maths and an art-based subject.	<ul style="list-style-type: none"> Art and Design Level 2 Creative Media Level 2 Music Level 2 Fashion Level 2
Music Skills Level 2 H	A minimum of four GCSEs with the following grades: English at 3 or above and maths at 2 or above and two other GCSEs at 3 or above.	<ul style="list-style-type: none"> Level 3 Music or related course
Music Level 3 H	A minimum of five GCSEs with the following grades: English at 4 or above and maths at 3 or above and three other GCSEs at 4 or above.	<ul style="list-style-type: none"> University – degrees include: BMus in Music, BA (Hons) in Music Technology and Production and BA (Hons) in Music Performance, Production and Composition Level 4/5 qualification Employment

COURSE LOCATIONS

- H Huddersfield Centre
- P Pioneer Higher Skills Centre



Digital Development & Computing

AVERAGE SALARIES

£59,800

IT Directors

£52,520

Cyber Security Professionals

£43,160

Web Designers

You've grown up in an online world where technology is fundamental to the way we live our lives. From social media and gaming to video and streaming, technology is fundamental to the way we live our lives.

The digital industry is one of the fastest growing sectors in the world and we're investing in providing you with opportunities in the digital sector. Whether your interests lie in coding for gaming, or social media content creation, our range of specialised digital courses can help you make your dream job a reality.



"The teacher support in lessons and the flexibility are my favourite parts of the course. I feel I am getting a good education."

Juvraj, Level 3 Software Development

COURSES	ENTRY REQUIREMENTS	PROGRESSION
Cyber Security Technician Apprenticeship Level 3 H	A minimum of GCSE grade 4 or above in English and maths. To start your apprenticeship, you must have secured employment that the college has agreed is suitable.	<ul style="list-style-type: none"> Level 4 apprenticeship in fields of networks and cybersecurity University Employment
Information Communications Technician Apprenticeship Level 3 H	A minimum of GCSE grade 4 or above in GCSE English, maths and an IT qualification or relevant experience. To start your apprenticeship, you must have secured employment that the college has agreed is suitable.	<ul style="list-style-type: none"> Higher Education qualification in Computing or IT Employment
Multi-Channel Marketer Apprenticeship Level 3 H	A minimum of English and maths at grade 4 or above. To start your apprenticeship, you must have secured employment that the college has agreed is suitable.	<ul style="list-style-type: none"> Level 4 apprenticeship Higher Education Employment

COURSE LOCATIONS

- H Huddersfield Centre
- S Springfield Sixth Form Centre

COURSES	ENTRY REQUIREMENTS	PROGRESSION
Level 1 Vocational Studies: Digital H S	A minimum of four GCSEs with the following grades: English at 2 or above and maths at 1 or above and two other GCSEs at 2 or above.	<ul style="list-style-type: none"> Digital Development and Computing Level 2
Digital Development and Computing Level 2 H S	A minimum of four GCSEs with the following grades: English and maths at 3 or above and two other GCSEs at 3 or above.	<ul style="list-style-type: none"> Software Development Level 3
Content Creation for Esports Level 2 H	A minimum of four GCSEs at grade 3 or above to include English and maths.	<ul style="list-style-type: none"> Level 3 Content Creation for Esports or related course
Games Development Level 2 H	A minimum of four GCSEs at grade 3 or above to include English and maths.	<ul style="list-style-type: none"> Games Development Level 3
Software Development Level 3 S	A minimum of five GCSEs at grade 4 or above, including English and maths and a Media or Art and Design subject.	<ul style="list-style-type: none"> Higher Education Degree in Software Development
Content Creation for Esports Level 3 H	A minimum of five GCSEs at grade 4 or above, including English and maths.	<ul style="list-style-type: none"> Higher education Higher apprenticeship Employment
Networking and Infrastructure Level 3 S	A minimum of five GCSEs at grade 4 or above, including English and Maths and a Media or Art and Design subject.	<ul style="list-style-type: none"> Higher Education Degree in IT / Related Fields
Games Development Level 3 H	A minimum of five GCSEs at grade 4 or above to include English and maths.	<ul style="list-style-type: none"> Higher Education Apprenticeship Employment
Web Development Level 3 H	A minimum of five GCSEs at grade 4 or above to include English and maths.	<ul style="list-style-type: none"> Higher Education Degree in Web Development
T Level Digital Software Development Level 3 H	A minimum of GCSE English at grade 5 or above, and four other GCSEs grade 4 or above to include maths.	<ul style="list-style-type: none"> Higher Education Employment

A woman wearing a black hijab and a pink sweatshirt with 'LOS ANGELES CALIFORNIA' printed on it is holding a baby. They are in a brightly lit nursery with colorful toys and a window in the background.

Education & Early Years

AVERAGE SALARIES

£30,680

Nursery Education Teaching
Professionals

£61,880

Early Education and Childcare
Services Proprietors

£41,080

Primary School Teachers

A career in the Education and Early Years sector is unique and rewarding. Working in the sector will make a big difference to helping children get the best start in life and shaping their future. There are many areas of the profession you can work in, including a nursery, pre-school and schools in jobs such as a childminder, nursery nurse or primary school teacher.

We teach Education and Early Years courses across our Huddersfield and Dewsbury centres, with mock nurseries at our Huddersfield and Pioneer Higher Skills Centre so you can train in a real-life environment. There's also work experience opportunities to further enhance your professional skills outside of college.



"I can speak to my tutors about anything, they are always supportive. My favourite part is the activities we do on the course."

Bintou, Level 2 Certificate in Working with Children in Early Years and Primary Settings

COURSES	ENTRY REQUIREMENTS	PROGRESSION
Early Years Practitioner Apprenticeship Level 2 H	A minimum of grade 3 and above in English Language and three other GCSEs at grade 3 and above. You can be 16 years old to apply for this apprenticeship but it is at the discretion of the employer whether they are willing to hire a 16-year-old apprentice. To start your apprenticeship you must have secured employment that the college has agreed is suitable.	<ul style="list-style-type: none"> T Level in Education and Childcare Foundation degree in Early Years Education Full-time employment
Early Years Educator Apprenticeship Level 3 H	A minimum of Level 2 or grade 4 and above in five subjects, which must include maths and English. You can be 16 years old to apply for this apprenticeship but it is at the discretion of the employer whether they are willing to hire a 16-year-old apprentice. To start your apprenticeship you must have secured employment that the college has agreed is suitable.	<ul style="list-style-type: none"> Foundation degree in Early Years Education Higher Education Full-time employment

COURSE LOCATIONS

- H Huddersfield Centre
- S Springfield Sixth Form Centre
- P Pioneer Higher Skills Centre

COURSES	ENTRY REQUIREMENTS	PROGRESSION
Vocational Pathways - Pathway to Care Entry 3 H S	There are no formal entry requirements for this course.	<ul style="list-style-type: none"> Activities on this course will be practical and will support any move onto a Level 1 course in this field the following year. Gaining a GCSE in English and maths will also support your progression.
Caring for Children Level 1 H S	A minimum of four GCSEs with the following grades: English at 2 or above and maths at 1 or above and two other GCSEs at 2 or above. You will also need to have a DBS check.	<ul style="list-style-type: none"> Level 2 Certificate in Working with Children in Early Years and Primary Settings
Certificate in Working with Children in Early Years and Primary Settings Level 2 H S	A minimum of four GCSEs with the following grades: English at 3 or above and maths at 2 or above and two other GCSEs at 3 or above. You will also need to have a DBS check.	<ul style="list-style-type: none"> Apprenticeship T Level Education and Childcare
Foundation Year T Level - Early Years Practitioner Level 2 H S	A minimum of four GCSEs with the following: English at 3 or above and maths at 3 or above and two other GCSEs at 3 or above. You will also need a DBS check.	<ul style="list-style-type: none"> T Level Education and Childcare: Early Years Educator Apprenticeship
T Level Education and Childcare: Early Years Educator H P	A minimum of five GCSEs at grade 4 or above, including English Language and maths. You will also need to have a fully enhanced DBS check.	<ul style="list-style-type: none"> Foundation Degree Higher Education
Foundation Year T Level - T Level in Education and Childcare: Teaching Assistant Level 2 H	A minimum of four GCSEs with the following grades: English at 3 or above and maths at 3 or above and two other GCSEs at 3 or above. You will also need a DBS check.	<ul style="list-style-type: none"> T Level Education and Childcare: Teaching Assistant
T Level Education and Childcare: Teaching Assistant H	A minimum of five GCSEs at grade 4 or above, including English Language and maths. You will also need to have a fully enhanced DBS check.	<ul style="list-style-type: none"> Foundation Degree Higher Education



Engineering

AVERAGE SALARIES

£54,080

Electrical Engineers

£48,880

Civil Engineers

£42,640

Engineering Technicians

Engineering is everywhere! It already plays a leading role in the products we use daily and the environments in which we live. The foundations of engineering underpin the very fabric of society, from the transport we use, to the buildings we live and work in. If you want to help create the technology and equipment that everyone relies on, every day, then a career in engineering is for you.

Our Engineering Centre is a world-class facility with state-of-the-art equipment for a whole range of Engineering disciplines, including Fabrication and Welding, CAD, CAM, Machining and more. Last year, we secured a share of £6.9million from government funding for new digital equipment at our Engineering Centre, including new 3D printers, automation kit, a robotic arm and VR headsets.



"I enjoy being in the workshop. The support from pastoral mentors is great."

Emeka, T Level Engineering and Manufacturing

COURSE LOCATIONS

E Engineering Centre

COURSES	ENTRY REQUIREMENTS	PROGRESSION
Engineering and Manufacturing Level 1 E	A minimum of four GCSEs with the following grades: English at 2 or above and maths at 2 or above and two other GCSEs at 2 or above ideally including a science or technology course.	<ul style="list-style-type: none"> Engineering and Manufacturing Level 2
Engineering and Manufacturing Level 2 E	A minimum of four GCSEs with the following grades: English at 3 or above and maths at 3 or above and two other GCSEs at 3 or above including a science or technology course.	<ul style="list-style-type: none"> Level 3 course in Engineering and Manufacturing Level 3 Engineering apprenticeships T Level Engineering and Manufacturing: Manufacturing, Processing and Control
Fabrication and Welding Programme Level 2 E	A minimum of grade 3 in maths and English.	<ul style="list-style-type: none"> Level 3 Metal Fabricator apprenticeship Level 3 course in Engineering and Manufacturing Level 3 Engineering apprenticeships
Engineering and Manufacturing Level 3 E	A minimum of five GCSEs with the following grades: English at 4 or above and maths at 5 or above and three other GCSEs at 4 or above including a science or technology course.	<ul style="list-style-type: none"> Higher education Apprenticeship Employment
T Level Foundation Year Engineering Level 2 E	A minimum of four GCSEs with the following grades: English at 3 or above and maths at 3 or above and two other GCSEs at 3 or above including a science or technology course.	<ul style="list-style-type: none"> T Level Engineering and Manufacturing: Manufacturing, Processing and Control Engineering and Manufacturing Level 3
T Level Engineering and Manufacturing: Manufacturing, Processing and Control E	A minimum of five GCSEs with the following grades: English at 4 or above and maths at 5 or above and three other GCSEs at 4 or above including a science or technology course.	<ul style="list-style-type: none"> HNC/HND Apprenticeship Degree

COURSES	ENTRY REQUIREMENTS	PROGRESSION
Metal Fabricator Apprenticeship Level 3 E	<p>A minimum of grade 4 or above in GCSE English, maths and a science or technology subject. If you have already gained employment, we will do a Century maths and English initial assessment to assess your suitability.</p> <p>To start your apprenticeship you must have secured employment that the college has agreed is suitable.</p>	<ul style="list-style-type: none"> • Employment
Engineering Technician (Mechatronics Maintenance) Apprenticeship Level 3 E	<p>A minimum of grade 4 or above in GCSE English, maths and a science or technology subject.</p> <p>To start your apprenticeship you must have secured employment that the college has agreed is suitable.</p>	<ul style="list-style-type: none"> • Higher level apprenticeship/ HNC • Degree level qualification • Full-time employment
Machining Technician Apprenticeship Level 3 E	<p>A minimum of grade 4 or above in GCSE English, maths and a science or technology subject.</p> <p>To start your apprenticeship you must have secured employment that the college has agreed is suitable.</p>	<ul style="list-style-type: none"> • Higher level apprenticeship/ HNC • Degree level qualification • Full-time employment
Engineering Fitter Apprenticeship Level 3 E	<p>A minimum of grade 4 or above in GCSE English, maths and a science or technology subject.</p> <p>To start your apprenticeship you must have secured employment that the college has agreed is suitable.</p>	<ul style="list-style-type: none"> • Higher level apprenticeship/ HNC • Degree level qualification • Full-time employment
Engineering Technician (Technical Support) Apprenticeship Level 3 E	<p>A minimum of grade 4 or above in GCSE English, maths and a science or technology subject.</p> <p>To start your apprenticeship you must have secured employment that the college has agreed is suitable.</p>	<ul style="list-style-type: none"> • Higher level apprenticeship/ HNC • Degree level qualification • Employment

COURSE LOCATIONS

E Engineering Centre



ESOL

English for Speakers of other languages



A good grasp of the English language is important for all our futures. As a second language, it will help improve your communication skills, job opportunities and helps you play an active role in society.

English for Speakers of Other Languages (ESOL) courses are designed for students who do not speak English as a first language. From Entry Level upwards, we focus on improving your English listening, speaking, reading, writing and grammar with the opportunity to gain a nationally recognised qualification.



“My favourite part of the course was that I got to meet many new people and made really good friends. I would recommend Kirklees College because the facilities are excellent and the tutors are friendly and kind.”

Ishfaq, ESOL

COURSES	ENTRY REQUIREMENTS	PROGRESSION
English For Speakers of Other Languages (ESOL) H P	This course is for young people aged 16 – 18. There are no formal entry requirements for this course. You will take part in an interview including an initial assessment prior to being enrolled on the right level of course.	<ul style="list-style-type: none"> Vocational course once you have gained Entry Level 3 Functional Skills

COURSE LOCATIONS

- H Huddersfield Centre
- P Pioneer Higher Skills Centre

A young woman with curly brown hair, wearing a black zip-up top, is smiling and holding a black hair dryer. She is standing in a modern hair salon with large mirrors and shelves of products in the background.

Hair, Beauty & Barbering

AVERAGE SALARIES

£19,240

Beauticians

£20,800

Hairdressers and Barbers

The Hair, Beauty and Barbering industry is highly creative and continues to grow and evolve. If you love to express yourself through personal styling, hair, makeup and beauty treatments, starting your career with a vocational course at Kirklees College is the perfect place to start.

With a range of Level 1 – 3 courses available in Dewsbury and Huddersfield, you will train in one of our public salons at our Huddersfield Centre or Pioneer Higher Skills Centre. Both salons are fully equipped with hair, barbering, makeup and spa equipment and tools that are used in industry. All of our tutors are industry experienced also, and many still work part-time as barbers, hairdressers and beauticians, so you will be learning from the experts.



"My favourite part of the course is being creative and using my imagination to create my work."

Isabel, Level 3 Theatrical, Special Effects, Hair and Media Make-Up

COURSE LOCATIONS

- H** Huddersfield Centre
- P** Pioneer Higher Skills Centre

Hair and Beauty

COURSES	ENTRY REQUIREMENTS	PROGRESSION
Vocational Pathways - Pathway to Hair and Beauty Entry 3 H	There are no formal entry requirements for this course.	<ul style="list-style-type: none"> This practical learning will support students wishing to progress onto the Level 1 course in this field the following year.
Hair and Beauty Level 1 P	A minimum of GCSE English and maths grade 1 or above. It is also expected that students complete their current course of study to the best of their ability and maintain a positive approach to continuing their studies.	<ul style="list-style-type: none"> Level 2 Hairdressing Level 2 Beauty Level 2 Media Make-up
Hair and Media Make-Up Level 2 H P	A minimum of GCSE English and maths grade 2 or above.	<ul style="list-style-type: none"> Level 3 Make-up Artistry Level 3 Theatrical, Special Effects, Hair and Media Make-up
Theatrical, Special Effects, Hair and Media Make-Up Level 3 H	A minimum of GCSE English and maths grade 3 in either and a Level 2 relevant vocational qualification.	<ul style="list-style-type: none"> Higher Skills course Employment within the theatre or television industry as a make-up professional

Beauty

COURSES	ENTRY REQUIREMENTS	PROGRESSION
Beauty Level 1 H	A minimum of GCSE English and maths grade 1 or above. It is also expected that students complete their current course of study to the best of their ability and maintain a positive approach to continuing their studies.	<ul style="list-style-type: none"> Level 1 Hairdressing Level 2 Beauty Therapy Level 2 Media Make-up
Beauty Therapy Level 2 H P	A minimum of GCSE English and maths grade 3 or above.	<ul style="list-style-type: none"> Level 3 Beauty Level 3 Make-Up Artistry Apprenticeship
Beauty Therapy General Route Level 3 H	A minimum of GCSE English and maths grade 3 or above in either and a Level 2 relevant vocational qualification.	<ul style="list-style-type: none"> Level 4 Beauty Therapy Employment in salons, spas, cruise ships, your own business Higher Education
Makeup Artistry Level 3 H	A minimum of GCSE English and maths grade 3 or above in either and a Level 2 relevant vocational qualification.	<ul style="list-style-type: none"> Employment as a make-up professional
Media Makeup Level 3 P	A minimum of GCSE English and maths grade 3 or above in either and a Level 2 relevant vocational qualification.	<ul style="list-style-type: none"> Employment as a make-up professional
Beauty Therapy Massage Treatment Route Level 3 P	A minimum of GCSE English and maths grade 3 or above in either and a Level 2 relevant vocational qualification.	<ul style="list-style-type: none"> Level 4 Beauty Therapy Employment in salons, spas, cruise ships, your own business
Beauty Apprenticeship Level 2 H	<p>A minimum of GCSE English and maths grade 2 or above.</p> <p>To start your apprenticeship you must have secured employment that the college has agreed is suitable</p>	<ul style="list-style-type: none"> Full-time role in a salon Beauty Therapy Level 3

Hairdressing

COURSES	ENTRY REQUIREMENTS	PROGRESSION
Hairdressing Level 1 H P	A minimum of GCSE English and maths grade 2/3 or above. It is also expected that students complete their current course of study to the best of their ability and maintain a positive approach to continuing their studies.	<ul style="list-style-type: none"> Level 2 Hairdressing Level 2 Barbering Apprenticeship
Hairdressing Level 2 H P	A minimum of maths and / or English at grade 4 and above.	<ul style="list-style-type: none"> Hairdressing Level 3 Employment or self-employment Apprenticeship
Women's Hairdressing Level 3 H P	A minimum of maths and / or English at grade 4 and above and a Level 2 relevant qualification.	<ul style="list-style-type: none"> Level 4 qualifications Specialist industry training Employment in salons, including managerial roles
Hair Professionals (Hairdressing) Apprenticeship Level 2 H	<p>A minimum of GCSE English and maths grade 2 or above.</p> <p>To start your apprenticeship you must have secured employment that the college has agreed is suitable.</p>	<ul style="list-style-type: none"> Level 3 Women's Hairdressing Employment

COURSE LOCATIONS

- H Huddersfield Centre
- P Pioneer Higher Skills Centre

Barbering

COURSES	ENTRY REQUIREMENTS	PROGRESSION
Barbering Level 2 H P	A minimum of GCSE English and maths grade 2 or above.	<ul style="list-style-type: none"> Level 3 Barbering Apprenticeship Employment/self-employment
Level 2 Certificate in Barbering - VTCT H	A minimum of GCSE grade 2/3 in English and maths.	<ul style="list-style-type: none"> Level 3 Barbering Apprenticeship
Barbering Level 3 H P	A minimum of maths and / or English at grade 3 and above and a Level 2 relevant vocational qualification.	<ul style="list-style-type: none"> Employment/self-employment
Hair Professionals (Barbering) Apprenticeship Level 2 H	<p>A minimum of GCSE English and maths grade 2 or above.</p> <p>To start your apprenticeship you must have secured employment that the college has agreed is suitable.</p>	<ul style="list-style-type: none"> Level 3 Barbering apprenticeship Level 3 Barbering Employment

COURSE LOCATIONS

- H** Huddersfield Centre
- P** Pioneer Higher Skills Centre





Health & Social Care

AVERAGE SALARIES

£25,480

Senior Care Workers

£40,560

Registered Nurse Practitioners

£45,760

Mental Health Nurses

The Health and Social Care sector is the biggest sector in West Yorkshire, employing over 160,000 people in the region*. At Kirklees College, we offer Health and Social Care courses at Levels 1 – 3, providing you with hands-on work experience, and a blend of practical and theoretical learning to prepare you for a career in this essential industry.

Our specialist facilities include our mock hospital ward at our Huddersfield Centre, which has state-of-the-art hospital beds, training manikins which mimic the real symptoms of a human patient, and a range of real healthcare tools to practice nursing duties with. If you choose to apply for a T Level course with us, you will use this unique facility to put theory into practice.

* West Yorkshire Local Skills Improvement Plan



"My tutors are helpful, supportive and friendly. They are always helping me achieve my goals and aspirations."

Bailey, Level 3 Health and Social Care

COURSE LOCATIONS

- H** Huddersfield Centre
- S** Springfield Sixth Form Centre
- P** Pioneer Higher Skills Centre

COURSES	ENTRY REQUIREMENTS	PROGRESSION
Vocational Pathways - Pathway to Care Entry 3 H S	There are no formal entry requirements for this course.	<ul style="list-style-type: none"> Activities on this course will be practical and will support any move onto a Level 1 course in this field the following year. Gaining a GCSE in English and maths will also support your progression.
Introduction to Health and Social Care and Children and Young People's Settings Level 1 H S	A minimum of four GCSEs with the following grades: English at 2 or above and maths at 1 or above and two other GCSEs at 2 or above. A DBS check is also required.	<ul style="list-style-type: none"> Certificate in Working with Children in Early Years and Primary Settings Level 2
Health and Social Care (BTEC) Level 2 H S	A minimum of four GCSEs with the following grades: English at 3 or above and maths at 2 or above and two other GCSEs at 3 or above. A DBS check is also required.	<ul style="list-style-type: none"> Health and Social Care Level 3 Health T Level Apprenticeship Employment
Health and Social Care (NCFE CACHE) Level 2 S	A minimum of four GCSEs with the following grades: English at 3 or above and maths at 2 or above and two other GCSEs at 3 or above. A DBS check is also required.	<ul style="list-style-type: none"> Health and Social Care Level 3 Health T Level Apprenticeship Employment
Health and Social Care Level 3 H P	A minimum of five GCSEs with the following grades: English at 4 or above and maths at 3 or above and three other GCSEs at 4 or above OR a level 2 qualification at overall merit grade and GCSE English at grade 4 and above and maths at grade 3 or above, or equivalent. A DBS check is also required.	<ul style="list-style-type: none"> Degree level course Apprenticeship Employment

COURSES	ENTRY REQUIREMENTS	PROGRESSION
T Level Foundation Year Health Level 2 H	A minimum of four GCSEs with the following grades: English at 3 or above and maths at 2 or above and two other GCSEs at 3 or above. A DBS check is also required.	<ul style="list-style-type: none"> T Level Health: Supporting the Adult Nursing Team T Level Health: Supporting the Mental Health Nursing Team
T Level Health - Supporting the Adult Nursing Team H	A minimum of grade 5 in English, maths or science in addition to four grade 4s. You must have English, maths and science as part of this combination, and one of these subjects must be at grade 5. You will also need to have a DBS check.	<ul style="list-style-type: none"> Higher education Apprenticeship Employment
T Level Health: Supporting the Mental Health Nursing Team H	A grade 5 in English, maths or science in addition to four grade 4s. You must have English, maths and science as part of this combination, and one of these subjects must be at grade 5. You will also need to have a DBS check.	<ul style="list-style-type: none"> Higher education Apprenticeship Employment

COURSE LOCATIONS

H Huddersfield Centre





Hospitality & Catering

AVERAGE SALARIES

£29,640

Restaurant Managers

£28,080

Chefs

£24,960

Bakers

Food, drink and hospitality is a global industry with endless opportunities. Whether your passion lies in the kitchen or front of house, you can learn how to turn that passion into a trade at Kirklees College.

With courses covering a range of culinary specialities and roles, you can dive straight into a course that interests you most. All courses are vocational and focus on making you ready for work, and as a student at Kirklees College, you will contribute to the running of our public restaurant, café and deli, Landings 72, at our Huddersfield Centre.



"I enjoy working with my friends and working as a team, being creative and finding out new things about the culinary world."

Jacob, Level 2 Professional Cookery

COURSE LOCATIONS

H Huddersfield Centre

COURSES	ENTRY REQUIREMENTS	PROGRESSION
Introduction To Culinary Skills Level 1 H	A minimum of four GCSEs with the following grades: English at 2 or above and maths at 2 or above and two other GCSEs at 2 or above.	<ul style="list-style-type: none"> Professional Cookery NVQ Level 2 Professional Patisserie, Confectionary and Cafe Culture Level 2 Apprenticeship
Professional Patisserie, Confectionary and Cafe Culture Level 2 H	A minimum of four GCSEs with the following grades: English and maths at 4 or above and two other GCSEs at 4 or above, or a Level 1 relevant vocational qualification.	<ul style="list-style-type: none"> Professional Patisserie and Confectionery Level 3 Apprenticeship
Professional Cookery NVQ Level 2 H	A minimum of a relevant Level 1 qualification and GCSE English and maths grade 4 or above.	<ul style="list-style-type: none"> Professional Cookery NVQ Level 3 Employment within the catering industry in a variety of settings
Professional Cookery NVQ Level 3 H	A minimum of GCSE English and maths grade 4 or above and a Level 2 relevant vocational qualification.	<ul style="list-style-type: none"> Level 4 qualification Employment
Professional Patisserie and Confectionary Level 3 H	A minimum of a Level 2 Patisserie qualification or relevant industry experience and GCSE English and maths at grade 4.	<ul style="list-style-type: none"> Level 3 or 4 apprenticeship Employment
Commis Chef Apprenticeship Level 2 H	<p>A minimum of GCSE English and maths at grade 3 or above.</p> <p>To start your apprenticeship you must have secured employment that the college has agreed is suitable.</p>	<ul style="list-style-type: none"> Level 3 Apprenticeship Chef De Partie Employment
Production Chef Apprenticeship Level 2 H	<p>A minimum of GCSE English and maths at grade 3 or above.</p> <p>To start your apprenticeship you must have secured employment that the college has agreed is suitable.</p>	<ul style="list-style-type: none"> Employment

COURSES	ENTRY REQUIREMENTS	PROGRESSION
Hospitality Team Member Apprenticeship Level 2 H	<p>A minimum of GCSE English and maths at grade 3 or above.</p> <p>To start your apprenticeship you must have secured employment that the college has agreed is suitable.</p>	<ul style="list-style-type: none"> • Employment
Chef De Partie Apprenticeship Level 3 H	<p>A minimum of a relevant level 2 qualification and GCSE English and maths at grade 4 or above.</p> <p>To start your apprenticeship you must have secured employment that the college has agreed is suitable.</p>	<ul style="list-style-type: none"> • Hospitality Kitchen Management course • Employment

COURSE LOCATIONS

H Huddersfield Centre





Motor Vehicle

AVERAGE SALARIES

£41,600

Garage Managers and Proprietors

£31,200

Plant and Machine Operatives

£31,720

Vehicle Technicians,
Mechanics and Electricians

With the UK and wider world moving towards more sustainable car models, Kirklees College has invested heavily in our Hybrid Electric Vehicle Centre at our Engineering Centre in Huddersfield. Here, alongside other state-of-the-art equipment for light and heavy vehicle maintenance, you will find a range of model EV cars, rigs and equipment that will bring your learning of motor vehicles up to speed with this evolving industry.

If you are joining the department at our Springfield Sixth Form Centre, you will also learn in a fully-functioning motor vehicle workshop, and your course will include work experience and work-based activities, such as visits from local businesses to enhance your practical learning.



"My favourite part of the course is the workshops and I would rate the facilities 10/10."

Robert, Level 2 in Light Vehicle Maintenance and Repair Principles

COURSE LOCATIONS

- E** Engineering Centre
- S** Springfield Sixth Form Centre

COURSES	ENTRY REQUIREMENTS	PROGRESSION
Motor Vehicle Entry 3 E S	There are no formal entry requirements for this course.	<ul style="list-style-type: none"> Level 1 programme within the Motor Vehicle department, or another college course of your choosing.
Motor Vehicle Level 1 E S	A minimum of a grade 2 in English and maths GCSE, and/or an Entry 3 Motor Vehicle qualification.	<ul style="list-style-type: none"> Motor Vehicle Level 2 Apprenticeship
Light Vehicle and Maintenance and Repair Principles Level 2 E	A minimum of GCSE English and maths at grade 4 or above.	<ul style="list-style-type: none"> Motor Vehicle apprenticeship Light Vehicle Maintenance and Repair Principles Level 3
Diploma in Vehicle Maintenance Level 3 E	A minimum of GCSE English and maths grade 4 or above and a relevant Level 2 qualification.	<ul style="list-style-type: none"> Level 4 apprenticeship Higher Education Employment
Construction Plant Maintenance Level 3 E	A minimum of GCSE English and maths grade 4 or above. This course also requires a Motor Vehicle Level 2 qualification.	<ul style="list-style-type: none"> Level 4 apprenticeship Employment
Light Vehicle Service and Maintenance Technician Apprenticeship Level 3 E	<p>A minimum of GCSE English and maths grade 4 or above.</p> <p>To start your apprenticeship you must have secured employment that the college has agreed is suitable.</p>	<ul style="list-style-type: none"> Level 4 and work towards becoming an Automotive Master Technician Employment
Heavy Vehicle Service and Maintenance Technician Apprenticeship Level 3 E	<p>A minimum of GCSE English and maths grade 4 or above.</p> <p>To start your apprenticeship you must have secured employment that the college has agreed is suitable.</p>	<ul style="list-style-type: none"> Level 4 and work towards becoming an Automotive Master Technician Employment



Process Manufacturing

AVERAGE SALARIES

£45,240

Production and Process Engineers

£50,440

Production Managers

£36,920

Planning, Process and
Production Technicians

Manufacturing is currently enjoying an increased interest as a career choice, and for good reason too! With plenty of pathways available to those who train in Process Manufacturing, getting started in this innovative, creative field is a great idea.

Kirklees College prides itself on being an innovator of the field too, being the first college in England to offer a Level 3 Supply Chain Apprenticeship. All our students are also taught in our state-of-the-art Process Manufacturing Centre (PMC) and learn from industry experts.



“The college has very good facilities at the Process Manufacturing Centre. I enjoy the practical lessons like welding and machining.”

Rikki, Level 3 Food and Drink Maintenance Engineer Apprenticeship

COURSE LOCATIONS

PM Process Manufacturing Centre

E Engineering Centre

COURSES	ENTRY REQUIREMENTS	PROGRESSION
Supply Chain Warehouse Operator Apprenticeship Level 2 PM	A minimum of GCSE English and maths grade 3. To start your apprenticeship you must have secured employment the college has agreed is suitable.	<ul style="list-style-type: none"> Higher level apprenticeship Employment
Food and Drink Maintenance Engineer Apprenticeship Level 3 PM	A minimum of GCSE English and maths grade 4 or above. To start your apprenticeship you must have secured employment that the college has agreed is suitable.	<ul style="list-style-type: none"> Further study within the food and drink industry Employment
Supply Chain Practitioner Apprenticeship Level 3 PM	A minimum of GCSE English and maths grade 4 or above. To start your apprenticeship you must have secured employment that the college has agreed is suitable.	<ul style="list-style-type: none"> Management or specialist roles
Food and Drink Technical Operator Apprenticeship Level 3 E	You will need a Level 2 apprenticeship or related qualification, and maths and English GCSE at grade 4/C. To start your apprenticeship you must have secured employment that the college has agreed is suitable.	<ul style="list-style-type: none"> Employment



Science

AVERAGE SALARIES

£40,040

Pharmacists

£39,520

Biological Scientists

£28,080

Laboratory Technicians

Today's society benefits from so many scientific innovations, including medicines and treatment, technologies, food and the environment. The demand for discovery is constant as we work globally to create a sustainable world with a planet and population that is fit for the future.

When you do a Science course at Kirklees College, you benefit from spending your time in our multi-purpose laboratories with amazing equipment.



"My tutors have been really helpful and supportive and they have helped me plan my next steps. When I leave college I hope to apply for university or an apprenticeship."

Maryum, Level 3 Forensics and Criminal Investigations

COURSE LOCATIONS

H Huddersfield Centre

COURSES	ENTRY REQUIREMENTS	PROGRESSION
Applied Science Level 1 H	A minimum of four GCSEs with the following grades: English at 2 or above and maths at 1 or above and two other GCSEs at 2 or above including a science subject.	<ul style="list-style-type: none"> Applied Science Level 2 Health and Social Care course
Applied Science Level 2 H	A minimum of four GCSEs with the following grades: English and maths at grade 3 or above and two other GCSEs at 3 or above including a science subject.	<ul style="list-style-type: none"> Laboratory Technician apprenticeship Level 3 Science T Level - Laboratory Sciences Other Level 3 course
Applied Science Level 3 H	A minimum of five GCSEs with the following grades: English and maths at 4 or above and three other GCSEs at 4 or above including a science subject.	<ul style="list-style-type: none"> Higher Education including degrees in pharmacy, audiology, optometry, chemistry and forensics Apprenticeship Employment
Forensic and Criminal Investigations Level 3 H	A minimum of five GCSEs with the following grades: English and maths at 4 or above and three other GCSEs at 4 or above including a science subject.	<ul style="list-style-type: none"> Higher Education including degrees in forensic science, criminology, psychology, forensic fire investigation Apprenticeship Employment
Biomedical Science Level 3 H	A minimum of five GCSEs with the following grades: English and maths at 4 or above and three other GCSEs at 4 or above including a science subject.	<ul style="list-style-type: none"> Higher Education including degrees in paramedic science, biomedical science, biology, operating departments practitioner and health sciences Apprenticeship Employment
T Level Science - Laboratory Sciences Level 3 H	A minimum of four GCSEs grade 4 or above. You must have English, maths and a science subject as part of this combination.	<ul style="list-style-type: none"> Higher Education Employment Degree apprenticeship
Laboratory Technician Apprenticeship Level 3 H	<p>A minimum of five GCSEs with the following grades: English and maths at 4 or above and three other GCSEs at 4 or above including a science subject.</p> <p>To start your apprenticeship you must have secured employment that the college has agreed is suitable.</p>	<ul style="list-style-type: none"> Employment in the science industry Higher level apprenticeship

Skills for Work & Life

Our Skills for Work and Life courses are designed to help support people wanting to improve their life skills for work and everyday living. Delivered in a safe, supportive and nurturing environment, our committed team offers specialist support to each student based upon their individual needs.

We have a range of facilities at our Huddersfield Centre and Springfield Sixth Form Centre in Dewsbury. These include specialist classrooms, social areas, regulation spaces, community gardens and kitchens. We also have independent living spaces to help students learn the skills they need to live with greater independence.

Students are able to follow pathways for their studies: Pathway to Independence, Pathway to Employment or Pathway to Vocational Curriculum. Each pathway contains a range of programmes that build on the skills they have learnt.



"I enjoy everything about college, like my teachers and my friends. Everyone makes me feel happy and welcomed. My lessons help me with writing, drawing, cooking and work skills and I have fun in my lessons."

Leoni-May, Preparation for Semi-Supported Living

COURSE LOCATIONS

- H** Huddersfield Centre
- S** Springfield Sixth Form Centre

COURSES	ENTRY REQUIREMENTS	PROGRESSION
Preparation for Community Access H S	There are no formal entry requirements. You will take part in an interview to see if the course is right for you and to see if you have any additional support needs.	<ul style="list-style-type: none"> This course has been designed as an entry level to the Pathway to Independence. Students may progress within the Pathways model that matches their current progress against the preparation for adulthood framework, their EHCP outcomes and their aspirations for the future.
Preparation for Semi-Supported Living H S	There are no formal entry requirements. You will take part in an interview to see if the course is right for you and to see if you have any additional support needs.	<ul style="list-style-type: none"> This course has been designed as a middle entry point or progression route on the Pathway to Independence. Students may progress within the Pathways model that matches their current progress against the preparation for adulthood framework, their EHCP outcomes and their aspirations for the future.
Preparation for Independent Living H S	There are no formal entry requirements. You will take part in an interview to see if the course is right for you and to see if you have any additional support needs.	<ul style="list-style-type: none"> This course has been designed as the end entry point or progression route on the Pathway to Independence. Students may progress onto external provision or the employment pathway depending upon their EHCP outcomes and their aspirations for the future.
Work Related Skills H S	There are no formal entry requirements. You will take part in an interview to see if the course is right for you and to see if you have any additional support needs.	<ul style="list-style-type: none"> This course has been designed as an entry level to the Pathway to Employment. Students may progress within the Pathways model that matches their current progress against the preparation for adulthood framework, their EHCP outcomes and their aspirations for the future.



COURSE LOCATIONS

- H** Huddersfield Centre
- S** Springfield Sixth Form Centre

COURSES	ENTRY REQUIREMENTS	PROGRESSION
Award in Progression Entry 3 H	There are no formal entry requirements for this course. You will take part in an interview to see if the course is right for you and to see if you have any additional support needs.	<ul style="list-style-type: none"> Works Skills Level 1 or other related course
Work Skills Level 1 H S	You will take part in an interview to see if the course is right for you and to see if you have any additional support needs. You will need to be working at Entry Level 3 or above in English.	<ul style="list-style-type: none"> A Level 1 course, vocational course in a variety of areas at Level 1 or 2, apprenticeship or employment.
Preparation For Supported Internship Level 1 H S	There are no formal entry requirements. You will take part in an interview to see if you have a demonstrable desire to work and to see if you have any additional support needs.	<ul style="list-style-type: none"> Progression onto a supported internship, part-time or full-time paid employment or voluntary work. This course has been designed as a middle entry point or progression route on the Pathway to Employment.
Supported Internship H S	There are no formal entry requirements. You will take part in an interview to see if the course is right for you and to see if you have any additional support needs.	<ul style="list-style-type: none"> This course will prepare you to secure full-time, part-time or voluntary work.
Project SEARCH Supported Internship H S	There are no formal entry requirements. You will take part in an interview to see if the course is right for you and to see if you have any additional support needs.	<ul style="list-style-type: none"> This is the final stage of the employment pathway and students will be supported to find employment of 16 hours or more.



Sport & Fitness

AVERAGE SALARIES

£37,960

Leisure and Sports Managers
and Proprietors

£36,920

Sport Coaches, Instructors and
Officials

£31,200

Fitness and Wellbeing
Instructors

The Sport industry offers a diverse range of careers and Kirklees College's course offer aims to reflect this. Whether you want to train to be a competitive athlete, gym instructor, personal trainer, nutritionist, or gain a broad knowledge of sport and physical education, our courses are a great way to turn your sporting achievements into a valuable career.

All Sports students at Kirklees College are part of our wider Sports Academy and you will become part of the family with your own uniform and identity relating to your course. With an on-site gym and access to specialist outdoor training grounds, there's never a dull moment when you join the KC Sports department.



"There are great opportunities and great staff at the college. All my tutors are really supportive, kind and helpful."

Brooke, Level 3 Sport, Health and Physical Activity

COURSE LOCATIONS

H Huddersfield Centre

COURSES	ENTRY REQUIREMENTS	PROGRESSION
Sport Level 1 H	A minimum of four GCSEs with the following grades: English at grade 2 or above maths at grade 1 or above and two other GCSEs at grade 2 or above.	<ul style="list-style-type: none"> Sport Leadership and Coaching Level 2 Gym Instruction Level 2
Sport Leadership and Coaching Level 2 H	A minimum of four GCSEs with the following grades: English at 3 or above and maths at 2 or above and two other GCSEs at 3 or above including PE or a sports background and interest.	<ul style="list-style-type: none"> Gym Instruction Certificate Level 2 Sport, Health and Physical Activity - Sport Performance Level 3 Other Level 3 course
Gym Instruction Certificate Level 2 H	A minimum of five GCSEs with the following grades: English at 4 or above and maths at 3 or above and three other GCSEs at 4 or above. Candidates need to have a basic understanding of how the human body functions and have experience using the gym.	<ul style="list-style-type: none"> Personal Trainer Diploma Level 3
Sport Coaching and Physical Activity Introductory Certificate (Football Academy) Level 3 H	A minimum of five GCSEs with the following grades: English at 4 or above and maths at 3 or above and three other GCSEs at 4 or above including PE or a sports background.	<ul style="list-style-type: none"> Higher Education Employment in the industry
Sport, Health and Physical Activity - Sport Performance Level 3 H	A minimum of five GCSEs with the following grades: English at 4 or above and maths at 4 or above and three other GCSEs at 4 or above including PE and science.	<ul style="list-style-type: none"> Higher Education Employment in the industry
Personal Trainer Diploma Level 3 H	Certificate in Gym Instruction Level 2.	<ul style="list-style-type: none"> Employment in the fitness industry

COURSES	ENTRY REQUIREMENTS	PROGRESSION
Sport, Health and Physical Activity – Sports Coaching Level 3 H	A minimum of five GCSEs with the following grades: English at 4 or above and maths at 4 or above and three other GCSEs at 4 or above including PE or a sports background.	<ul style="list-style-type: none"> Higher Education Employment in the industry
Personal Trainer Apprenticeship Level 3 H	A minimum of a Level 2 Fitness Instructing or other related qualification and maths and English GCSE at grade 4. To start your apprenticeship you must have secured employment that the college has agreed is suitable.	<ul style="list-style-type: none"> You will be able to enter employment as a Personal Trainer or apply for degree-level courses related to sport, fitness and nutrition.

COURSE LOCATIONS

- H** Huddersfield Centre



Travel & Tourism

AVERAGE SALARIES

£30,160

Travel Agents

£32,240

Air Travel Assistants

£30,160

Leisure and Travel Service
Occupations

There are many career options in the Travel and Tourism industry. You may be interested in becoming a resort representative, ground staff, or maybe you've set your sights on becoming cabin crew. Maybe it's the marketing and business aspects of the industry that floats your boat. Whatever your ambitions, our Travel and Tourism team is here to guide you through your study journey.

You will be expected to adhere to the professional standards of this industry from day one at college, and will be required to wear a uniform which will prepare you for working in industry. If you are doing a cabin crew or aviation course with us, you will also have access to our mock air cabin and will learn core aviation skills at college, which will help you stand out from the crowd when you apply for roles in the sector.



“My favourite part of the course is the practical cabin crew role plays. The atmosphere is one of a kind.”

Heidi, Level 2 Cabin Crew and Aviation

COURSES	ENTRY REQUIREMENTS	PROGRESSION
Introduction to Travel and Tourism Level 1 H	A minimum of four GCSEs with the following grades: English at 2 or above and maths at 1 or above and two other GCSEs at 2 or above.	<ul style="list-style-type: none"> Cabin Crew and Aviation Level 2 Travel and Tourism Level 2
Cabin Crew and Aviation Level 2 H	A minimum of five GCSEs with the following grades: English at 4 or above and maths at 2 or above and three other GCSEs at 3 or above.	<ul style="list-style-type: none"> Travel and Tourism - Aviation Level 3
Travel and Tourism Level 2 H	A minimum of four GCSEs with the following grades: English at 3 or above and maths at 2 or above and two other GCSEs at 3 or above.	<ul style="list-style-type: none"> Travel and Tourism - Aviation Level 3
Travel and Tourism - Aviation Level 3 H	A minimum of five GCSEs with the following grades: English at 4 or above and maths at 3 or above and three other GCSEs at 4 or above.	<ul style="list-style-type: none"> Training within the aviation industry Higher Education Employment

COURSE LOCATIONS

H Huddersfield Centre



Uniformed Protective Services

AVERAGE SALARIES

£51,016

Senior Officers in Fire, Ambulance, Prison and Related Services

£45,206

Paramedics

£40,144

Police Officers

If you see yourself protecting and serving the public in your career, then a Uniformed Protective Services course is for you. Our courses open up a range of career pathways, from the emergency services, security roles and progression into the armed forces.

Our tutors have had fantastic careers within the Uniformed Protective Services. They will pass on their hands-on knowledge and experience to you as you train to enter the service of your choice. You will increase your general fitness levels and physical endurance whilst developing your problem-solving skills, leadership skills and effective communication.



"I enjoy the team building tasks that we do. The tutors will always assist with your work and studies."

Jess, Level 3 Uniformed Protective Services

COURSE LOCATIONS

H Huddersfield Centre

COURSES	ENTRY REQUIREMENTS	PROGRESSION
Introduction to Uniformed Services Level 1 H	A minimum of four GCSEs with the following grades: English at 2 or above and maths at 1 or above and two other GCSEs at 2 or above.	<ul style="list-style-type: none"> Physical Preparation for Entry to the Uniformed Protective Services Level 2
Physical Preparation for Entry to the Uniformed Protective Services Level 2 H	A minimum of four GCSEs with the following grades: English at 3 or above and maths at 2 or above and two other GCSEs at 3 or above.	<ul style="list-style-type: none"> Uniformed Protective Services Level 3
Entry to Uniformed Protective Services Introductory Certificate Level 3 H	A minimum of five GCSEs with the following grades: English and maths at grade 4 or above and three other GCSEs at grade 4 or above.	<ul style="list-style-type: none"> Direct entry into the public services industry Degree level courses Employment
Uniformed Protective Services Level 3 H	A minimum of five GCSEs with the following grades: English and maths, one of which must be at a grade 4 or above and one at grade 3 or above, and three other GCSEs at grade 3 or above OR a relevant Level 2 qualification with a pass grade and GCSE English and maths, one of which must be at a grade 4 or above and one at grade 3 or above, or equivalent.	<ul style="list-style-type: none"> Direct entry into the public services industry Degree level courses Employment

Access to Higher Education



Access to HE courses provide a good foundation in the knowledge and skills required for studying at university level, so that students are confident and well prepared when they go on to higher education.

Our Access to HE courses are designed to give students relevant academic subject knowledge and the opportunity to learn how to approach study at university-level and develop techniques.

OUR PREVIOUS STUDENTS HAVE GONE ON TO STUDY:

- Pharmacology
- Physiotherapy
- Criminology
- Social Work
- Biomedical Sciences

AT UNIVERSITIES INCLUDING:

- Manchester Metropolitan University
- University of Leeds
- University of Birmingham
- University of Liverpool
- University of Huddersfield

COURSES	ENTRY REQUIREMENTS	PROGRESSION
Diploma in Progression Level 1 H	A minimum of English and maths at grade E/2 or above and one other GCSE at grade E/2 or above. Applicants must be 19+.	<ul style="list-style-type: none"> • Progress onto the Level 2 access programme or straight onto a Level 3 course (if both GCSEs are obtained within the academic year).
Progression to Access to HE Level 2 H	A minimum of either English or maths at grade 4 or a Level 1 qualification with English and maths. Applicants must be 19+.	<ul style="list-style-type: none"> • Access to HE Level 3 Diplomas depending on achievement of GCSE English and maths.

COURSE LOCATIONS

- H Huddersfield Centre
- P Pioneer Higher Skills Centre
- Online

COURSES	ENTRY REQUIREMENTS	PROGRESSION
Access to HE Health Science Professions Level 3 H P	A minimum of GCSE English and maths grade C/4 or above and ideally science grade C/4 or above. Please note we will need to see certificates/evidence that you have achieved the required GCSE grades. You will not be able to undertake the course without this. All applicants must be aged 19+.	<ul style="list-style-type: none"> • Degrees in Midwifery, Nursing, ODP, Paramedic Science, Biology, Biomedical Sciences, Occupational Therapy, plus a number of other degree courses in related health science subjects
Access to HE Humanities & Social Sciences Level 3 H	A minimum of GCSE English and maths grade C/4 or above. All applicants must be aged 19+.	<ul style="list-style-type: none"> • Degrees in Social Work, Sociology, Teaching, Psychology, Criminology and a number of other degree courses in related social science subjects
Access to HE Business Level 3 H	A minimum of GCSE English and maths grade C/4 or above. Applicants must be 19+.	<ul style="list-style-type: none"> • Degree level study • Employment
Access to HE Computing Level 3 H	A minimum of GCSE English and maths grade C/4 or above. Applicants must be 19+.	<ul style="list-style-type: none"> • Degree course in a related subject • Employment
Access to HE Science Level 3 H	A minimum of GCSE English and maths at grade C/4 or above, plus a science subject at grade 4 or above. All applicants must be aged 19+.	<ul style="list-style-type: none"> • Degrees in core science (Biology Chemistry, Physics), Forensic Science, Optometry, Pharmacy, Radiography, plus a number of other degree courses in related science subjects
Access to HE Law and Business Level 3 P	A minimum of GCSE English and maths grade C/4 or above. Applicants must be 19+.	<ul style="list-style-type: none"> • Examples of degree-level courses you could apply for include BA (Hons) Business Management, BA (Hons) Criminology and Law, BA (Hons) Business and Law and BA (Hons) Law. You can also apply for a degree apprenticeship in a related field, such as Level 6 Chartered Legal Executive and Level 7 Solicitor.

Xplorer

The Xplorer Programme is designed for students who are leaving school and need some time to focus on their English and maths, employability skills and personal development.

The programme delivers a personalised, inclusive and safe learning environment where you will find your learning challenging, enjoyable and thought-provoking. A strong focus on personal goals and how to overcome barriers to learning will be embedded in all aspects of the course.

The Xplorer programme is designed to meet the individual needs of students with a strong emphasis on developing personal, social, emotional and employability skills. The team offer a unique opportunity for learners with social, emotional or mental health (SEMH) needs to engage in learning within a nurtured environment and provides support to students to re-engage in their learning and prepare for next steps.

COURSES	ENTRY REQUIREMENTS	PROGRESSION
Xplorer Programme Level 2 H S	You will take part in an interview with the course tutor to see if the course is right for you. Students usually require GCSE English and/or maths grade 4 or above.	<ul style="list-style-type: none">After this course, you can progress onto a Level 2 or 3 full-time course at college of your choosing, apply for an apprenticeship, or go straight into the world of work.

COURSE LOCATIONS

- H** Huddersfield Centre
- S** Springfield Sixth Form Centre

How to Apply

Full-Time Courses and T Levels

You can apply for all our full-time courses online using our website. The deadline for applications is Thursday 30 April 2026 to start a full-time course in September. You may miss out on a place if you do not apply before the deadline.

How to complete your online application:

- You will need to complete this in one session – you can't save and go back to it
- Make sure you have your full address, postcode, email address and telephone number to hand to put into the form
- Some courses are available at different centres. Make sure that you click on the centre you want to study at
- You will need to put your predicted or actual GCSE grades and subjects on the form
- You will need to provide the name and contact details of someone who will provide you with a reference. Please note that references can't be from a family member. If you are still in school then we will approach your school for a reference.



Student Support

At Kirklees College, we have high expectations of attendance, behaviour and commitment and we provide support to all our students to help them achieve the best possible outcomes. You will have access to a range of student support services including:

- Pastoral Mentors and Mentors for Apprentices
- Personal Development Tutors
- Work Placement Officers
- Care Coordinators for Care Experienced students
- Support for young parents, young carers and estranged students
- Financial support
- Careers advice
- Safeguarding
- Confidential counselling
- Chaplaincy for all faiths and none
- SEND support
- Students' Union and Student Voice
- Learning Resource Centre

We work with employers, parents and carers, and local services to ensure you get the support you need to achieve your goals.



My KC Student App

This year, we launched a student app which is all your college life in your hand.

You can use the app to:

- Check your timetable
- Review and monitor your attendance
- Check your assignment progress
- Book enrichment
- Read the latest KC news
- Check your exam access arrangements and dates of exams
- Submit student voice feedback
- Report a concern anonymously
- Book an appointment with careers or counselling
- Plus so much more!

You will get support to download this, using your college email address, during induction.



Students' Union

"Hi everyone, I'm Taz and I'm really excited to welcome you all. The SU is your voice in college and we're here to make sure that your ideas, concerns and passions are heard."

Taz, Student Union President



Scan here to watch the video



Becoming an active member of the KC Students' Union is a great way to enrich your college experience and will give you skills beyond the classroom. The SU is run by our elected student executive team. Our SU represents the needs of the student body by engaging with college management, Student Voice and our Enrichment Team, championing the academic needs and social interests of students and the challenges and issues that affect our student population.

Your Voices 4 Action

At Kirklees College, your student voice is important to us. Using our active Students' Union, you will be able to voice your thoughts, opinions and ideas on what your student experience will look like at whilst at college. We have Student Class Reps and Youth Voice Champions that work with local councils, and Student Ambassadors that focus on important topics such as mental health. Giving students the first taste of democracy and citizenship by allowing them to directly solicit feedback from their peers and take an active role in shaping their college life.



Inclusive Learning

The Inclusive Learning team is committed to providing the highest standard of support for our learners with Special Education Needs or Disabilities (SEND) ensuring you enjoy a fulfilling learning experience.

Our dedicated team is here to help you achieve the best experience during your time at Kirklees College and will work with you to ensure your individual needs are supported.

You can view a full list of staff contacts on the college website. Please contact your SEND Lead and SENDCo for any SEND or EHCP queries, for course queries please contact the curriculum teams. Please contact your SEND Lead and SENDCo prior to escalating any queries to SEND managers.

Scan this QR code or visit our website to find out more information





Enrichment and Trips

Learning extends beyond the classroom and at Kirklees College, we pride ourselves on offering a wide range of Enrichment activities for students, including clubs and trips. Take a look at where our KC Students have been in the last year!



Aruba



Africa



Bali



Valencia



Disneyland Paris



Kirklees College Sports Academy

Sports Academy

We are proud to offer a performance Sports Academy that gives 16-19 students the chance to study at college whilst training and competing in Football. The academy is designed to support the development of players' technical and tactical skills.

Kirklees College Sports Academy Offers:

- A top-class training programme
- The best local training facilities
- Coaching from high-profile top-quality coaches (UEFA standard)
- Player development plans
- Strength and Conditioning programmes
- Links to professional and semi-professional clubs
- Support for students applying for scholarships in the USA



Waterfront Gym

Kirklees College has its own gym and fitness studio at our Huddersfield Centre. Rock Up and Train sessions are available to students for free (depending on timetable and availability). Training guidance from our experienced instructor is available as part of the Rock Up and Train sessions.

We also offer an extensive exercise class timetable for those interested in group training.

Taster Sessions

Taster sessions are a great way to find out about a subject area and decide if it's the right option for you. Sessions are targeted at Years 9-13 and usually take place after school where possible. Sessions are booked on a first come, first-served basis and are free to take part in. Sessions will only run if enough students sign up.

If you have any questions, please get in touch with the Student Recruitment Team on **01484 437092** or email **sturec@kirkleescollege.ac.uk**

Open Days

Come and visit us at one of our open days happening this year.

SATURDAY
18 OCTOBER

10.30am – 1pm

SATURDAY
29 NOVEMBER

10.30am – 1pm

SATURDAY
7 FEBRUARY

10.30am – 1pm

Last entry
12.30pm





www.kirkleescollege.ac.uk

