

Creating Opportunities,
Changing Lives

WHAT WILL YOU BE?

16 · 18

COURSE

GUIDE

2025/26



**KIRKLEES
COLLEGE**



WELCOME TO KIRKLEES COLLEGE

Our mission is to create opportunities and change lives by providing high-quality teaching, support and facilities to enable you to successfully progress into further training, employment or higher education. Our values of kindness, unity and excellence are at the heart of everything we do, with a shared purpose of creating a culture of high aspiration that inspires our students to succeed.

We are a uniquely vocational college and offer a wide range of programmes for young people aged 16+, through our full-time courses, apprenticeships and T Levels to ensure you achieve the best results possible and become who you want to be.

Our industry-experienced teaching and support staff prioritise your success and aim to provide an engaging and rewarding experience. Our seven different centres offer specialist learning, state-of-the-art facilities and hands-on training opportunities.

Joining the KC Community goes beyond just your experience in the classroom. We specialise in providing young people with work experience and placement opportunities to prepare you for the world of work, as well as an extensive enrichment programme that will ensure you leave college as a well-rounded young adult.

2025 is a momentous year for the college as we are celebrating 200 years of technical education in Kirklees. We will be celebrating throughout the year to mark this milestone and highlight the important work we do in our community.

This course guide will allow you to explore our subject areas and apprenticeship options, as well as some of the fantastic facilities available in our centres, to help you make the right decision for you and your future.

Ask yourself: what will you be? Find the answers at Kirklees College.

Palvinder Singh

Principal and Chief Executive, Kirklees College



HELLO! FROM THE SU PRESIDENT

WELCOME TO KIRKLEES COLLEGE!

My name is Michael and I am the Students' Union (SU) President for the 24/25 year!

Starting college can be scary for many new students but there are lots of ways you can get involved in the student community. Being involved in student life helps you make new friends, try new things and expand your knowledge, confidence and skills.

Here are some of the ways you can have your voice heard during your time at college:

- Join clubs and societies or set up your own
- Work to change things for the better for the whole college community
- Help raise money for charity
- Attend events and trips run by the Enrichment team
- Give your views and opinions and be heard about the things that affect you and your peers
- Become a Students' Union Officer – receive training and represent members of your college centre. It's also good on your CV and gives you lots of experience
- Become a Class Rep



CONTENTS

Welcome from the Principal	2	How to Apply	114
Hello from the SU President	3	Supporting You	115
Contents	4	Students' Union & Your Voices	
Kirklees College Values	6	4 Action	116
Setting Standards	7	Enrichment	117
Our Centres	8	Project SEARCH	118
Your Study Programme	16	Xplorer	119
Personal Development Pledge	17	Sport Academy & Gym	120
T Levels	18	Maths & English	121
Careers	19	Taster Sessions	122
Apprenticeships	20	Open Days	123

COURSE SUBJECT AREAS

Animal Care & Land-based	22	Hair & Beauty	72
Business & Enterprise	28	Health & Social Care	78
Construction	34	Hospitality & Catering	82
Creative Industries	40	Motor Vehicle	86
Digital Development	48	Process Manufacturing	90
Education & Early Years	52	Science	94
Engineering	56	Sport & Fitness	98
ESOL (English for Speakers of Other Languages)	62	Travel & Tourism	102
Foundation Learning	66	Uniformed Protective Services	106
		Access to Higher Education	110

DISCLAIMER The college makes every effort to provide up-to-date information but course particulars and supporting information could change at any time. Details are correct at the time of publication. The college reserves the right to make changes at any time. Courses run subject to sufficient numbers.

KIRKLEES COLLEGE VALUES

As a member of the KC Community, you are expected to uphold our college values of Kindness, Unity and Excellence. These are our guiding principles of the college and by joining us you agree to follow these values in and out of the classroom.



SETTING STANDARDS

SCAN HERE
TO VIEW THE STUDENT
CODE OF CONDUCT:



At Kirklees College, we have high expectations of our students and each lesson you attend builds on your learning so your understanding is better cemented. This means you will be able to produce better work for your assignments and be more confident in your exams, making you more likely to achieve your target grades.



Attend + Behave + Commit
= Success

- **Attend**, on time, all your timetabled learning activities
- Consistently **behave** in line with our values: Kindness, Unity and Excellence
- Fully **commit** and be prepared to engage in your learning

OUR CENTRES

-  LRC
-  FREE WIFI
-  Gym
-  Refectory

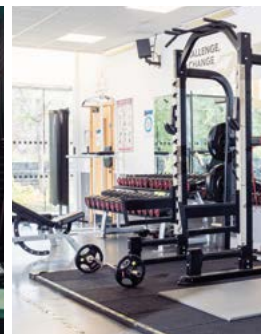
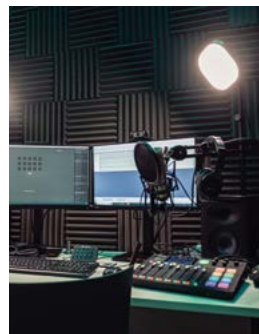
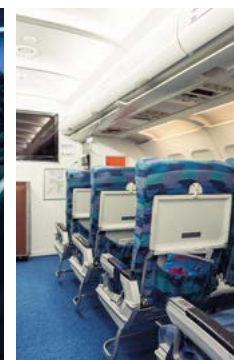


HUDDERSFIELD CENTRE

Waterfront Quarter, Manchester Road, Huddersfield, HD1 3LD

Subject Areas: Access to HE, Art and Design, Business and Enterprise, Education and Early Years, Digital Development, ESOL, English and Maths, Foundation Learning, Hair and Beauty, Health and Social Care, Hospitality and Catering, Media, Music, Uniformed Protective Services, Science, Sport and Travel and Tourism

This £70 million modern centre is our biggest and offers world-class facilities for vocational learning in the heart of Kirklees. This site boasts music and media studios, industry standard training kitchens and a restaurant, high-spec salons, advanced science labs, mock air cabin, innovation hub and mock nursing ward, providing the chance to train in a real-life environment. Outside of study areas, there is a well-equipped gym and student-led restaurant and coffee shop, Landings 72.





SPRINGFIELD SIXTH FORM CENTRE

Bradford Road, Dewsbury, WF13 2NP

Subject Areas: Business and Enterprise, Construction Multi Skills, Education and Early Years, Digital Development, ESOL, Foundation Learning, Health and Social Care and Motor Vehicle

Opened in September 2018, this award-winning centre offers modern facilities including a fully equipped Motor Vehicle workshop and Learning Resource Centre dedicated to the late Jo Cox MP stocked with the latest IT, digital media equipment and resources to support your studies.



PIONEER HIGHER SKILLS CENTRE

Halifax Road, Dewsbury, WF13 1BD

Subject Areas: Access to HE, Business and Enterprise, Education and Early Years, Digital Development, Counselling, Creative Industries, ESOL, English and Maths, Hair and Beauty and Health and Social Care

Pioneer Higher Skills Centre is over 100 years old and has a rich history which reflects the changing demands of the Dewsbury community over time. This beautiful building retains many of its original architectural features, making it a truly unique place to learn. Its facilities include classrooms, science labs, IT suites, creative workshops, a gallery, photography studio, hair and beauty therapy salons, recreation areas and a coffee shop. In 2024, the centre also opened the doors of Boothroyd's Hair and Beauty Salon to the public, so students can practice working in a real salon with paying clients.





TAYLOR HILL ANIMAL CENTRE

Close Hill Lane, Taylor Hill, Huddersfield, HD4 6LE

Subject Areas: Agriculture, Landscaping and Animal Care

This is a specialist eco-friendly centre housing a wide range of animals with an aviary, aquarium, small mammal house and dog grooming studio. The site also includes a small farm with extensive outdoor facilities and wildlife environments. In June 2024, the centre opened a brand-new Reptile House and Aquatic Centre. This specialist facility not only houses a range of species, but also has learning spaces and the most up-to-date equipment for our Animal Care and Management students to use.



BRUNEL CONSTRUCTION CENTRE

Old Fieldhouse Lane, Off Leeds Road, Huddersfield, HD2 1AG

Subject Areas: Brickwork, Joinery, Plumbing, Electrical, Plastering and Multi Skills

This dedicated centre for skilled construction trades has industry standard workshops equipped with the right tools for the practical and hands-on learning required in the construction sector. The centre has received multiple accolades for its excellent apprenticeship delivery, including the AAC FE Week Construction Apprenticeship Provider of the Year 2021 and City & Guilds Excellence in End-Point Assessment Award.





ENGINEERING CENTRE

Turnbridge Road, Off St Andrew's Road,
Huddersfield, HD1 6AG

Subject Areas: Engineering, Fabrication and Welding and Motor Vehicle

This £7.5m specialist centre boasts state-of-the-art equipment and workshops for CNC, manufacturing, maintenance, mechanics, fabrication and welding, as well as student recreation and breakout areas. There is also a dedicated automotive workshop designed to replicate a real-life Motor Vehicle workshop.

Within the Motor Vehicle workshop is a state-of-the-art Hybrid Electric Vehicle Centre, which has a range of Hybrid and EV cars, rigs and technologies to bring student's learning up-to-date with the latest sustainable innovations in the motor vehicle industry. In 2024, the centre has also received investment from the Government's Local Skills Improvement Fund (LSIF) and now has brand-new 3D printers and VR headsets for students to use that will equip them with the skills they need to work in this increasingly digital industry.



Funded by
UK Government



PROCESS MANUFACTURING CENTRE

Turnbridge Road, Off St Andrew's Road,
Huddersfield, HD1 6AG

Subject Areas: Apprenticeships in Process Manufacturing, Supply Chain, Warehousing and Logistics

This £5 million employer-led centre offers £12m equipment invested from industry, including a processing plant with automated production line and chemistry lab. Combined with expert tuition, this flagship centre provides the perfect platform to develop the practical skills required to work in the manufacturing sector.

This centre delivers a range of specialist training to the process industries, offering sector specific apprenticeships in engineering, supply chain, operations and food and drink. We also offer short online courses and longer leadership management programmes for those looking to develop in the industry.



YOUR STUDY PROGRAMME

We are a uniquely vocational college and when you enrol with us, you will study one key subject, English and Maths and have personal development built into the rest of your timetable, as required.

SUBJECT AREA

You will choose a vocational area (one subject) that will help you develop the skills future employers are looking for.

ENRICHMENT

We have a wide range of enrichment activities available for you to get involved in.



STUDY PROGRAMME

Your study programme is unique to you and is tailored to your individual needs to help you achieve your education and employment goals.

ENGLISH AND MATHS

If you don't already have GCSE grade 4 or above in English and maths, you will continue to study towards these qualifications.

SKILLS FOR...

You will have a 1.5 or 1 hour Skills For... session with your Personal Development Tutor, covering career and preparation for employment and next steps. In these sessions, you will receive information on how to access the wide range of cross college events, enrichment and work preparation activities.

Most courses will run for one year with the exception of some Level 3 courses which are two years long. If you are doing a very practical course (e.g. Construction, Hair, Catering, Motor Vehicle) then you may need to start at Level 1 irrespective of your GCSE grades. This is because these courses are skills based and probably not a course that you would have studied at

school. On a very practical course it is not unusual to stay with us for three years to get from Level 1 to Level 3.

Around Easter time your curriculum team will start talking to you about progression. To be able to progress to the next level of a course you need to have good attendance, behaviour and achieve set results.

DO YOU HAVE AN EHCP?

If you have an EHCP then please be aware that the college needs to have agreed, via the consultation period with your local authority, that we can meet the needs outlined in your EHCP before you can start on a course with us.

All progression is conditional on your attendance, behaviour and commitment at college, so work hard and you'll go far!

CAREERS GUIDANCE

- Careers guidance
- 1:1 career guidance
- Job search skills
- Jobs shop
- Interview skills
- CV development

PREPARATION FOR NEXT STEPS

- Work experience in industry
- Meet employers and visit companies
- Taster days
- Progression fairs and career events
- UCAS application support
- Higher Education week
- Apprenticeship week
- Employability week

CITIZENSHIP

- Student Voice reps
- Students' Union membership
- Social action
- British values
- Equality, Diversity and Inclusion



CITIZENSHIP

CAREERS GUIDANCE

PREPARATION FOR NEXT STEPS

PERSONAL DEVELOPMENT PLEDGE

HEALTH AND WELLBEING

SKILLS DEVELOPMENT

ENRICHMENT

HEALTH AND WELLBEING

- Peer support groups
- Confidential counselling service
- National awareness events
- Guest speakers
- Local risk awareness
- Pastoral support
- Sexual health signposting

ENRICHMENT

- Student led clubs
- Trips
- Healthy lifestyle activities
- Sport academies
- Guest speakers
- Free access to a college gym
- Cross college events

SKILLS DEVELOPMENT

- Skills competitions and live briefs
- Employer workshops and masterclasses
- Skills and standards for industry
- Work ready behaviours and skills assessments
- Technology upskilling

T LEVELS

AT KIRKLEES COLLEGE

SCAN HERE

FOR MORE
INFORMATION
ABOUT T LEVELS:



WHAT ARE T LEVELS?

A T Level is a two-year course that combines 80% classroom learning with 20% work placement. T Levels are technical qualifications that will equip you with the skills you need to progress to an apprenticeship, or directly into work, but also carry enough UCAS points for university.

WHY CHOOSE KIRKLEES COLLEGE?

As part of our T Level provision, we have opened up a number of new, state-of-the-art facilities alongside our pre-existing facilities. These include our mock hospital ward at our Huddersfield Centre built for Health and Social Care T Level students and a mock nursery for Education and Early Years T Level learning at our Pioneer Higher Skills Centre.

We pride ourselves in offering state-of-the-art facilities and we recognise that your future isn't just about getting your first job, it's about providing you with the knowledge and skills to build a career and pursue your goals in your chosen industry.



80% CLASSROOM / 20% WORK

SCAN HERE

FOR MORE
INFORMATION:



CAREERS

Kirklees College has a dedicated Careers team on hand to help all our students.

All our advisors are professionally qualified at Level 6, who will be on hand to help you at any time.

The Matrix Accredited Careers Service can provide you with independent information, advice and guidance helping you make the best decisions on learning, training and work.

The team visit all our centres regularly, allowing you to access drop-ins and job shops. You can also book a confidential appointment at any centre via a phone call, email or Teams meeting, whatever suits your needs.

The team have a dedicated area in the Atrium at our Huddersfield Centre.

Telephone: **01484 437000**

Email: **careersguidance@kirkleescollege.ac.uk**

APPRENTICESHIPS

WHAT IS AN APPRENTICESHIP?

An apprenticeship is a real job that combines practical training with study. You will work alongside experienced staff to gain the right skills and knowledge needed for your chosen career.

An apprenticeship can take between one and four years to complete depending on the level, your previous experience and the area you choose to work in. Apprenticeships are funded by contributions made by the government and your employer and do not have any fees attached for the apprentice.

WHY CHOOSE THE APPRENTICESHIP ROUTE?

An apprenticeship offers you the opportunity to learn while you earn and provides you with hands-on experience in your chosen career. You will be trained by industry professionals in a specific job role to gain the skills that employers look for.

An apprenticeship will allow you to enter the world of work and gain valuable on-the-job experience whilst earning money as you study. You won't pay tuition fees and you will make contacts in your chosen industry from the start.

For advice and support in applying for an apprenticeship and finding an employer please contact apprenticeships@kirkleescollege.ac.uk

LEARN AND EARN

Kirklees College ranks in the top 10 apprenticeship providers in the UK for apprenticeship achievement. We train over 1,000 apprentices each year, who are employed at both local and national companies.

We offer apprenticeships in the following subject areas:

- Business and Enterprise
- Digital Development
- Construction
- Creative Industries
- Education and Early Years
- Engineering
- Fabrication and Welding
- Hair and Beauty
- Hospitality and Catering
- Motor Vehicle
- Process Manufacturing
- Science
- Sport

SCAN HERE

TO SEE OUR FULL
APPRENTICESHIP
OFFER



STUDENT CASE STUDIES

"My favourite part of my apprenticeship is getting straight into work. I'm already prepared for working after my apprenticeship finishes rather than having been in traditional education for longer. I prefer being hands-on and I would recommend getting an apprenticeship to so many people."

**Aimee, Level 3 Laboratory Technician,
Orean Personal Care Ltd**



"I have always liked learning kinaesthetically rather than in a classroom, I find it easier, more interesting and easier to take in. My favourite part of doing an apprenticeship is learning everything that I can about the business, how to complete jobs and the different skills I can pick up. The college has taught me health and safety and how to properly use tools needed and electrics. It's a friendly environment so you can go there and feel ready to learn."

**Ciaran, Level 3 Mechatronics Maintenance,
Aqualand**



"I felt like an apprenticeship was the right thing for me, I like to be more hands-on so getting experience in the workplace really helped me out. Kirklees College helps with a lot of the understanding on the theory aspect behind the job I'm doing. I would 100% recommend doing an apprenticeship if you want to be more active with your learning."

George, Level 3 Metal Fabrication, YSS Ltd





SCAN HERE
FOR COURSE
DETAILS:



ANIMAL CARE & LAND-BASED

Our Animal Care and Land-based courses can open up hundreds of career opportunities for you, whether your dream job is working in a veterinary practice or as a park ranger.

Our Animal Care and Land-based courses are available across Levels 1, 2 and 3. You will study at our Taylor Hill Animal Centre, which has state-of-the-art facilities, including a brand-new £1.5m Reptile House and Aquatic Centre, as well as a dog grooming studio and training area, and farm, allowing you to gain hands-on experience in your field of study.

COURSE LOCATIONS



TAYLOR
HILL ANIMAL
CENTRE

AVERAGE SALARIES

£23,258
VETERINARY NURSES

£19,078
ANIMAL CARE
SERVICE
OCCUPATIONS

£31,548
AGRICULTURE AND
HORTICULTURE
PROPRIETORS AND
MANAGERS



"I like the course because it's not based in a classroom. Year one was very practical which helped build my confidence working with a wide range of animals and I really enjoy learning about the biology and nursing of animals too."

Megan, Animal Management Level 3

COURSES	ENTRY REQUIREMENTS	PROGRESSION
Vocational Pathways - Animal Care and Land-based Studies	There are no formal entry requirements for this course.	<ul style="list-style-type: none"> Related Level 1 course at college
Animal and Land-based Studies Level 1	A minimum of four GCSEs with the following grades: English at 2 or above and maths at 1 or above and two other GCSEs at 2 or above.	<ul style="list-style-type: none"> Landscaping and Horticulture Level 2 Agriculture Level 2 Animal Care Level 2 Conservation and Countryside Management Level 2 Dog Grooming Level 2
Animal Care Level 2	A minimum of four GCSEs with the following grades: English at 3 or above and maths at 3 or above and two other GCSEs at 3 or above.	<ul style="list-style-type: none"> Animal Care T Level Level 3 Employment
Agriculture Level 2	A minimum of four GCSEs with the following grades: English at 3 or above and maths at 2 or above and two other GCSEs at 3 or above.	<ul style="list-style-type: none"> Animal Care and Management T Level
Landscaping and Horticulture Level 2	Grade 3 in both English and maths as well as two other GCSEs at grade 2 or above.	<ul style="list-style-type: none"> Further study of Horticulture or Construction trade courses at Level 2/3 Apprenticeship Employment
Dog Grooming Assistants Level 2	A minimum of four GCSEs with the following grades: English at 3 or above and maths at 3 or above and two other GCSEs at 3 or above.	<ul style="list-style-type: none"> Level 3 Dog Grooming course or another related course
Conservation and Countryside Management Level 2	A minimum of four GCSEs with the following grades: English at 3 or above and maths at 2 or above and two other GCSEs at 3 or above.	<ul style="list-style-type: none"> Level 3 course Employment
Dog Grooming Level 3 (Full Time)	City & Guilds Dog Grooming Assistants Level 2 qualification, English at grade 4 or above and maths 3 or above.	<ul style="list-style-type: none"> Level 3 Animal Management
Animal Care T Level Foundation Year Level 2	A minimum of four GCSEs including GCSE English and maths, one at grade 4 and one at grade 3, and science grade 4.	<ul style="list-style-type: none"> Animal Care and Management T Level

COURSES	ENTRY REQUIREMENTS	PROGRESSION
Animal Care and Management T Level Level 3	A minimum of five GCSEs at grade 4 or above including English, maths and preferably science.	<ul style="list-style-type: none"> • Animal Management HNC/HND • University • Employment • Further Study





SCAN HERE
FOR COURSE
DETAILS:



BUSINESS & ENTERPRISE

Our interactive approach to learning will introduce you to the professional world of business. Whether you're interested in finance or marketing, this is the ideal platform to prepare you for a career in business.

Covering a wide range of business skills, from planning campaigns to decision making, our business courses don't just cover theory but offer you the chance to work on live briefs set by our employer partners to give you practical experience from the get-go.

COURSE LOCATIONS



HUDDERSFIELD CENTRE



PIONEER HIGHER SKILLS CENTRE



SPRINGFIELD SIXTH FORM CENTRE

Please check the individual course details on our website to see where the course will be taught

AVERAGE SALARIES

£50,605

FINANCIAL MANAGER/DIRECTOR

£29,000

BUSINESS PROJECT MANAGER

£37,062

MARKETING MANAGER

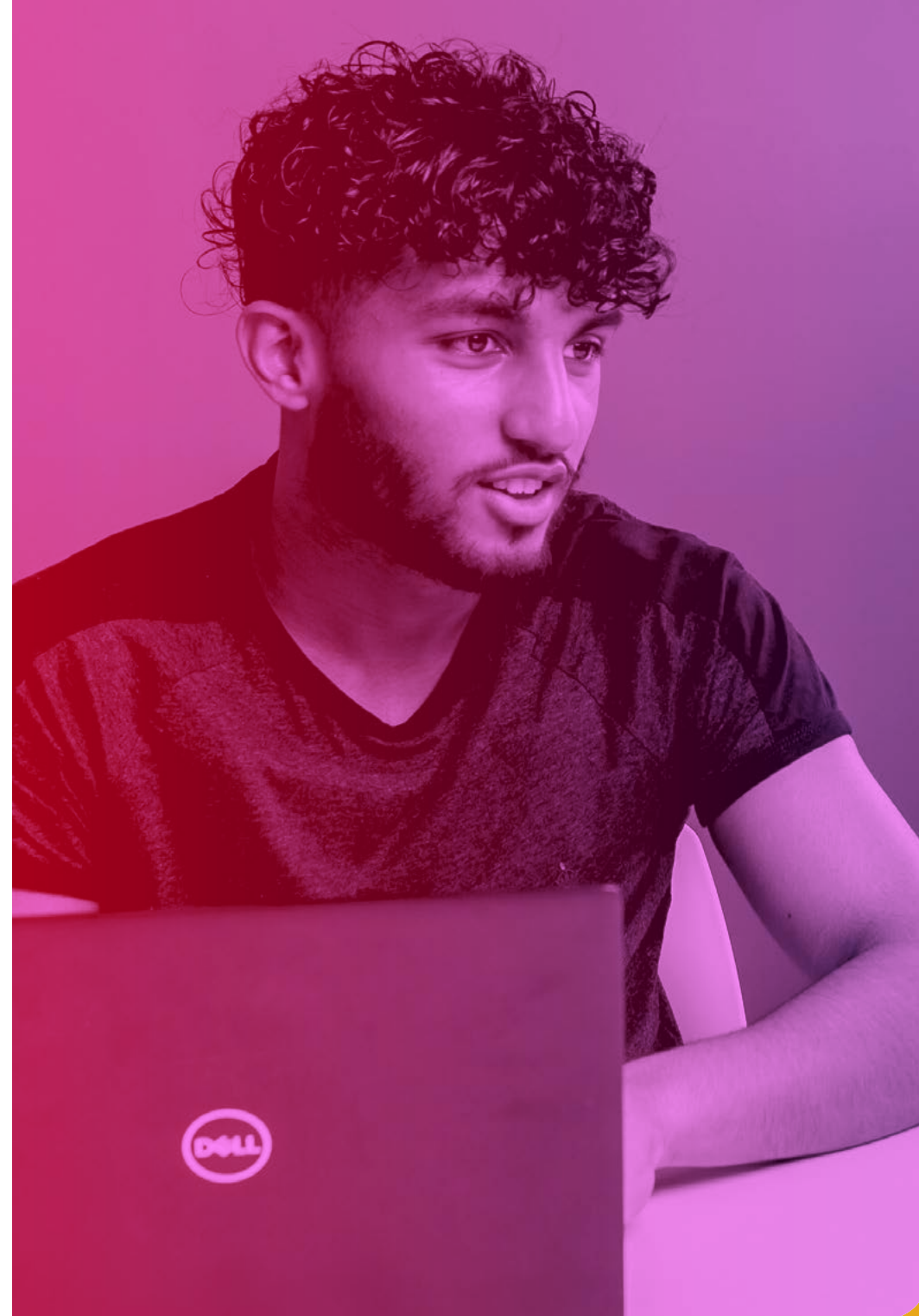


"I really like my course because you learn how different types of businesses operate. Another great part of the course is the work experience as this helps build your CV."

Haseeb, T Level Business

COURSES	ENTRY REQUIREMENTS	PROGRESSION
Vocational Studies Business Level 1	A minimum of four GCSEs with the following grades: English at 2 or above and maths at 1 or above and two other GCSEs at 2 or above.	<ul style="list-style-type: none"> Business Level 2
Business and Retail Level 1	A minimum of four GCSEs with the following grades: English at 2 or above and maths at 1 or above and two other GCSEs at 2 or above.	<ul style="list-style-type: none"> Business Level 2
Business Level 2	A minimum of four GCSEs with the following grades: English and maths at 3 or above and two other GCSEs at 3 or above.	<ul style="list-style-type: none"> Management and Administration: Team Leadership and Management T Level Level 3 Business Apprenticeship Employment
Business Level 3	A minimum of 5 GCSEs with the following grades: English and maths at 4 or above and 3 other GCSEs at 4 or above.	<ul style="list-style-type: none"> Higher Education Apprenticeship
Esports Level 2	Four GCSEs at grade 3 or above to include English and maths.	<ul style="list-style-type: none"> Esports Level 3
Esports Level 3	Five GCSEs at grade 4 or above including English and maths.	<ul style="list-style-type: none"> Higher Education/University Employment Apprenticeship
Accountancy Apprenticeship Level 2	GCSE English and maths grade 4 or above. To start your apprenticeship you must have secured employment that the college has agreed is suitable.	<ul style="list-style-type: none"> Higher level apprenticeship Other apprenticeship or progression into an appropriate job role
Customer Service Practitioner Apprenticeship Level 2	GCSE English and maths grade 3 or above. To start your apprenticeship you must have secured employment that the college has agreed is suitable.	<ul style="list-style-type: none"> Business Administration Apprenticeship Level 3 Employment
Assistant Accountant Apprenticeship Level 3	An appropriate Level 2 apprenticeship and GCSE English and maths at grade 4/C or above. To start your apprenticeship you must have secured employment that the college has agreed is suitable.	<ul style="list-style-type: none"> Level 4 apprenticeship Employment

COURSES	ENTRY REQUIREMENTS	PROGRESSION
Business Administration Apprenticeship Level 3	GCSE English and maths grade 4 or above. To start your apprenticeship you must have secured employment that the college has agreed is suitable.	<ul style="list-style-type: none"> Higher level apprenticeship Leadership and management qualification Employment
Business T Level Foundation Year Level 2	GCSE English at grade 4 or above and four other GCSEs including maths at grade 3 or above.	<ul style="list-style-type: none"> You can progress to the Level 3 T Level in Management and Administration: Team Leadership and Management
Management and Administration: Team Leadership and Management T Level Level 3	GCSE English at grade 5 or above, and four other GCSEs at grade 4 or above to include maths.	<ul style="list-style-type: none"> Higher Education Employment





SCAN HERE
FOR COURSE
DETAILS:



CONSTRUCTION

A career in Construction can be a career for life. Committing to this worldwide industry can offer personal and professional development, a bright financial future and the chance to create something that can last a lifetime.

If you're looking for a hands-on job with fantastic job prospects and career progression, then our qualifications in Construction are perfect for you. Job roles within the field are wide ranging, including specific trades such as bricklaying and plastering, as well as design, management and health and safety careers.

COURSE LOCATIONS



**BRUNEL
CONSTRUCTION
CENTRE**



**SPRINGFIELD
SIXTH FORM
CENTRE**

Please check the individual course details on our website to see where the course will be taught

AVERAGE SALARIES

£39,440

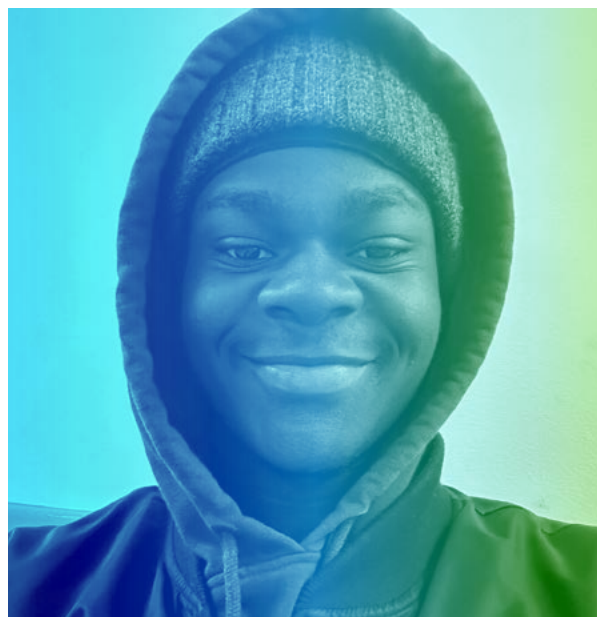
**ELECTRICAL AND
ELECTRONIC TRADES**

£37,167

**CONSTRUCTION
PROJECT MANAGER**

£27,360

BUILDING TRADES



"Studying plumbing at Brunel has been an eye-opener! From fixing leaks to mastering complex systems, every day is hands-on and exciting. The transition from high school to college can be difficult but the tutors are super supportive, making learning fun and practical. I can't wait to see where this journey takes me!"

Tanaka, Plumbing Practice Level 1

MULTI SKILLS	ENTRY REQUIREMENTS	PROGRESSION
Vocational Pathways - Multi Skills (Construction)	There are no formal entry requirements for this course.	<ul style="list-style-type: none"> Level 1 course in the construction department Another Level 1 course of your choice
Construction Multi Skills Level 1	GCSE English and maths grade 2.	<ul style="list-style-type: none"> Level 2 full-time construction course Apprenticeship
Construction Multi Skills Level 2	GCSE English grade 3 and maths grade 2.	<ul style="list-style-type: none"> Level 2 full-time construction course Apprenticeship

BRICKLAYING	ENTRY REQUIREMENTS	PROGRESSION
Bricklaying Level 1	GCSE English and maths grade 2 or above.	<ul style="list-style-type: none"> Bricklaying Level 2 Brickwork apprenticeship
Bricklaying Level 2	Level 1 relevant vocational qualification and GCSE English and maths grade 2.	<ul style="list-style-type: none"> Bricklaying Level 3 Brickwork apprenticeship
Bricklaying Apprenticeship Level 2	<p>A minimum of GCSE English and maths at grade 2 or above.</p> <p>To start your apprenticeship you must have secured employment that the college has agreed is suitable.</p>	<ul style="list-style-type: none"> Higher level apprenticeship qualification Level 3 Craft Bricklayer Employment
Craft Bricklayer Apprenticeship Level 3	<p>An appropriate Level 2 qualification, and GCSE English and maths at grade 3 or above.</p> <p>To start your apprenticeship you must have secured employment that the college has agreed is suitable.</p>	<ul style="list-style-type: none"> Employment

ELECTRICAL	ENTRY REQUIREMENTS	PROGRESSION
Electrical Installation Level 1	A minimum of GCSE English and maths grade 2 or above.	<ul style="list-style-type: none"> Electrical Installation Level 2 Apprenticeship
Electrical Installation Level 2	A minimum of GCSE English and maths grade 4 or above, or a Level 1 relevant vocational qualification.	<ul style="list-style-type: none"> Level 3 Electrical Installation course Apprenticeship Building Services for Construction: Electrotechnical Engineering T Level
Electrical Installation Level 3	Level 2 in Electrical Installation and grade 4 in English and maths.	<ul style="list-style-type: none"> Apprenticeship Further short course opportunities including 18th Edition and Testing and Inspection Higher Education

ELECTRICAL	ENTRY REQUIREMENTS	PROGRESSION
Building Services Engineering for Construction: Electrotechnical Engineering T Level Level 3	GCSE maths or Science at grade 5 and four other GCSEs at grade 4 or above to include English, maths and science.	<ul style="list-style-type: none"> HNC Electrical/Electronic Engineering Apprenticeship Employment

Electrical Installation Apprenticeship Level 3	<p>A minimum of GCSE English and maths at grade 4 or above.</p> <p>To start your apprenticeship you must have secured employment that the college has agreed is suitable.</p>	<ul style="list-style-type: none"> Level 4 qualification Professional qualification Full time employment
---	---	---

FURNITURE MANUFACTURING	ENTRY REQUIREMENTS	PROGRESSION
Furniture Manufacturer Apprenticeship Level 2: Modern Upholster	<p>GCSE English and maths at grade 2 or above.</p> <p>To start your apprenticeship you must have secured employment that the college has agreed is suitable.</p>	<ul style="list-style-type: none"> Level 3 apprenticeship Level 3 related course Employment
Furniture Manufacturer Apprenticeship Level 2: Wood Machinist	<p>GCSE English and maths at grade 2 or above.</p> <p>To start your apprenticeship you must have secured employment that the college has agreed is suitable.</p>	<ul style="list-style-type: none"> Level 3 apprenticeship Level 3 construction course Employment

JOINERY	ENTRY REQUIREMENTS	PROGRESSION
Carpentry and Joinery Level 1	A minimum of GCSE English and maths grade 2 or above.	<ul style="list-style-type: none"> Bench Joinery Level 2 Joinery apprenticeship
Bench Joinery Level 2	Level 1 relevant vocational qualification and GCSE English and maths at grade 2.	<ul style="list-style-type: none"> Joinery apprenticeship Onsite Construction: Carpentry and Joinery T Level
Architectural Joinery Apprenticeship Level 2	<p>GCSE English and maths at grade 2 or above.</p> <p>To start your apprenticeship you must have secured employment that the college has agreed is suitable.</p>	<ul style="list-style-type: none"> Level 3 advanced apprenticeship in Architectural Joinery Employment
Onsite Construction: Carpentry and Joinery T Level Level 3	Five GCSE grades 4 or above must include Maths and English.	<ul style="list-style-type: none"> Level 3 Extended Diploma in Construction HNC Construction Apprenticeship
Site Carpentry Apprenticeship Level 2	<p>GCSE English and maths at grade 2 or above.</p> <p>To start your apprenticeship you must have secured employment that the college has agreed is suitable.</p>	<ul style="list-style-type: none"> Level 3 Craft Carpentry Apprenticeship Standard Employment

JOINERY	ENTRY REQUIREMENTS	PROGRESSION
Architectural Joinery Apprenticeship Level 3	<p>An appropriate Level 2 qualification, and GCSE English and maths at grade 3 or above.</p> <p>To start your apprenticeship you must have secured employment that the college has agreed is suitable.</p>	<ul style="list-style-type: none"> Level 4 qualification Employment

Site Joinery Apprenticeship Level 3	<p>An appropriate Level 2 qualification, and GCSE English and maths at grade 4 or above.</p> <p>To start your apprenticeship you must have secured employment that the college has agreed is suitable.</p>	<ul style="list-style-type: none"> Level 4 qualification Employment
--	--	---

Craft Carpentry and Joinery Apprenticeship Level 3	<p>An appropriate Level 2 qualification, and GCSE English and maths at grade 3 or above.</p> <p>To start your apprenticeship you must have secured employment that the college has agreed is suitable.</p>	<ul style="list-style-type: none"> Employment
---	--	--

LANDSCAPING	ENTRY REQUIREMENTS	PROGRESSION
Landscaping Level 2	Grade 2 in both English and Maths as well as two other GCSEs at 2 or above.	<ul style="list-style-type: none"> Level 2/3 Construction course Apprenticeship Employment

PLASTERING	ENTRY REQUIREMENTS	PROGRESSION
Plastering Level 1	A minimum of GCSE English and maths grade 2 or above.	<ul style="list-style-type: none"> Plastering Level 2 Apprenticeship in plastering
Plastering Level 2	Level 1 relevant vocational qualification and GCSE English and maths grade 2.	<ul style="list-style-type: none"> Level 3 apprenticeship Employment
Plastering Apprenticeship Level 2	<p>GCSE English and maths at grade 2 or above.</p> <p>To start your apprenticeship you must have secured employment that the college has agreed is suitable.</p>	<ul style="list-style-type: none"> Higher level apprenticeship qualification Employment

PLUMBING	ENTRY REQUIREMENTS	PROGRESSION
Plumbing Level 1	A minimum of GCSE English and maths grade 2 or above.	<ul style="list-style-type: none"> Plumbing Level 2 Apprenticeship
Plumbing and Heating Level 2	A minimum of GCSE English and maths grade 4 or above, or a Level 1 relevant vocational qualification.	<ul style="list-style-type: none"> Plumbing and Heating Apprenticeship Level 3
Plumbing and Domestic Heating Apprenticeship Level 3	<p>A minimum of grade 4 in GCSE English and maths.</p> <p>To start your apprenticeship you must have secured employment that the college has agreed is suitable.</p>	<ul style="list-style-type: none"> A Level 4 qualification Professional qualification Full time employment



CREATIVE INDUSTRIES

According to the West Yorkshire Local Skills Improvement Plan, the Creative Industries is one of the largest growing sectors in our region. Whether your interests lie in art and design, music or media, we have a range of vocational courses from Level 1 to 3 that will allow you to perfect your craft and become a practitioner in your field.

At Kirklees College, you will benefit from amazing facilities for creative courses, from textile and printmaking facilities at our Pioneer Higher Skills Centre, to brand-new digital music production equipment and multi-media generation facilities at our Huddersfield Centre. All of our Creative Industries courses are hands-on, and you will also benefit from enhanced work experience opportunities to help you prepare for a career in this exciting world.



Funded by
UK Government

COURSE LOCATIONS



HUDDERSFIELD CENTRE



PIONEER HIGHER SKILLS CENTRE

Please check the individual course details on our website to see where the course will be taught

AVERAGE SALARIES

£34,343

FASHION DESIGNERS

£28,200

ARTISTS

£25,531

GRAPHIC DESIGNERS

ART & DESIGN



"The facilities at Kirklees College are exactly what I needed, being on an Art and Design course means I needed very specialised equipment to create the best outcomes possible. The techniques we get taught here are what is also used in industry and I feel it has put me on track to be very knowledgeable and successful when it comes time to move on."

Rosie, Level 3 Art and Design

SCAN HERE
FOR COURSE
DETAILS:



COURSES	ENTRY REQUIREMENTS	PROGRESSION
Pathway to Creative Arts	There are no formal entry requirements for this course.	<ul style="list-style-type: none"> Accredited Level 1 course within the college or employment Gaining your GCSE in English and maths will support this transition
Skills for Creative Industries Level 1	Four GCSEs grade 2 or above including English and/or maths and an art-based subject.	<ul style="list-style-type: none"> Art and Design Level 2 Fashion Level 2 Media Level 2 Music Level 2
BTEC Art and Design Level 2	A minimum of four GCSEs with the following grades: English at 3 or above and maths at 2 or above and two other GCSEs at 3 or above.	<ul style="list-style-type: none"> Art and Design Level 3 Fashion and Textiles Level 3
Fashion Level 2	A minimum of four GCSEs with the following grades: English at 3 or above and maths at 2 or above and two other GCSEs at 3 or above, ideally to include an art and design subject.	<ul style="list-style-type: none"> Fashion and Textiles Level 3 Art and Design Practice Level 3
Art and Design Practice Level 3	Five GCSEs at grade 4 or above including English and maths and a GCSE in an art or creative subject.	<ul style="list-style-type: none"> Higher Education Employment
Fashion and Textiles Level 3	Five GCSEs at grade 4 or above including English and maths and a GCSE in an art or creative subject.	<ul style="list-style-type: none"> Higher Education Employment

COURSE LOCATIONS



HUDDERSFIELD
CENTRE

AVERAGE SALARIES

£36,422

MANAGERS AND
DIRECTORS IN
CREATIVE INDUSTRIES

£32,450

ARTS OFFICERS,
PRODUCERS AND
DIRECTORS

£25,962

PHOTOGRAPHERS
AND AUDIO-
VISUAL EQUIPMENT
OPERATORS

MEDIA



"I chose Kirklees College because of the practical learning involved and the lessons on how to work in the industry specifically. My favourite part of the course is the studio time we get. The tutors are all supportive and listen to your ideas without undermining them, they give out personalised advice to each student. I would recommend Kirklees College especially if you want practical learning and employability understanding."

Niamh, Creative Media Level 3

SCAN HERE
FOR COURSE
DETAILS:



COURSES	ENTRY REQUIREMENTS	PROGRESSION
Pathway to Creative Arts	There are no formal entry requirements for this course.	<ul style="list-style-type: none"> Accredited Level 1 course within the college or employment Gaining your GCSE in English and maths will support this transition
Skills for Creative Industries Level 1	Four GCSEs grade 2 or above in English and/or maths and an art-based subject.	<ul style="list-style-type: none"> Art and Design Level 2 Fashion Level 2 Media Level 2 Music Level 2
BTEC Creative Media Level 2	A minimum of four GCSEs with the following grades: English at 3 or above and maths at 2 or above and two other GCSEs at 3 or above.	<ul style="list-style-type: none"> Creative Media Practice Level 3
Creative Media Practice Level 3	A minimum of five GCSEs with the following grades: English at 4 or above and maths at 3 or above and three other GCSEs at 4 or above.	<ul style="list-style-type: none"> Level 4 course Higher Education Employment

COURSE LOCATIONS



HUDDERSFIELD
CENTRE

AVERAGE SALARIES

£28,200
MUSICIANS

£36,422
MANAGERS AND
DIRECTORS IN
CREATIVE INDUSTRIES

£24,822
EVENTS MANAGERS
AND ORGANISERS

MUSIC



"The reason I chose to study at Kirklees College was the facilities, the range of amps and guitars and they also were able to accommodate me resitting a GCSE while I did my course. I would definitely recommend Kirklees College due their range of facilities and the kindness of the staff. After completing my course I am going onto do my degree with BIMM Music Institute in Manchester."

Fintan, Music Level 3

SCAN HERE
FOR COURSE
DETAILS:



COURSES	ENTRY REQUIREMENTS	PROGRESSION
Pathway to Creative Arts	There are no formal entry requirements for this course.	<ul style="list-style-type: none"> Accredited Level 1 course within the college or employment Gaining your GCSE in English and maths will support this transition
Vocational Pathways - Pathway to Service Industries	There are no formal entry requirements for this course.	<ul style="list-style-type: none"> You will be able to progress to another Level 2 course at college
Skills for Creative Industries Level 1	Four GCSEs grade 2 or above in English and/or maths and an art-based subject.	<ul style="list-style-type: none"> Art and Design Level 2 Fashion Level 2 Media Level 2 Music Level 2
Diploma in Creative Industries – Music Pathway Level 2	A minimum of four GCSEs with the following grades: English at 3 or above and maths at 2 or above and two other GCSEs at 3 or above.	<ul style="list-style-type: none"> You can progress onto Level 3 Music or another related Level 3 course.
National Extended Diploma in Music Level 3	A minimum of five GCSEs with the following grades: English at 4 or above and maths at 3 or above and three other GCSEs at 4 or above.	<ul style="list-style-type: none"> University Level 4/5 qualification Employment



SCAN HERE
FOR COURSE
DETAILS:



DIGITAL DEVELOPMENT

You've grown up in an online world where technology is fundamental to the way we live our lives. From social media and gaming to video and streaming, technology is fundamental to the way we live our lives.

The digital industry is one of the fastest growing sectors in the world and we're investing in providing you with opportunities in the digital sector with our new Digital Development Hub for games, software and website development. Whether your interests lie in coding for gaming, or social media content creation, our range of specialised digital courses can help you make your dream job a reality.

COURSE LOCATIONS



HUDDERSFIELD
CENTRE



SPRINGFIELD
SIXTH FORM
CENTRE

Please check the individual course details on our website to see where the course will be taught

AVERAGE SALARIES

£63,584
IT DIRECTOR

£42,269
CYBER SECURITY
PROFESSIONAL

£37,319
WEB DESIGNER



"I wanted to further my education in a very comfortable and academic place. The games development course caught my attention and has fit me like a glove. The facilities at the college are 10/10 there is nowhere better. I'm going to progress onto Level 3 Games Development. Kirklees College is a great college, I would recommend attending."

Will, Games Development Level 2

COURSES	ENTRY REQUIREMENTS	PROGRESSION
Vocational Studies Digital Development Level 1	A minimum of four GCSEs with the following grades: English at 2 or above and maths at 1 or above and two other GCSEs at 2 or above.	<ul style="list-style-type: none"> Digital Development Level 2
Digital Development Level 2	A minimum of four GCSEs including: English and maths at 3 or above and two other GCSEs at 3 or above.	<ul style="list-style-type: none"> Software Development Level 3
Games Development Level 2	Four GCSEs grade 3 or above to include English and maths.	<ul style="list-style-type: none"> Games Development Level 3
Games Development Level 3	Five GCSEs grade 4 or above to include English and maths.	<ul style="list-style-type: none"> Higher Education Apprenticeship Employment
Web Development Level 3	Five GCSEs grade 4 or above to include English and maths.	<ul style="list-style-type: none"> Higher Education Degree in Web Development
Software Development Level 3	Five GCSEs grade 4 or above, including English and maths and a Media or Art and Design subject.	<ul style="list-style-type: none"> Higher Education Degree in Software Development
Digital Production, Design and Development T Level Level 3	GCSE English grade 5 or above, and four other GCSEs grade 4 or above to include maths.	<ul style="list-style-type: none"> Higher Education Employment
Content Creator Apprenticeship Level 3	<p>A minimum of five GCSEs grade 4 or above including English, maths and art or technology subject.</p> <p>To start your apprenticeship you must have secured employment that the college has agreed is suitable.</p>	<ul style="list-style-type: none"> Higher level apprenticeship Employment
Cyber Security Technician Apprenticeship Level 3	<p>GCSE grade 4 or above in maths and English.</p> <p>To start your apprenticeship you must have secured employment that the college has agreed is suitable.</p>	<ul style="list-style-type: none"> Level 4 apprenticeship in fields of networks and cybersecurity University Employment
Information Communications Technician Apprenticeship Level 3	<p>GCSE grade 4 or above in GCSE English, maths and an IT qualification or relevant experience.</p> <p>To start your apprenticeship you must have secured employment that the college has agreed is suitable.</p>	<ul style="list-style-type: none"> Higher Education qualification in Computing and IT Full-time employment
Multi-Channel Marketer Apprenticeship Level 3	<p>English and maths grade 4 or above.</p> <p>To start your apprenticeship you must have secured employment that the college has agreed is suitable.</p>	<ul style="list-style-type: none"> Level 4 apprenticeship Higher Education Employment



SCAN HERE
FOR COURSE
DETAILS:



EDUCATION & EARLY YEARS

A career in the Early Years and Education sector is unique and rewarding. Working in the sector will make a big difference to helping children get the best start in life and shaping their future. There are many areas of the profession you can work in, including a nursery, pre-school and schools in jobs such as a childminder, nursery nurse or primary school teacher.

We teach Education and Early Years courses across our Huddersfield and Dewsbury centres, with a mock nursery at our Huddersfield and Pioneer Higher Skills Centre so you can train in a real-life environment. There's also work experience opportunities to further enhance your professional skills outside of college.

COURSE LOCATIONS



HUDDERSFIELD
CENTRE



SPRINGFIELD
SIXTH FORM
CENTRE



PIONEER
HIGHER SKILLS
CENTRE

Please check the individual course details on our website to see where the course will be taught

AVERAGE SALARIES

£28,536

NURSERY EDUCATION
TEACHING
PROFESSIONALS

£32,643

EARLY EDUCATION
AND CHILDCARE
SERVICES MANAGERS

£35,148

PRIMARY SCHOOL
TEACHERS



"During my time at Kirklees College, I have progressed from Level 2 to T Level. My tutors have been consistently supportive and are helping me work towards my goal of becoming a Level 3 Practitioner. I find joy in working with children, planning activities and demonstrating them before implementing these in placement."

Laura, T Level Early Years Educator

COURSES	ENTRY REQUIREMENTS	PROGRESSION
Pathway to Care	There are no formal entry requirements for this course.	<ul style="list-style-type: none"> Accredited Level 1 course within the college or employment. Gaining your GCSE in English and maths will support this transition.
Introduction to Health, Social Care and Children and Young Peoples Services Level 1	A minimum of four GCSEs with the following grades: English at 2 or above and maths at 1 or above and two other GCSEs at 2 or above. A fully enhanced DBS check is also required.	<ul style="list-style-type: none"> Certificate in Working with Children in Early Years and Primary Settings Level 2
Certificate in Working with Children in Early Years and Primary Settings Level 2	A minimum of 4 GCSEs with the following grades: English at 3 or above and maths at 2 or above and 2 other GCSEs at 3 or above. You will also need to have a fully enhanced DBS check.	<ul style="list-style-type: none"> Apprenticeship Early Years Educator T Level Level 3
Early Years Practitioner T Level Foundation Year Level 2	A minimum of four GCSEs with the following: English at 3 or above and maths at 3 or above and another two GCSEs at 3 or above. You will also need a fully enhanced DBS check.	<ul style="list-style-type: none"> Early Years Educator T Level Level 3 Early Years Educator Apprenticeship
Education and Childcare: Early Years Educator T Level Level 3	A minimum of five GCSEs with the following grades: five GCSEs at grade 4 or above, including English Language and maths. You will also need to have a fully enhanced DBS check.	<ul style="list-style-type: none"> Foundation Degree Higher Education
Early Years Practitioner Apprenticeship Level 2	Grade 3 and above in English Language and three other GCSEs at grade 3 and above. You can be 16 years old to apply for this apprenticeship but it is at the discretion of the employer whether they are willing to hire a 16-year-old apprentice. To start your apprenticeship you must have secured employment that the college has agreed is suitable.	<ul style="list-style-type: none"> Early Years Educator T Level Level 3 Foundation degree in Early Years Education Full-time employment
Early Years Educator Apprenticeship Level 3	Level 2 or grade 4 and above in five subjects which must include maths and English Language. You can be 16 years old to apply for this apprenticeship but it is at the discretion of the employer whether they are willing to hire a 16-year-old apprentice. To start your apprenticeship you must have secured employment that the college has agreed is suitable.	<ul style="list-style-type: none"> Foundation degree in Early Years Education or another Higher Education course Full-time employment



SCAN HERE

FOR COURSE
DETAILS:



ENGINEERING

Engineering is everywhere! It already plays a leading role in the products we use daily and the environments in which we live. The foundations of engineering underpin the very fabric of society, from the transport we use, to the buildings we live and work in. If you want to help create the technology and equipment that everyone relies on, every day, then a career in engineering is for you.

Our Engineering Centre is a world-class facility with state-of-the-art equipment for a whole range of Engineering disciplines, including Fabrication and Welding, CAD, CAM, Machining and more. This year, we have secured a share of £6.9million from government funding for new digital equipment at our Engineering Centre, including new 3D printers, automation kit, a robotic arm and VR headsets.



**Funded by
UK Government**

COURSE LOCATIONS



AVERAGE SALARIES

£51,856

ELECTRICAL ENGINEERS

£46,048

CIVIL ENGINEERS

£39,338

ENGINEERING TECHNICIANS



"My T Level placement has allowed me to gain more in-depth knowledge and insight about the aeronautical engineering sector. This has allowed me to explore what I want to go into in the future."

Calum, T Level Engineering, Manufacturing, Processing and Control

COURSES	ENTRY REQUIREMENTS	PROGRESSION
Pathway to Engineering	There are no formal entry requirements for this course.	<ul style="list-style-type: none"> Level 1/2 Engineering course
Engineering and Manufacturing Level 1	A minimum of four GCSEs with the following grades: English and maths at 2 or above and two other GCSEs at 2 or above ideally in a science or technology subject.	<ul style="list-style-type: none"> Engineering and Manufacturing Level 2
Engineering and Manufacturing Level 2	A minimum of four GCSEs with the following grades: English at 3 or above and maths at 3 or above and two other GCSEs at 3 or above including a science or technology course.	<ul style="list-style-type: none"> Level 3 course in Engineering and Manufacturing Level 3 Engineering Apprenticeships Engineering, Manufacturing, Processing and Control T Level Level 3
Fabrication and Welding Level 2	A minimum of grade 3 in maths and English.	<ul style="list-style-type: none"> Level 3 Metal Fabricator Apprenticeship Level 3 course in Engineering and Manufacturing Level 3 Engineering Apprenticeship
Engineering and Manufacturing Level 3	A minimum of five GCSEs with the following grades: English at 4 or above and maths at 5 or above and three other GCSEs at 4 or above including a science or technology course.	<ul style="list-style-type: none"> Higher Education Apprenticeship Employment
Engineering T Level Foundation Year Level 2	A minimum of four GCSEs with the following grades: English at 3 or above and maths at 3 or above and two other GCSEs at 3 or above including a science or technology course.	<ul style="list-style-type: none"> Engineering, Manufacturing and Processing and Control T Level Level 3 Engineering and Manufacturing Level 3
Engineering and Manufacturing: Manufacturing, Processing and Control T Level Level 3	A minimum of five GCSEs with the following grades: English at 4 or above and maths at 5 or above and three other GCSEs at 4 or above including a science or technology course.	<ul style="list-style-type: none"> HNC/HND Apprenticeship Degree
Metal Fabricator Apprenticeship Level 3	<p>A minimum of grade 4 or above in GCSE English, maths and a science or technology subject.</p> <p>To start your apprenticeship you must have secured employment that the college has agreed is suitable.</p>	<ul style="list-style-type: none"> Employment

COURSES	ENTRY REQUIREMENTS	PROGRESSION
Engineering Technician (Mechatronics Maintenance) Apprenticeship Level 3	<p>A minimum of grade 4 or above in GCSE English, maths and a science or technology subject.</p> <p>To start your apprenticeship you must have secured employment that the college has agreed is suitable.</p>	<ul style="list-style-type: none"> • Higher level apprenticeship/ HNC • Degree level qualification • Full-time employment
Machining Technician Apprenticeship Level 3	<p>A minimum of grade 4 or above in GCSE English, maths and a science or technology subject.</p> <p>To start your apprenticeship you must have secured employment that the college has agreed is suitable.</p>	<ul style="list-style-type: none"> • Higher level apprenticeship/ HNC • Degree level qualification • Full-time employment
Engineering Fitter Apprenticeship Level 3	<p>A minimum of grade 4 or above in GCSE English, maths and a science or technology subject.</p> <p>To start your apprenticeship you must have secured employment that the college has agreed is suitable.</p>	<ul style="list-style-type: none"> • Higher level apprenticeship/ HNC • Degree level qualification • Full-time employment
Engineering Technician (Technical Support) Apprenticeship Level 3	<p>A minimum of grade 4 or above in GCSE English, maths and a science or technology subject.</p> <p>To start your apprenticeship you must have secured employment that the college has agreed is suitable.</p>	<ul style="list-style-type: none"> • Higher level apprenticeship/ HNC • Degree level qualification • Employment





SCAN HERE
FOR COURSE
DETAILS:



ESOL

ENGLISH FOR SPEAKERS OF OTHER LANGUAGES

A good grasp of the English language is important for all our futures. As a second language, it will help improve your communication skills, job opportunities and helps you play an active role in society.

English for Speakers of Other Languages (ESOL) courses are designed for students who do not speak English as a first language. From Entry Level upwards, we focus on improving your English listening, speaking, reading, writing and grammar with the opportunity to gain a nationally recognised qualification.

COURSE LOCATIONS

HUDDERSFIELD CENTRE

SPRINGFIELD SIXTH FORM CENTRE

Please check the individual course details on our website to see where the course will be taught



"I chose to study here as it's a very nice college and I wanted to get better at English. The tutors here explain everything very well and help you understand. I would like to go onto university to be a nurse."

Mabelle Christiana, Entry Level ESOL



COURSES	ENTRY REQUIREMENTS	PROGRESSION
English For Speakers of Other Languages (ESOL)	This course is for young people aged 16 – 18. There are no formal entry requirements for this course. You will take part in an interview including an initial assessment prior to being enrolled on the right level of course.	<ul style="list-style-type: none">Vocational course once you have gained Entry Level 3 Functional Skills



SCAN HERE
FOR COURSE
DETAILS:



FOUNDATION LEARNING

Our Foundation Learning courses are designed to help support people wanting to improve their life skills for work and everyday living. Delivered in a safe, supportive and nurturing environment, our committed team offers specialist support to each student based upon their individual needs.

We have a range of facilities at our Huddersfield Centre and Springfield Sixth Form Centre in Dewsbury. These include specialist classrooms, social areas, regulation spaces, community gardens and kitchens. We also have independent living spaces to help students learn the skills they need to live with greater independence. Our volunteering opportunities and work-related activities include Beaumont Park, Bradley Woods Scout Centre, Riding for the Disabled Centre, Oxfam, Batley Bulldogs and Huddersfield Town Foundation.

Students are able to follow pathways for their studies; Pathway to Independence, Pathway to employment or Pathway to Vocational Curriculum. Each pathway contains a range of programmes that build on the skills they have learnt.

COURSE LOCATIONS



**HUDDERSFIELD
CENTRE**



**SPRINGFIELD
SIXTH FORM
CENTRE**

Please check the individual course details on our website to see where the course will be taught



"I chose Kirklees College because they are helping me pass my English and Maths. My favourite part of the course is the cooking and learning my English and Maths. The tutors are good and I would rate the college facilities 5/5."

Daniyal, Work Focus Level 1

DO YOU HAVE AN EHCP?

If you have an EHCP then please be aware that the college needs to have agreed, via the consultation period with your local authority, that we can meet the needs outlined in your EHCP before you can start on a course with us.

PATHWAY TO INDEPENDENCE

COURSES	ENTRY REQUIREMENTS	PROGRESSION
Preparation for Community Access	There are no formal entry requirements. You will take part in an interview to see if the course is right for you and to see if you have any additional support needs.	<ul style="list-style-type: none"> This course has been designed as an entry level to the Pathway to Independence. Students may progress within the Pathways model that matches their current progress against the preparation for adulthood framework, their EHCP outcomes and their aspirations for the future.
Preparation for Semi-Supported Living	There are no formal entry requirements. You will take part in an interview to see if the course is right for you and to see if you have any additional support needs.	<ul style="list-style-type: none"> This course has been designed as a middle entry point or progression route on the Pathway to Independence. Students may progress within the Pathways model that matches their current progress against the preparation for adulthood framework, their EHCP outcomes and their aspirations for the future.
Preparation for Independent Living	There are no formal entry requirements. You will take part in an interview to see if the course is right for you and to see if you have any additional support needs.	<ul style="list-style-type: none"> This course has been designed as the end entry point or progression route on the Pathway to Independence. Students may progress onto external provision or the employment pathway depending upon their EHCP outcomes and their aspirations for the future.

PATHWAY TO EMPLOYMENT

COURSES	ENTRY REQUIREMENTS	PROGRESSION
Work Related Skills	There are no formal entry requirements. You will take part in an interview to see if you have a demonstrable desire to work and to see if you have any additional support needs.	<ul style="list-style-type: none"> This course has been designed as an entry level to the Pathway to Employment. Students may progress within the Pathways model that matches their current progress against the preparation for adulthood framework, their EHCP outcomes and their aspirations for the future.
Preparation for Supported Internship	There are no formal entry requirements. You will take part in an interview to see if you have a demonstrable desire to work and to see if you have any additional support needs.	<ul style="list-style-type: none"> This course has been designed as a middle entry point or progression route on the Pathway to Employment. Progression onto a supported internship, part-time or full-time paid employment or voluntary work.
Project Search Supported Internship	There are no formal entry requirements. You will take part in an interview that involves an employer to see if you have a demonstrable desire to work and to see if you have any additional support needs.	<ul style="list-style-type: none"> This is the final stage of the employment pathway and students will be supported to find employment of 16 hours or more.

PATHWAY TO VOCATIONAL CURRICULUM

COURSES	ENTRY REQUIREMENTS	PROGRESSION
E3 Progression	There are no formal entry requirements. You will take part in an interview to see if the course is right for you and to see if you have any additional support needs.	<ul style="list-style-type: none"> Level 1 Work skills, Level 1 vocational course or employment.
Work Skills Level 1	You will take part in an interview to see if the course is right for you and to see if you have any additional support needs. You will need to be working at Entry Level 3 or above in English.	<ul style="list-style-type: none"> A level 1 course, vocational course in a variety of areas at level 1 or 2, apprenticeship or employment.





SCAN HERE
FOR COURSE
DETAILS:



HAIR & BEAUTY

The Hair and Beauty industry is highly creative and continues to grow and evolve. If you love to express yourself through personal styling, hair, makeup and beauty treatments, starting your career with a vocational course at Kirklees College is the perfect place to start.

With a range of Level 1 – 3 courses available in Dewsbury and Huddersfield, you will train in one of our public salons at our Huddersfield Centre or Pioneer Higher Skills Centre. Both salons are fully equipped with hair, barbering, makeup and spa equipment and tools that are used in industry. All of our tutors are industry experienced also, and many still work part-time as barbers, hairdressers and beauticians, so you will be learning from the experts.

COURSE LOCATIONS



HUDDERSFIELD
CENTRE



PIONEER
HIGHER SKILLS
CENTRE

Please check the individual course details on our website to see where the course will be taught

AVERAGE SALARIES

£34,230

HAIRDRESSING AND
BEAUTY SALON
MANAGERS

£13,379

BEAUTICIANS

£13,317

HAIRDRESSERS AND
BARBERS



"My main reason for choosing Kirklees College was the course, I found the different units on the course to be what first drew me towards to college. The practical work involved in my course is what I enjoy the most, being able to use the equipment that is also used in industry. Kirklees College helped me gain work experience in a salon which has then kept me on as a part time worker. The facilities at Pioneer are very impressive, inside and out."

Katie, Beauty Level 3

HAIR & BEAUTY COURSES	ENTRY REQUIREMENTS	PROGRESSION
Pathway to Hair and Beauty	There are no formal entry requirements for this course.	<ul style="list-style-type: none"> Level 1 Hair and Beauty courses
Hair and Beauty Level 1	A minimum of GCSE English and maths grade 1 or above.	<ul style="list-style-type: none"> Hair Level 1 Beauty Level 2
Hair and Media Makeup Level 2	A minimum of GCSE English and maths grade 2 or above.	<ul style="list-style-type: none"> Make-up Artistry Level 3 Theatrical, Special Effects and Hair Media Makeup Level 3
Theatrical, Special Effects and Hair and Media Makeup Level 3	A minimum of GCSE English and maths grade 3 in either and a Level 2 relevant vocational qualification.	<ul style="list-style-type: none"> Higher Education Employment within the theatre or television industry as a makeup professional

BEAUTY COURSES	ENTRY REQUIREMENTS	PROGRESSION
Beauty Level 1	A minimum of GCSE English and maths grade 1 or above.	<ul style="list-style-type: none"> Hairdressing Level 1 Beauty Level 2 Media Makeup Level 2
Beauty Therapy Level 2	A minimum of GCSE English and maths grade 2 or above.	<ul style="list-style-type: none"> Beauty Level 3 Makeup Artistry Level 3 Apprenticeship Beauty T Level
Beauty Therapy General Route Level 3	A minimum of GCSE English and maths grade 3 in either and a Level 2 relevant vocational qualification.	<ul style="list-style-type: none"> Beauty Therapy Level 4 courses Employment in salons, spas, cruise ships, your own business Higher Education
Makeup Artistry Level 3	A minimum of GCSE English and maths grade 3 in either and a Level 2 relevant vocational qualification.	<ul style="list-style-type: none"> Employment as a makeup professional
Beauty Therapy Massage Treatment Route Level 3	A minimum of GCSE English and maths grade 3 in either and a Level 2 relevant vocational qualification.	<ul style="list-style-type: none"> Level 4 Beauty Therapy Employment in salons, spas, cruise ships, your own business
Beauty Therapy T Level Level 3	A minimum of five GCSEs at grade 4 including English, maths and science.	<ul style="list-style-type: none"> Higher Education Employment
Beauty Apprenticeship Level 2	GCSE English and maths grade 2 or above. To start your apprenticeship you must have secured employment that the college has agreed is suitable.	<ul style="list-style-type: none"> Employment in a salon Beauty Therapy Level 3

HAIRDRESSING COURSES	ENTRY REQUIREMENTS	PROGRESSION
Hairdressing Level 1	A minimum of GCSE English and maths grade 1 or above.	<ul style="list-style-type: none"> • Hairdressing Level 2 • Barbering Level 2 • Apprenticeship
Hairdressing Level 2	A minimum of GCSE English and maths grade 2 or above and a Level 1 relevant vocational qualification.	<ul style="list-style-type: none"> • Hairdressing Level 3 • Employment or self-employment • Apprenticeship
Women's Hairdressing Level 3	A minimum of GCSE English and maths grade 3 in either and a Level 2 relevant vocational qualification.	<ul style="list-style-type: none"> • Specialist industry training • Employment in salons, including managerial roles
Hair Professionals (Hairdressing) Apprenticeship Level 2	<p>GCSE English and maths grade 2 or above.</p> <p>To start your apprenticeship you must have secured employment that the college has agreed is suitable.</p>	<ul style="list-style-type: none"> • Hairdressing (full-time or part-time) Level 3 • Employment • Apprenticeship Level 3

BARBERING COURSES	ENTRY REQUIREMENTS	PROGRESSION
Barbering Level 1	A minimum of GCSE English and maths grade 1 or above.	<ul style="list-style-type: none"> • Barbering Level 2 • Apprenticeship
Barbering Level 2	A minimum of GCSE English and maths grade 2 or above.	<ul style="list-style-type: none"> • Barbering Level 3 • Apprenticeship • Employment/self-employment
Barbering Level 3	A minimum of GCSE English and maths grade 3 in either and a Level 2 relevant vocational qualification.	<ul style="list-style-type: none"> • Employment/self-employment
Hair Professionals (Barbering) Apprenticeship Level 2	<p>GCSE English and maths grade 2 or above.</p> <p>To start your apprenticeship you must have secured employment that the college has agreed is suitable.</p>	<ul style="list-style-type: none"> • Barbering apprenticeship Level 3 • Barbering full-time or part-time course Level 3 • Employment





SCAN HERE
FOR COURSE
DETAILS:



HEALTH & SOCIAL CARE

The Health and Social Care sector is the biggest sector in West Yorkshire, employing over 160,000 people in the region*. At Kirklees College, we offer Health and Social Care courses at Levels 1 – 3, providing you with hands-on work experience, and a blend of practical and theoretical learning to prepare you for a career in this essential industry.

Our specialist facilities include our mock hospital ward at our Huddersfield Centre, which has state-of-the-art hospital beds, training manikins which mimic the real symptoms of a human patient, and a range of real healthcare tools to practice nursing duties with. If you choose to apply for a T Level course with us, you will use this unique facility to put theory into practice.

* West Yorkshire Local Skills Improvement Plan

COURSE LOCATIONS



HUDDERSFIELD CENTRE



SPRINGFIELD SIXTH FORM CENTRE

Please check the individual course details on our website to see where the course will be taught

AVERAGE SALARIES

£22,706

SENIOR CARE WORKERS

£37,566

REGISTERED NURSE PRACTITIONERS

£36,644

MENTAL HEALTH NURSES



"Kirklees College have been very understanding of my home life and possible changes to my timetable that might happen. My tutors are lovely and that is something I haven't experienced before, it is very refreshing. The college is helping me with my aim of going to university."

Taya, Health and Social Level 3

COURSES	ENTRY REQUIREMENTS	PROGRESSION
Pathway to Care	There are no formal entry requirements for this course.	<ul style="list-style-type: none"> Accredited Level 1 course within the college or employment. Gaining your GCSE in English and maths will support this transition.
Introduction to Health, Social Care and Children and Young Peoples Services Level 1	A minimum of four GCSEs with the following grades: English at 2 or above and maths at 1 or above and two other GCSEs at 2 or above. A DBS check is also required.	<ul style="list-style-type: none"> Certificate in Health and Social Care Level 2
Health and Social Care Level 2 (BTEC)	A minimum of four GCSEs with the following grades: English at 3 or above and maths at 2 or above and two other GCSEs at 3 or above. A DBS check is also required.	<ul style="list-style-type: none"> Extended Diploma in Health and Social Care Level 3 Health T Level Apprenticeship Employment
Certificate in Health and Social Care Level 2 (NCFE CACHE)	A minimum of four GCSEs with the following grades: English at 3 or above and maths at 2 or above and two other GCSEs at 3 or above. A DBS check is also required.	<ul style="list-style-type: none"> Extended Diploma in Health and Social Care Level 3 Health T Level Apprenticeship Employment
Health T Level Foundation Year Level 2	A minimum of four GCSEs with the following grades: English at 3 or above and maths at 2 or above and two other GCSEs at 3 or above including science. A DBS check is also required.	<ul style="list-style-type: none"> Health: Supporting the Adult Nursing Team Health: Supporting the Mental Health Team
Health: Supporting the Adult Nursing Team T Level Level 3	A grade 5 in English, maths, or science in addition to four grade 4s. You must have English, maths and science as part of this combination, and one of these subjects must be at grade 5. You will also need to have a DBS check.	<ul style="list-style-type: none"> Higher Education Employment Higher apprenticeship
Health: Supporting the Mental Health Team T Level	A grade 5 in English, maths or science in addition to four grade 4s. You must have English, maths and science as part of this combination, and one of these subjects must be at grade 5. You will also need to have a DBS check.	<ul style="list-style-type: none"> Higher Education Employment Higher apprenticeship



SCAN HERE
FOR COURSE
DETAILS:



HOSPITALITY & CATERING

Food, drink and hospitality is a global industry with endless opportunities. Whether your passion lies in the kitchen or front of house, you can learn how to turn that passion into a trade at Kirklees College.

With courses covering a range of culinary specialities and roles, you can dive straight into a course that interests you most. All courses are vocational and focus on making you ready for work, and as a student at Kirklees College, you will contribute to the running of our public restaurant, café and deli, Landings 72, at our Huddersfield Centre.

COURSE LOCATIONS



HUDDERSFIELD
CENTRE

AVERAGE SALARIES

£28,037

RESTAURANT
MANAGERS

£24,059

CHEFS

£21,902

BAKERS



"My favourite thing about my course is that I don't have to sit in a classroom all day. Instead, I get to work in real kitchens, learn hands-on, and explore new topics that I didn't get to study in high school. It's a really refreshing way to learn."

Chris, Professional Cookery Level 2

COURSES	ENTRY REQUIREMENTS	PROGRESSION
Introduction to Culinary Skills Level 1	A minimum of four GCSEs with the following grades: English at 2 or above and maths at 1 or above and two other GCSEs at 2 or above.	<ul style="list-style-type: none"> Professional Cookery NVQ Level 2 Professional Patisserie, Confectionery and Cafe Culture Level 2 Apprenticeship
Professional Patisserie, Confectionery and Cafe Culture Level 2	A minimum of four GCSEs with the following grades: English and maths at 4 or above and two other GCSEs at 4 or above, or a Level 1 relevant vocational qualification.	<ul style="list-style-type: none"> Diploma in Professional Patisserie and Confectionery Level 3 Apprenticeship
Diploma in Professional Patisserie and Confectionery Level 3	Level 2 Patisserie qualification or relevant industry experience.	<ul style="list-style-type: none"> Level 3 or 4 apprenticeship Employment
Professional Cookery NVQ Level 2	A relevant Level 1 qualification and GCSE English and maths grade 4 or above.	<ul style="list-style-type: none"> Professional Cookery Level 3 Employment within the catering industry
Professional Cookery Level 3	A minimum of GCSE English and maths grade 4 or above and a Level 2 relevant vocational qualification.	<ul style="list-style-type: none"> Hospitality Management Employment
Commis Chef Apprenticeship Level 2	GCSE English and maths at grade 3 or above. To start your apprenticeship you must have secured employment that the college has agreed is suitable.	<ul style="list-style-type: none"> Chef de Partie Level 3 Employment
Production Chef Apprenticeship Level 2	GCSE English and maths at grade 3 or above. To start your apprenticeship you must have secured employment that the college has agreed is suitable.	<ul style="list-style-type: none"> Employment
Hospitality Team Member Apprenticeship Level 2	GCSE English and maths grade 3 or above. To start your apprenticeship you must have secured employment that the college has agreed is suitable.	<ul style="list-style-type: none"> Employment
Chef De Partie Apprenticeship Level 3	A relevant level 2 qualification and GCSE English and maths grade 4 or above. To start your apprenticeship you must have secured employment that the college has agreed is suitable.	<ul style="list-style-type: none"> Hospitality Kitchen Management course Employment



SCAN HERE
FOR COURSE
DETAILS:



MOTOR VEHICLE

With the UK and wider world moving towards more sustainable car models, Kirklees College has invested heavily in our Hybrid Electric Vehicle Centre at our Engineering Centre in Huddersfield. Here, alongside other state-of-the-art equipment for light and heavy vehicle maintenance, you will find a range of model EV cars, rigs and equipment that will bring your learning of motor vehicles up to speed with this evolving industry.

If you are joining the department at our Springfield Sixth Form Centre, you will also learn in a fully-functioning motor vehicle workshop, and your course will include work experience and work-based activities, such as visits from local businesses to enhance your practical learning.



**Funded by
UK Government**

COURSE LOCATIONS



SPRINGFIELD
SIXTH FORM
CENTRE



ENGINEERING
CENTRE

Please check the individual course details on our website to see where the course will be taught

AVERAGE SALARIES

£34,233

GARAGE MANAGERS
AND PROPRIETORS

£30,337

VEHICLE BODY
BUILDERS AND
REPAIRERS

£29,504

VEHICLE
TECHNICIANS,
MECHANICS AND
ELECTRICIANS



"My tutors at Kirklees College are lovely and friendly, it helps me enjoy my course. The building is nice and clean, I would recommend Kirklees College to other people."

Bian, Vehicle Maintenance Certificate Level 1

COURSES	ENTRY REQUIREMENTS	PROGRESSION
Entry Level 3 Motor Vehicle	There are no formal entry requirements for this course.	<ul style="list-style-type: none"> After you finish the course, you could be offered the chance to transition to a Level 1 programme within the Motor Vehicle department, or another college course of your choosing. A relevant GCSE in English and maths will support this transition.
Motor Vehicle Level 1	You will need a grade 2 in English and maths GCSE, and/or an Entry 3 Motor Vehicle qualification.	<ul style="list-style-type: none"> Motor Vehicle Level 2 Apprenticeship
Certificate in Vehicle Maintenance Level 2	GCSE grade 3 in English and maths or above.	<ul style="list-style-type: none"> Motor Vehicle Diploma Level 2 Apprenticeship Motor Vehicle T Level Transition Programme
Light Vehicle and Maintenance and Repair Principles Diploma Level 2	Successful completion of the Level 2 Certificate and GCSE English and maths at grade 4 or above.	<ul style="list-style-type: none"> Motor Vehicle apprenticeship Light Vehicle Maintenance and Repair Principles Level 3
Motor Vehicle T Level Foundation Year Level 2	Four GCSEs at grade 3 or above including English and maths.	<ul style="list-style-type: none"> Motor Vehicle T Level Level 3
Light Vehicle Maintenance and Repair Principles Level 2	GCSE grade 3 in English and maths and successful completion of the Level 1 course.	<ul style="list-style-type: none"> Motor Vehicle Level 3 apprenticeship Employment
Auto-care Technician Apprenticeship Level 2	GCSE English and maths grade 3 or above. To start your apprenticeship you must have secured employment that the college has agreed is suitable.	<ul style="list-style-type: none"> Apprenticeship Level 3 Employment
Light Vehicle Service and Maintenance Technician Apprenticeship Level 3	GCSE English and maths grade 4 or above. To start your apprenticeship you must have secured employment that the college has agreed is suitable.	<ul style="list-style-type: none"> Level 4 and work towards becoming an Automotive Master Technician Employment
Heavy Vehicle Service and Maintenance Technician Apprenticeship Level 3	GCSE English and maths grade 4 or above. To start your apprenticeship you must have secured employment that the college has agreed is suitable.	<ul style="list-style-type: none"> Level 4 and work towards becoming an Automotive Master Technician Employment



SCAN HERE
FOR COURSE
DETAILS:



PROCESS MANUFACTURING

Manufacturing is currently enjoying an increased interest as a career choice, and for good reason too! With plenty of pathways available to those who train in Process Manufacturing, getting started in this innovative, creative field is a great idea.

Kirklees College prides itself on being an innovator of the field too, being the first college in England to offer a Level 3 Supply Chain Apprenticeship. All our students are also taught in our state-of-the-art Process Manufacturing Centre (PMC) and learn from industry experts.

COURSE LOCATIONS



PROCESS
MANUFACTURING
CENTRE

AVERAGE SALARIES

£41,761

PRODUCTION AND
PROCESS ENGINEER

£29,560

PRODUCTION,
FACTORY AND
ASSEMBLY
SUPERVISORS

£25,853

FOOD AND DRINK
PROCESS OPERATIVES



"The tutors were very responsive and I could feel that they actually cared about my success, I know if there were any problems at work the college would help me resolve them. I would 100% recommend an apprenticeship for somebody and definitely one at Kirklees College. I have since been promoted at my job I got through the college."

**Harrison, Supply Chain Practitioner
Apprenticeship Level 3**



PROCESS MANUFACTURING

COURSES	ENTRY REQUIREMENTS	PROGRESSION
Food and Drink Maintenance Engineer Apprenticeship Level 3	GCSE English and maths grade 4 or above. To start your apprenticeship you must have secured employment that the college has agreed is suitable.	<ul style="list-style-type: none"> • Further study within the food and drink industry • Employment
Supply Chain Practitioner Apprenticeship Level 3	GCSE English and maths grade 4 or above and a suitable employer. To start your apprenticeship you must have secured employment that the college has agreed is suitable.	<ul style="list-style-type: none"> • Employment



SCAN HERE
FOR COURSE
DETAILS:



SCIENCE

Today's society benefits from so many scientific innovations, including medicines and treatment, technologies, food and the environment. The demand for discovery is constant as we work globally to create a sustainable world with a planet and population that is fit for the future.

When you do a Science course at Kirklees College, you benefit from spending your time in our multi-purpose laboratories with amazing equipment. This includes our brand new anatomage table, a hi-spec digital technology that aims to enhance your understanding of human anatomy, with several cadavers pre-loaded onto the table software to explore and analyse. The table also boasts interactive experiments in a range of core sciences including Biology, Chemistry and Physics and has access to a small range of animal anatomy too.



**Funded by
UK Government**

COURSE LOCATIONS



HUDDERSFIELD
CENTRE

AVERAGE SALARIES

£37,858
PHARMACISTS

£39,305
BIOCHEMISTS
AND BIOMEDICAL
SCIENTISTS

£23,991
LABORATORY
TECHNICIAN



"I came to college in 2020 after spending my high school years being home schooled. I started on Level 1 Applied Science and have progressed to my current Level 3 course. During my time at Kirklees College, I have felt at home and very supported and it is a great feeling to know I am moving forward in the next venture of my educational journey."

Holly-Mae, Science Level 3



COURSES	ENTRY REQUIREMENTS	PROGRESSION
Applied Science Level 1	A minimum of four GCSEs with the following grades: English at 2 or above and maths at 1 or above and 2 other GCSEs at 2 or above including a science subject.	<ul style="list-style-type: none"> Applied Science Level 2 Health and Social Care course
Applied Science Level 2	A minimum of four GCSEs with the following grades: English and maths at grade 3 or above and 2 other GCSEs at 3 or above including a science subject.	<ul style="list-style-type: none"> Laboratory Technician apprenticeship Level 3 Other Level 3 apprenticeship Science T Level - Laboratory Sciences
Science T Level - Laboratory Sciences Level 3	One GCSE grade 5 and four GCSEs grade 4 or above. You must have English, maths and science as part of this combination, and one of these subjects must be at grade 5.	<ul style="list-style-type: none"> Higher Education Apprenticeship Employment
Laboratory Technician Apprenticeship Level 3	<p>A minimum of five GCSEs with the following grades: English and maths at 4 or above and three other GCSEs at 4 or above including a science subject.</p> <p>To start your apprenticeship you must have secured employment that the college has agreed is suitable.</p>	<ul style="list-style-type: none"> Employment in the science industry Higher level apprenticeship

YOUR ONLY
LIMIT IS YOU

SCAN HERE
FOR COURSE
DETAILS:



SPORT & FITNESS

The Sport industry offers a diverse range of careers and Kirklees College's course offer aims to reflect this. Whether you want to train to be a competitive athlete, gym instructor, personal trainer, nutritionist, or gain a broad knowledge of sport and physical education, our courses are a great way to turn your sporting achievements into a valuable career.

All Sports students at Kirklees College are part of our wider Sports Academy and you will become part of the family with your own uniform and identity relating to your course. With an on-site gym and access to specialist outdoor training grounds, there's never a dull moment when you join the KC Sports department.

COURSE LOCATIONS



HUDDERSFIELD
CENTRE

AVERAGE SALARIES

£29,849

LEISURE AND SPORTS
MANAGERS AND
PROPRIETORS

£23,771

SPORTS COACHES

£23,771

FITNESS AND
WELLBEING
INSTRUCTORS



"I enjoy learning about the different factors of being in a gym environment. The Fitness course has given me a lot of opportunities, including going to Aruba for a two-week project and taking part in the College Fitness Games."

Poppie, Level 2 Gym Instruction

SPORT COURSES	ENTRY REQUIREMENTS	PROGRESSION
Sport Level 1	A minimum of four GCSEs with the following grades: English at grade 2 or above maths at grade 1 or above and 2 other GCSEs at grade 2 or above.	<ul style="list-style-type: none"> Sport Leadership and Coaching Level 2 Gym Instruction Level 2
Sport Leadership and Coaching Level 2	A minimum of four GCSEs with the following grades: English at 3 or above and maths at 2 or above and two other GCSEs at 3 or above including PE, or a sports background and interest.	<ul style="list-style-type: none"> Gym Instruction Certificate Level 2 Physical Activity, Health and Sport Therapy Level 3 Physical Activity, Health and Coaching Level 3
Sport and Physical Activity Introductory Certificate Level 3	A minimum of five GCSEs with the following grades: English at 4 or above and maths at 3 or above and three other GCSEs at 4 or above including PE or a sports background.	<ul style="list-style-type: none"> Higher Education Employment
Sport, Health and Physical Activity - Sport Science Therapy Level 3	A minimum of five GCSEs with the following grades: English at 4 or above and maths at 4 or above and three other GCSEs at 4 or above including PE and science.	<ul style="list-style-type: none"> Higher Education Employment in the industry
Sport, Health and Physical Activity – Sports Coaching Level 3	A minimum of five GCSEs with the following grades: English at 4 or above and maths at 3 or above and three other GCSEs at 4 or above including PE or a sports background.	<ul style="list-style-type: none"> Higher Education Employment in the industry

FITNESS COURSES	ENTRY REQUIREMENTS	PROGRESSION
Gym Instruction Certificate Level 2	A minimum of five GCSEs with the following grades: English at 4 or above and maths at 3 or above and three other GCSEs at 4 or above. Candidates need to have a basic understanding of how the human body functions and have experience using the gym.	<ul style="list-style-type: none"> Personal Trainer Diploma Level 3 Sport and Physical Activity Introductory Certificate Level 3
Personal Trainer Diploma Level 3	Certificate in Gym Instruction Level 2.	<ul style="list-style-type: none"> Employment in the fitness industry
Personal Trainer Apprenticeship Level 3	Gym Instruction Level 2 or other related qualification and maths and English GCSE at grade 4/C. To start your apprenticeship you must have secured employment that the college has agreed is suitable.	<ul style="list-style-type: none"> Employment as a Personal Trainer Related Higher Education courses



SCAN HERE
FOR COURSE
DETAILS:



TRAVEL & TOURISM

There are many career options in the Travel and Tourism industry. You may be interested in becoming a resort representative, ground staff, or you've set your sights on becoming cabin crew. Maybe it's the marketing and business aspects of the industry that floats your boat. Whatever your ambitions, our Travel and Tourism team is here to guide you through your study journey.

You will be expected to adhere to the professional standards of this industry from day one at college, and will be required to wear a uniform which will prepare you for working in industry. If you are doing a cabin crew or aviation course with us, you will also have access to our mock air cabin and will learn core aviation skills at college, which will help you stand out from the crowd when you apply for roles in the sector.

COURSE
LOCATIONS



HUDDERSFIELD
CENTRE

AVERAGE
SALARIES

£24,028
TRAVEL AGENTS

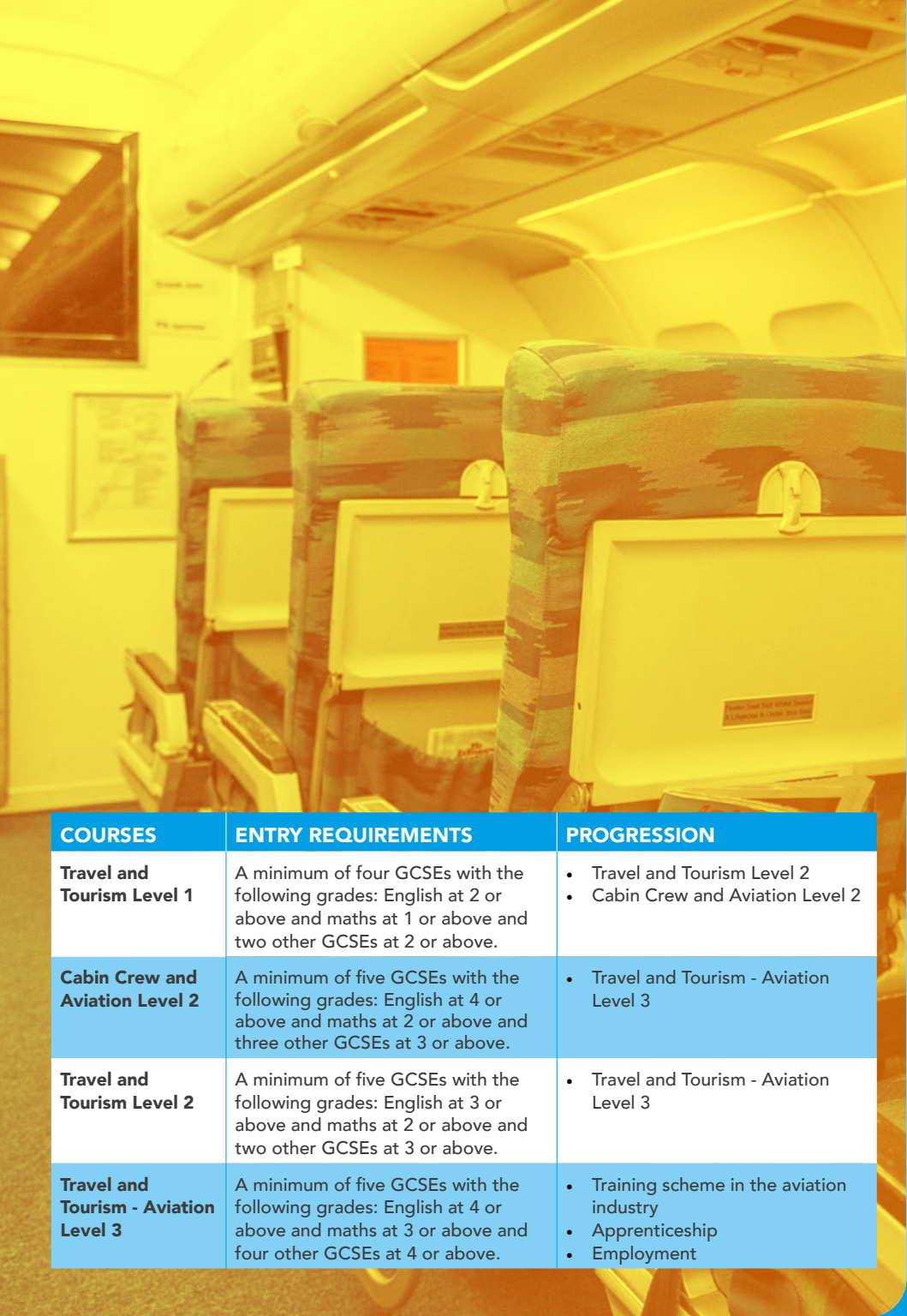
£17,615
AIR TRAVEL
ASSISTANTS

£32,252
RAIL TRAVEL
ASSISTANTS



"College life is ever changing meeting new people and making new friends. The trips at college are so fun and I will always say to go on one when you get the chance, I went to Edinburgh and had a blast, the organisers did an amazing job."

Taz, Level 2 Air Cabin Crew



COURSES	ENTRY REQUIREMENTS	PROGRESSION
Travel and Tourism Level 1	A minimum of four GCSEs with the following grades: English at 2 or above and maths at 1 or above and two other GCSEs at 2 or above.	<ul style="list-style-type: none">• Travel and Tourism Level 2• Cabin Crew and Aviation Level 2
Cabin Crew and Aviation Level 2	A minimum of five GCSEs with the following grades: English at 4 or above and maths at 2 or above and three other GCSEs at 3 or above.	<ul style="list-style-type: none">• Travel and Tourism - Aviation Level 3
Travel and Tourism Level 2	A minimum of five GCSEs with the following grades: English at 3 or above and maths at 2 or above and two other GCSEs at 3 or above.	<ul style="list-style-type: none">• Travel and Tourism - Aviation Level 3
Travel and Tourism - Aviation Level 3	A minimum of five GCSEs with the following grades: English at 4 or above and maths at 3 or above and four other GCSEs at 4 or above.	<ul style="list-style-type: none">• Training scheme in the aviation industry• Apprenticeship• Employment



SCAN HERE
FOR COURSE
DETAILS:



UNIFORMED PROTECTIVE SERVICES

If you see yourself protecting and serving the public in your career, then a Uniformed Protective Services course is for you. Our courses open up a range of career pathways, from the emergency services, security roles and progression into the armed forces.

Our tutors have had fantastic careers within the Uniformed Protective Services. They will pass on their hands-on knowledge and experience to you as you train to enter the service of your choice. You will increase your general fitness levels and physical endurance whilst developing your problem-solving skills, leadership skills and effective communication.

COURSE LOCATIONS



HUDDERSFIELD
CENTRE

AVERAGE SALARIES

£51,016

SENIOR OFFICERS IN
FIRE, AMBULANCE,
PRISON AND RELATED
SERVICE

£45,206

PARAMEDICS

£40,144

POLICE OFFICERS



"I joined Kirklees College because of the course, it allowed me to practise and get ready to join the services. My favourite part of the course is the flexibility and the gym sessions we do.

My tutors are very friendly and welcoming, I am always pushed to get the best grades possible. I am hoping to join the Royal Marines after leaving college. The main reason I would recommend Kirklees College is the friendliness of the staff and fellow students."

Darcy, Uniformed Protective Services Level 3



COURSES	ENTRY REQUIREMENTS	PROGRESSION
Introduction to Uniformed Services Level 1	A minimum of four GCSEs with the following grades: English at 2 or above and maths at 1 or above and two other GCSEs at 2 or above.	<ul style="list-style-type: none"> Physical Preparation for Entry to the Uniformed Protective Services Level 2
Physical Preparation for Entry to the Uniformed Protective Services Level 2	A minimum of four GCSEs with the following grades: English at 3 or above and maths at 2 or above and two other GCSEs at 3 or above.	<ul style="list-style-type: none"> Uniformed Protective Services Level 3
Introductory Uniformed Protective Services Level 3	Three GCSEs at grade 4 or above, including English and maths at a minimum of grade 3.	<ul style="list-style-type: none"> Uniformed Protective Services Level 3 Employment
Uniformed Protective Services Level 3	A minimum of five GCSEs with the following grades: English and maths at grade 4 or above and three other GCSEs at grade 4 or above.	<ul style="list-style-type: none"> Direct entry into the public services industry Degree level courses



SCAN HERE
FOR COURSE
DETAILS:



ACCESS TO HIGHER EDUCATION

Access to HE courses provide a good foundation in the knowledge and skills required for studying at university level, so that students are confident and well prepared when they go on to higher education.

Our Access to HE courses are designed to give students relevant academic subject knowledge and the opportunity to learn how to approach study at university-level and develop techniques.

COURSE LOCATIONS



HUDDERSFIELD
CENTRE



PIONEER
HIGHER SKILLS
CENTRE



ONLINE

Please check the individual course details on our website to see where the course will be taught

OUR PREVIOUS STUDENTS HAVE GONE ON TO STUDY:

- PHARMACOLOGY
- PHYSIOTHERAPY
- CRIMINOLOGY
- SOCIAL WORK
- BIOMEDICAL SCIENCES

AT UNIVERSITIES INCLUDING:

- MANCHESTER METROPOLITAN UNIVERSITY
- UNIVERSITY OF LEEDS
- UNIVERSITY OF BIRMINGHAM
- UNIVERSITY OF LIVERPOOL
- UNIVERSITY OF HUDDERSFIELD



"The Access course at Kirklees College offered progression and development into a career. The level of support we get on the course is my favourite part, we also get one to one sessions, financial support and counselling support. I will be attending university after finishing up at Kirklees College. I would recommend the college because of the diversity and range of courses to choose from."

Terri, Access to HE Health Science Professions Level 3

COURSES	ENTRY REQUIREMENTS	PROGRESSION
Access to HE Health Science Professions Level 3	A minimum of GCSE English and maths grade C/4 or above and ideally science grade C/4 or above. Please note we will need to see certificates/evidence that you have achieved the required GCSE grades. You will not be able to undertake the course without this. All applicants must be aged 19+.	<ul style="list-style-type: none"> • Midwifery, nursing, ODP, Paramedic science, Biology, biomedical sciences plus a number of other degree courses in related health science subjects.
Access to HE Art And Design Level 3	A minimum of two GCSEs at grade C/4 or above in English and maths or equivalent and a portfolio of artwork. All applicants should be aged 19+.	<ul style="list-style-type: none"> • Art and Design related higher education courses.
Access to HE Humanities & Social Sciences Level 3	A minimum of GCSE English and maths grade C/4 or above. Please note we will need to see certificates/evidence that you have achieved the required GCSE grades. You will not be able to undertake the course without this. All applicants must be aged 19+.	<ul style="list-style-type: none"> • Social work, sociology, youth work, psychology, criminology plus a number of other degree courses in related social science subjects.
Progression to Access To HE Level 2	Either English or maths at grade 4 along with three other grade 4s or a Level 1 qualification with English and maths. Applicants must be 19+.	<ul style="list-style-type: none"> • Access to HE Level 3 Diplomas depending on achievement of GCSE English and maths.
Progression to Access FE and Employment Level 1	A minimum of three GCSEs with the following grades: English and maths at grade E/2 or above and one other GCSEs at grade E/2 or above. Applicants must be 19+.	<ul style="list-style-type: none"> • Progression to Access HE Level 2 • Access to HE Level 3 courses (dependent on achievement of GCSE English and/or maths) • Other college courses, apprenticeships and employment
Access to HE Business Level 3	A minimum of GCSE English and maths grade C/4 or above. Applicants must be 19+.	<ul style="list-style-type: none"> • Degree course in a related subject • Employment
Access to HE Computing Level 3	A minimum of GCSE English and maths grade C/4 or above. Applicants must be 19+.	<ul style="list-style-type: none"> • Degree course in a related subject • Employment
Access to HE Science Level 3	A minimum of GCSE English and maths grade C/4 or above. Applicants must be 19+.	<ul style="list-style-type: none"> • Degree course in a related subject • Employment
Access to HE Diploma Law and Business Level 3	A minimum of GCSE English and maths grade C/4 or above. Applicants must be 19+.	<ul style="list-style-type: none"> • Degree course in a related subject • Employment

HOW TO APPLY FULL-TIME COURSES AND T LEVELS

You can apply for all our full-time courses online using our website. The deadline for applications is **Wednesday 30 April 2025** to start a full-time course in September. You may miss out on a place if you do not apply before the deadline.

HOW TO COMPLETE YOUR ONLINE APPLICATION:

- You will need to complete this in one session – you can't save and go back to it
- Make sure you have your full address, postcode, email address and telephone number to hand to put into the form
- Some courses are available at different centres. Make sure that you click on the centre you want to study at
- You will need to put your predicted or actual GCSE grades and subjects on the form
- You will need to provide the name and contact details of someone who will provide you with a reference

Please note that references can't be from a family member. If you are still in school then we will approach your school for a reference.

APPRENTICESHIPS:

APPLYING FOR AN APPRENTICESHIP THROUGH COLLEGE

- If you know the employment area you want to complete an apprenticeship in (e.g. plumbing) then you can apply direct using our online application
- The college will then invite you for an interview to discuss the apprenticeship and help you find a suitable role. When you are matched with an employer, you are then invited to an interview with the company

SCAN HERE
TO FIND OUT
MORE:



APPLYING FOR A SPECIFIC APPRENTICESHIP VACANCY THROUGH COLLEGE

- Look on our website for the latest vacancies www.kirkleescollege.ac.uk/apprenticeships
- If you find one you are interested in, you can apply for that job by following the link on the website
- You will come to college for an interview and if successful you will have an interview with the company
- When you apply for an apprenticeship with us, where possible you will have the offer of a place on a full-time course as a back-up. If you do not find an employer before enrolment, you can start on the full-time course

APPLYING DIRECTLY TO THE COMPANY

- You can look and apply for vacancies through company websites, the local press, at the national apprenticeship service website www.findapprenticeship.service.gov.uk, or by sending your CV directly to local companies

USEFUL CONTACTS:

APPLICATIONS:

Call: 01484 437033

Email: applications@kirkleescollege.ac.uk

INFORMATION TEAM:

Call: 01484 437070

Email: info@kirkleescollege.ac.uk

SCAN HERE
TO FIND OUT
MORE:



SUPPORTING YOU

At Kirklees College, we have high expectations of attendance, behaviour and commitment and we provide support to all our students to help them achieve the best possible outcomes.

You will have access to a range of student support services including:

- Pastoral Mentors and Mentors for Apprentices
- Personal Development Tutors
- Work Placement Officers
- Care Coordinators for Care Experienced young parents, young carers and estranged students
- Financial support
- Careers advice
- Safeguarding
- Confidential counselling
- Chaplaincy for all faiths and none
- SEND support
- Students' Union and Student Voice
- Learning Resource Centre

We work with employers, parents and carers to ensure you get the support you need to achieve your goals.

STUDENTS' UNION



All students are automatically members of the KC Students' Union (SU). Becoming an active member of the KC Students' Union is a great way to enrich your college experience and will give you skills beyond the classroom.

The SU is run by our elected student executive team. Our SU represents the needs of the student body by engaging with college management, Student Voice and our Enrichment Team, championing the academic needs and social interests of students and the challenges and issues that affect our student population.

YOUR VOICES 4 ACTION



At Kirklees College, your student voice is important to us. Using our active Students' Union, you will be able to voice your thoughts and opinions on what your student experience will look at whilst at college. We have Student Class Reps and Youth Voice Champions that work with local councils and Student Ambassadors that focus on important topics such as mental health. Giving students the first taste of democracy and citizenship by allowing them to directly solicit feedback from their peers and taking an active in making college life their own.

SCAN HERE
TO FIND OUT
MORE:



ENRICHMENT AND TRIPS

Learning extends beyond the classroom and at Kirklees College, we pride ourselves on offering a wide range of Enrichment activities for students, including clubs and trips. Take a look at where our KC Students have been in the last year!



LONDON



ARUBA



SWEDEN



VALENCIA



SOUTH AFRICA



PROJECT SEARCH

Project SEARCH is a full-time one-year supported internship programme. It is a highly successful transition to work initiative for students aged 18-24 with a learning disability and/or Autism. It is targeted at students whose goal is competitive employment within the local community.

Kirklees College has partnered with Kirklees Council, Dewsbury District Hospital, REAL Employment and C&K Careers to facilitate the licensed DFN Project SEARCH course.

Throughout the year, Project SEARCH interns have three work site placements to help build the skills required gain and maintain employment in their chosen sector. Placements are matched to their career aspirations, skills and personal development goals. Their tutor and Job Coach will work alongside them to support them in their development towards meaningful employment.

Over 60% of students graduate with employment of 16 hours or more. Past

students have gone to work in business support, IT and hospitality roles within Kirklees College, Kirklees Council and Dewsbury Hospital, as well as other students gaining employment as Health Care Assistants, Activities Co-ordinator, Booking Clerks, bus drivers and many more!

To find out more about the placements on offer with Project SEARCH and find out how to apply, scan the QR code below.

SCAN HERE
TO FIND OUT
MORE:



SCAN HERE
TO FIND OUT
MORE:



XPLOER PROGRAMME

The Xplorer Programme is designed for students who are leaving school and need some time to focus on their English and maths, employability skills and personal development.

The programme delivers a personalised, inclusive and safe learning environment where you will find your learning challenging, enjoyable and thought-provoking. A strong focus on personal goals and how to overcome barriers to learning will be embedded in all aspects of the course.

You will work independently and as part of a team on a variety of social enterprise and charity activities to develop yourself in readiness for life and work. This will include participating in college and community events, using a kitchen space to budget and prepare meals and running a small business.

Students on Xplorer will have underpinning careers guidance to support future career progression

decisions and where required will engage in an individual work placement. You will also learn about where to access different sources of help and support, identify your own strengths, skills, qualities and interpersonal skills and how these can be transferred into jobs or further education.

The Xplorer programme is designed to meet the individual needs of students with a strong emphasis on developing personal, social, emotional and employability skills. The team offer a unique opportunity for learners with social, emotional or mental health (SEMH) needs to engage in learning within a nurtured environment and provides support to students to re-engage in their learning and prepare for next steps.



SCAN HERE
TO FIND OUT
MORE:



SPORTS ACADEMY

We are proud to offer a performance Sports Academy that gives 16-19 students the chance to study at college whilst training and competing in Rugby and Football. The academies are designed to support the development of players technical and tactical skills.

KIRKLEES COLLEGE SPORTS ACADEMY OFFERS:

- A top-class training programme
- The best local training facilities
- Coaching from high-profile top-quality coaches (UEFA standard)
- Player development plans
- Strength and Conditioning programmes
- Links to professional and semi-professional clubs
- Support for students applying for scholarships in the USA

WATERFRONT GYM

Kirklees College has its own gym and fitness studio at our Huddersfield Centre. Rock Up and Train sessions are available to students for free (depending on timetable and availability).

Training guidance from our experienced instructor is available as part of the Rock Up and Train sessions. We also offer an extensive exercise class timetable for those interested in group training.

SCAN HERE
TO FIND
OUT MORE:



SCAN HERE
TO FIND OUT MORE
ABOUT CENTURY:



MATHS & ENGLISH

At Kirklees College, all our students are encouraged to improve their current maths and English skills. We ask all students to complete 30 hours of online English and maths, this is regardless of your incoming grades.

If you are joining us without a grade 4 or above in GCSE maths and / or English, you will continue to study for these qualifications alongside your main college course.

You will use Century, an online portal and support tool with tailored lessons and tasks in class to help you improve your grades.

When you start at college, your maths / English tutors will explain Century to you fully and you will be set up with an online account.



SCAN HERE
TO BOOK A
PLACE:



TASTER SESSIONS

Taster sessions are a great way to find out about a subject area and decide if it's the right option for you.

Sessions are targeted at Years 9-13 and usually take place after school where possible. Sessions are booked on a first come, first-served basis and are free to take part in. Sessions will only run if enough students sign up.

If you have any questions, please get in touch with the Student Recruitment Team on **01484 437092** or email **sturec@kirkleescollege.ac.uk**.

**WHAT
WILL
YOU
BE?**

FIND OUT AT ONE OF OUR

OPEN DAYS

**COME VISIT US ON ONE OF OUR OPEN DAYS
HAPPENING ACROSS THE YEAR:**

NOVEMBER 2024

All Huddersfield Centres:

Saturday 16 November

10.30am – 1pm (last entry 12.30pm)

All Dewsbury Centres:

Saturday 23 November

10.30am – 12.30pm (last entry 12pm)

JANUARY 2025

All Huddersfield Centres:

Saturday 18 January

10.30am – 1pm (last entry 12.30pm)

All Dewsbury Centres:

Saturday 25 January

10.30am – 12.30pm (last entry 12pm)

MARCH 2025

All Huddersfield Centres:

Saturday 15 March

10.30am – 1pm (last entry 12.30pm)

All Dewsbury Centres:

Saturday 22 March

10.30am – 12.30pm (last entry 12pm)

JUNE 2025

All Huddersfield Centres:

Tuesday 24 June

5pm – 7pm (last entry 6.30pm)

All Dewsbury Centres:

Wednesday 25 June

5pm – 7pm (last entry 6.30pm)



www.kirkleescollege.ac.uk

