



WELCOME TO THE KC COMMUNITY

EDUCATION AND EARLY YEARS

HELLO! FROM THE CURRICULUM AREA MANAGERS

Welcome to the Education and Early Years department at Kirklees College. We are JP and Rachel – JP is manager at our Dewsbury centres and Rachel manages the area at our Huddersfield Centre. We are delighted you have chosen to study an Education and Early Years course. On your course, you will have the chance to develop your childcare skills and get ready for your career in this wonderful industry. We look forward to meeting you in September.



Scan this QR code
to watch our video,
**Together We Are
Mighty!**



WHERE WILL YOU BE STUDYING?

**Huddersfield
Centre**
Scan to take
a virtual tour!



**Springfield Sixth
Form Centre**
Scan to take
a virtual tour!



**Pioneer Higher
Skills Centre**
Scan to take
a virtual tour!



KEY INFORMATION AND OPPORTUNITIES

During your time with us in the Education and Early Years department, your learning experience will be enriched with trips to Cliffe House to develop your outdoor schooling knowledge and skills, a trip to Yorkshire Wildlife Park to apply your learning to areas of development and a trip to London to explore the Museum of Childhood. You may be asked to pay for these trips, but financial support is available.

We also have on-site facilities that replicate real-life work environments to give you realistic, hands-on experience. These include our mock nursery for Level 3 students at our Pioneer Higher Skills Centre.

You will take part in activity planning sessions every week to support you to be a successful practitioner when out in industry practice. You will also receive teaching from the Kirklees Early Years Team with the most up-to-date training, information and knowledge related to Early Years Foundation Stage (EYFS) practices.

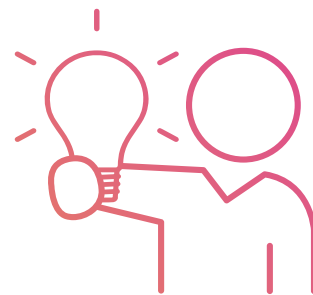
If you are a rugby or a football player, you can also combine your studies with playing your sport by becoming a member of our Sports Academies. Keep an eye on your email account for information about academy trials.



MEET OUR STUDENTS!

Laura, Education and Childcare T Level:

"During my time at Kirklees College, I have progressed from Level 2 to T Level. My tutors have been consistently supportive and are helping me work towards my goal of becoming a Level 3 Practitioner. I find joy in working with children, planning activities and demonstrating them before implementing these in placement."



CAREER PROGRESSION

Careers in the Education and Early Years sector are varied and there are more roles available in the sector than ever. Potential career paths include teaching, nursery management, SEND support roles and teaching assistant roles in early years and primary settings. We support our students to prepare for their future careers through interview and CV skills workshops, embedding professional conduct into the curriculum and work placement opportunities.



WORK EXPERIENCE

Our Education & Early Years courses have a significant amount of work placement hours, with our T Levels students expected to complete 750 hours of work placement during their course. As part of our Employability Pledge, you will have work experience embedded into your timetable. If you are on a Level 2 or 3 course, you will work with a dedicated Work Experience Coach, who will help you find a placement suited to your course or chosen career. Alternatively, you will complete work experience to achieve a Careers and Personal Development Passport Award.



SUPPORTING YOU

At Kirklees College, we are committed to supporting all our students wherever we can. We offer a wide range of specialist support which is carefully allocated to ensure help is accessible to everyone who needs it.

Types of support on offer:

- Financial
- SEND
- Counselling
- Sexual Harassment – Call It Out
- Exam Support
- Careers & Employment
- Health and Wellbeing
- Support for Care Leavers and Children Looked After
- Support for Young Parents, Young Carers and Estranged Students



VISIT US BEFORE SEPTEMBER!

WELCOME DAYS

Scan this QR
code to find
out more



OPEN DAYS

HUDDERSFIELD CENTRES

Tuesday 25 June
5pm - 7pm
(Last entry 6.30pm)

DEWSBURY CENTRES

Wednesday 26 June
5pm - 7pm
(last entry 6.30pm)

Scan this QR code
to find out more



STAY CONNECTED



www.kirkleescollege.ac.uk