

WELCOME TO HEALTH AND SOCIAL CARE AT KIRKLEES COLLEGE

WELCOME FROM THE HEAD OF FACULTY

“Welcome to the Health and Social Care department at Kirklees College. We are so pleased you have decided to apply for a Health and Social Care course. Whether you’re interested in nursing, midwifery, teaching or another career, our courses are a great way to develop your knowledge of the care sector and help you decide what you want to do in future. ”

Mel



COURSES IN THIS AREA

- Introduction to Health and Social Care and Children and Young People’s Settings Level 1
- Health and Social Care Level 2 (BTEC)
- Health and Social Care Level 3
- Health and Social Care Transition to T Level
- Health and Social Care: Supporting the Adult Nursing Team T Level



WHERE WILL YOU BE STUDYING?

Huddersfield Centre is in the town centre and is only a short walk from the bus and train stations. You will have access to the college gym for free, a Starbucks, large refectory and cash machine. Set across two floors, the LRC has plenty of course textbooks and computers. Don’t be put off by the size of the building, Health and Social Care classes usually take place in Block A on floor 2. We also have our brand-new mock hospital ward, with state-of-the-art learning facilities specifically designed for our T Level course. There is a breakout area on each floor with vending machines and space to socialise.

If you are not studying on a T Level programme, then you will study at **Springfield Sixth Form Centre** in Dewsbury. This centre is for 16 – 18 students only. This small centre has a real buzz about it and is only a short walk from both the bus and train stations. There is a refectory service, LRC and access to computers for work.



IT STARTS WITH YOU

ADDITIONAL INFORMATION

Your timetable will usually be 16 hours a week. If you don't have GCSE grade 4 in English and maths then resitting these will be built into your study programme.

You can download Microsoft software for free and access free Wi-Fi at college. If you need to access IT equipment, you can borrow devices from the LRC.

All 16 – 18 students have the opportunity to join our Sports Academy, if your timetable allows. We have a Football Academy and Rugby Academy, which both offer you the chance to train in your chosen field alongside your studies. To find out more about the different academies and trials, head to our website.

To see our centres or learn more about the Sports Academy, scan this QR code.



MEET OUR STUDENTS

“ Health and Social Care is a great course to take as it allows a safe space to share experiences, build transferable skills and provides an opportunity to work in a Health or Social Care environment. I aspire to become a children's social worker once I have passed this course. I have been well supported and received great advice from my tutors regarding college work and generally. If you are a caring person wishing to excel, I'm sure this course is for you. ”

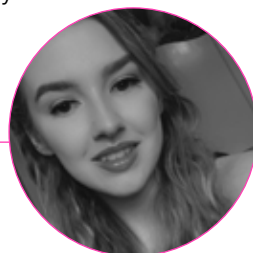
Emily



MEET ONE OF OUR SUBJECT TUTORS

“ My name is Georgia and I am a lecturer on the BTEC Level 3 Extended Diploma in Health and Social Care. My background is in Behavioural Science, focusing on social factors that affect human health, such as race, gender, sexuality and social class. Our courses are available across Levels 1, 2 and 3 and we also offer a T Level in Supporting the Adult Nursing Team, which was specifically designed with colleagues from the NHS and University of Huddersfield. As a team, we will make sure that you have the support and encouragement you need to succeed. We look forward to serving you the best education you need to fulfil your aspirations! ”

Georgia



FINANCIAL SUPPORT



We can support you with:

- Applying for bursaries if you're eligible
- Buying uniform and kits
- Free college meals
- Support with travel costs – you can apply for a travel pass before you start or collect a form from college



STUDENT SUPPORT

We have a wide range of support available including:

- Dedicated Personal Development Coach and Pastoral Mentor. Your Personal Development Coach will help you in tutorial sessions to work on our Personal Development Programme, while your Pastoral Mentor will be on hand to offer 1:1 support if and when you need it
- Additional learning support. This is available for students with specialist educational needs and disabilities and is delivered in various forms according to an individual's assessed needs or provisions within an Education and Health Care Plan (EHCP)
- Counselling service
- Careers advice

To find out more about our financial and student support, please scan the QR code



WORK PLACEMENT

As part of our Employability Pledge at college, all our 16 – 18 study programme students will have the opportunity to complete work experience and undertake a work placement during their time at college. You will work with a dedicated Work Experience Coach, who will help you find a placement suited to your course or chosen career, or complete work experience to achieve a Careers and Personal Development Passport Award.

If you have chosen to study a T Level, you will need to complete 315 hours of work placement during your two years of study.

Health and Social Care courses have compulsory work placement built into the qualification at Level 2 (60 hours) and 3 (100 hours). All T Level students will complete 315 hours of work placement. We have a dedicated team who will work with you to help you find suitable placements in a variety of work settings.



CAREER PROGRESSION

Most of our students choose to go to university once they have completed their Level 3 course. We have strong links with local universities to support progression with students going into a range of careers, including:

- Nursing
- Midwifery
- Teaching
- Social Work
- Social Care
- Criminology
- Psychology
- Youth and Community Works
- ODP (Operation Department Practitioner)



WELCOME DAYS

We would also like to invite you to a Welcome Day at your chosen centre in June. This is a great opportunity to come in and see where you will be learning in September, find out more about our facilities, your course and meet tutors and fellow new students. You will be sent more information shortly.

The Welcome Days are:

Huddersfield Centre: 22 June

Springfield Sixth Form Centre: 28 June



OPEN

DAYS

Our Open Days provide information about the facilities and support available at college, as well as offer parents / carers and applicants the opportunity to ask any questions about starting a course with us.

The dates for our Summer Open Days are:

ALL HUDDERSFIELD CENTRES

WEDNESDAY 28 JUNE

5PM – 7PM (last entry 6.30pm)

ALL DEWSBURY CENTRES

TUESDAY 27 JUNE

5PM – 7PM (last entry 6.30pm)

OPEN DAYS - Scan the QR code to find out more



If you would like to speak to a tutor or have any questions about your course or application, please email applications@kirkleescollege.ac.uk

Enrolment will be in August. More information will be sent out closer to the time.

STAY CONNECTED



www.kirkleescollege.ac.uk