

WELCOME TO TRAVEL AND TOURISM AT KIRKLEES COLLEGE



WELCOME FROM THE CURRICULUM AREA MANAGER

“Hi, my name is Elona and I am the Curriculum Area Manager for Travel and Tourism at Kirklees College. We are delighted you have decided to study with us and can't wait to meet you in September. Travel and Tourism is an exciting, innovative industry with a wide variety of careers available to you once you complete your studies. We have great links with employers across the industry here at college, so you will have the chance to gain valuable work experience too.”

Elona



COURSES IN THIS AREA

- Introduction to Travel and Tourism Level 1
- Air Cabin Crew Level 2
- Travel and Tourism Level 2
- Travel and Tourism Level 3



WHERE WILL YOU BE STUDYING?

Huddersfield Centre

Huddersfield Centre is in the town centre and is just a short walk from the bus and train stations. You will have access to the college gym for free, a Starbucks, large refectory and cash machine. Set across two floors, the LRC has plenty of course textbooks and computers.

On the second floor of the building, there is a mock air cabin that has the interior plan of a Boeing and a check-in desk that acts as a realistic learning environment. All Travel and Tourism students get to spend time in this fantastic learning facility.



IT STARTS WITH YOU

ADDITIONAL INFORMATION

On the Air Cabin Crew course, you will need to wear a uniform which is black skirt/trousers and a jacket with white shirt, scarf and name badge. Your scarf and name badge can be purchased through our online store. Your timetable will usually be 16 hours a week. If you don't have GCSE grade 4 in English and maths then resitting these will be built into your study programme.

The department has excellent links with local employers, including Jet2 and Transpennine Express who regularly come into college to give talks and offer advice to students regarding progression and offer work placements. All our staff have worked around the world in the travel industry.

You can download Microsoft software for free and access free Wi-Fi at college. If you need to access IT equipment, you can borrow devices from the LRC.

All 16 – 18 students have the opportunity to join our Sports Academy, if your timetable allows. We have a Football Academy and Rugby Academy, which both offer you the chance to train in your chosen field alongside your studies. To find out more about the different academies and trials, head to our website.

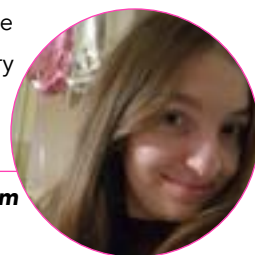
To see our centres or learn more about the Sports Academy, scan this QR code.



MEET OUR STUDENTS

“My time at college has been fantastic. I have always received the support I need from my tutors and Pastoral Mentor. Being at college has allowed me to achieve my goals by preparing me for my career. With the help of my very knowledgeable tutors, I gained a lot of useful knowledge and I have built my confidence. I have the best time at college learning about the Travel and Tourism industry and I am excited to start working as Cabin Crew for Jet2 in September.”

Martyna, Level 3 Travel and Tourism



MEET ONE OF OUR SUBJECT TUTORS

“Hi, my name is Claire and I am one of the Travel and Tourism lecturers at Kirklees College. I have worked at Kirklees College for 16 years and I teach across all the travel, tourism and aviation courses. Before I started teaching, I worked in hotels, as a bar manager in Hong Kong and as a campsite representative in France before going to university to study tourism. The best part of my job is seeing students exceed their expectations and progress either into work or higher education.”

Claire



FINANCIAL SUPPORT



We can support you with:

- Applying for bursaries if you're eligible
- Buying uniform and kits
- Free college meals
- Support with travel costs – you can apply for a travel pass before you start or collect a form from college



STUDENT SUPPORT

We have a wide range of support available including:

- Dedicated Personal Development Coach and Pastoral Mentor. Your Personal Development Coach will help you in tutorial sessions to work on our Personal Development Programme, while your Pastoral Mentor will be on hand to offer 1:1 support if and when you need it
- Additional learning support. This is available for students with specialist educational needs and disabilities and is delivered in various forms according to an individual's assessed needs or provisions within an Education and Health Care Plan (EHCP)
- Counselling service
- Careers advice

To find out more about financial and student support, scan this QR code



WORK PLACEMENT

As part of our Employability Pledge at college, all our 16 – 18 study programme students will have the opportunity to complete work experience and undertake a work placement during their time at college. You will work with a dedicated Work Experience Coach, who will help you find a placement suited to your course or chosen career, or complete work experience to achieve a Careers and Personal Development Passport Award.



CAREER PROGRESSION

On successful completion of your qualification, you could progress to higher education at university or alternatively enter employment within the travel and tourism industry.

You will be given many opportunities to learn about different types of employment options, including working at holiday parks, travel agencies, cruise lines, airlines, coach and train operators and airlines.

Some of our students have progressed to university to study the following courses:

- **Business Management**
- **International Business Management**
- **Tourism Management**



WELCOME DAYS

We would also like to invite you to a Welcome Day at your chosen centre in June. This is a great opportunity to come in and see where you will be learning in September, find out more about our facilities, your course and meet tutors and fellow new students. You will be sent more information shortly.

The Welcome Day is:
Huddersfield Centre: 28 June



OPEN DAYS

Our Open Days provide information about the facilities and support available at college, as well as offer parents / carers and applicants the opportunity to ask any questions about starting a course with us.

The dates for our Summer Open Days are:

ALL HUDDERSFIELD CENTRES

WEDNESDAY 28 JUNE

5PM – 7PM (last entry 6.30pm)

**OPEN DAYS - Scan the
QR code to find out more**



If you would like to speak to a tutor or have any questions about your course or application, please email **applications@kirkleescollege.ac.uk**

Enrolment will be in August. More information will be sent out closer to the time.

STAY CONNECTED



www.kirkleescollege.ac.uk