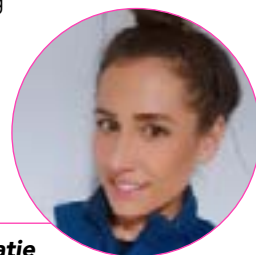


# WELCOME TO

# UNIFORMED PROTECTIVE SERVICES AT KIRKLEES COLLEGE

## WELCOME FROM THE CURRICULUM AREA MANAGER

“Hi, my name is Katie and I am the Curriculum Area Manager for Uniformed Protective Services. Congratulations on getting a place in the department, I am really looking forward to meeting you in September. The department continues to grow in popularity with more young people showing an interest in joining the armed or protective services. We are proud to have links with all the services to support our students' progression into their chosen career.”



**Katie**

## COURSES IN THIS AREA

- Introduction to Uniform Services Level 1
- Physical Preparation for Entry to the Uniformed Protective Services Level 2
- Teamwork, Expeditions and Behaviours for Uniformed Protective Services Level 3
- Uniformed Protective Services (Emergency/Military Strands) Level 3



## WHERE WILL YOU BE STUDYING?

### Huddersfield Centre

Huddersfield Centre is in the town centre and is just a short walk from the bus and train stations. Students at this centre have free access to the college gym, a Starbucks, large refectory and cash machine. Set across two floors, the LRC has access to plenty of course textbooks and computers.

As part of the Uniformed Protective Services department, you will also have access to facilities at Leeds Road Sports Complex, Huddersfield Leisure Centre and Huddersfield University to support you in your studies.



**IT STARTS WITH YOU**

## ADDITIONAL INFORMATION

On this course, you will have the opportunity to undertake relevant work placements and attend guest talks and visits with different services, such as West Yorkshire Police and the Army. Students who choose to focus on the Army will have the chance to partake in a one-week residential. You will also participate in voluntary projects with local charities and services.

You will be required to purchase a uniform. A full bundle costs £155 which can be funded through the student bursary depending on your financial situation. You will also need to pay an additional course contribution towards trips and visits.

Your timetable will usually be 16 hours a week. If you don't have GCSE grade 4 in English and maths then resitting these will be built into your study programme.

You can download Microsoft software for free and access free Wi-Fi at college. If you need to access IT equipment, you can borrow devices from the LRC.



## SPORTS ACADEMY TRIALS

As a member of the Uniformed Protective Services, have you thought about joining our Sports Academy?

It is open to male and female students, and you can choose either the Football or Rugby League.

The Football Academy compete in the top AoC college league in the region and run a programme at the 3G training centre that includes strength and conditioning, video analysis and physio support. The team benefits from an expert UEFA licensed A and B coach who played at professional level for over 10 years.

The Rugby League academy is run in partnership with Huddersfield Giants, and you will receive coaching from their staff, as well as the opportunity to train and play with Giants Academy players. Players will compete in the National Premier League.

Our Rock Up and Train Fitness Academy allows you to be active and be healthy in our safe, non-judgmental fitness suite. You will have free access to a fully equipped gym and fitness suite.

To see our centres or learn more about the Sports Academy, scan this QR code



## MEET OUR STUDENTS

“Kirklees College is an amazingly inclusive place. To my surprise, as a minority, South Asian, Muslim girl, I was judged not according to my looks or culture but rather my abilities and performance. In terms of the course specifically, the aspect I love most is how helpful and responsive our tutors are. No matter your ability level, you will be provided with however much support you need, our tutors never leave us feeling unsupported or alone. Personally, this is what I think sets not only our course but our college apart from others.”

Anum







# MEET ONE OF OUR SUBJECT TUTORS

“ Hi, my name is Damon and I am the Study Programme Lead for Year 1 Uniformed Protective Services. I have served in the Royal Navy as a Warfare Specialist & Royal Marine Commandos, as well as being successful in both the fire service and police selection processes. I have many years of operational experience and have now worked in education for the last 12 years, sharing my wealth of experience with potential new learners like yourself. As a department, we have excellent links with all emergency and military organisations to help support you with your study programme journey. ”



**Damon**



## FINANCIAL SUPPORT

### We can support you with:

- Applying for bursaries if you're eligible
- Buying uniform and kits
- Free college meals
- Support with travel costs – you can apply for a travel pass before you start or collect a form from college



## STUDENT SUPPORT

### We have a wide range of support available including:

- Dedicated Personal Development Coach and Pastoral Mentors. Your Personal Development Coach will help you in tutorial sessions to work on our Personal Development Programme, while your Pastoral Mentor will be on hand to offer 1:1 support if and when you need it
- Additional learning support. This is available for students with specialist educational needs and disabilities and is delivered in various forms according to an individual's assessed needs or provisions within an Education and Health Care Plan (EHCP)
- Counselling service
- Careers advice

To find out more about financial and student support, scan this QR code



# WORK PLACEMENT

As part of our Employability Pledge at college, all our 16 – 18 study programme students will have the opportunity to complete work experience and undertake a work placement during their time at college. You will work with a dedicated Work Experience Coach, who will help you find a placement suited to your course or chosen career, or complete work experience to achieve a Careers and Personal Development Passport Award.



# CAREER PROGRESSION

After this course, you can apply to join the service you are interested in or progress to further study at university or apply for a higher apprenticeship.

Previous students have gone on to study degrees in:

- Health Science
- Professional Policing
- Criminology



# WELCOME DAYS

We would also like to invite you to a Welcome Day at your chosen centre in June. This is a great opportunity to come in and see where you will be learning in September, find out more about our facilities, your course and meet tutors and fellow new students. You will be sent more information shortly.

The Welcome Day is:

Huddersfield Centre: 28 June



# OPEN DAYS

Our Open Days provide information about the facilities and support available at college, as well as offer parents / carers and applicants the opportunity to ask any questions about starting a course with us.

The dates for our Summer Open Days are:

**ALL HUDDERSFIELD CENTRES**

**WEDNESDAY 28 JUNE**

5PM – 7PM (last entry 6.30pm)

OPEN DAYS - Scan the QR code to find out more



If you would like to speak to a tutor or have any questions about your course or application, please email [applications@kirkleescollege.ac.uk](mailto:applications@kirkleescollege.ac.uk)

Enrolment will be in August. More information will be sent out closer to the time.

STAY CONNECTED



[www.kirkleescollege.ac.uk](http://www.kirkleescollege.ac.uk)