

WELCOME TO PLUMBING AT KIRKLEES COLLEGE

WELCOME FROM THE CURRICULUM AREA MANAGER

“Congratulations on receiving an offer of a place within the Construction department. My name is Paul and I am the Curriculum Area Manager for Plumbing. The building industry continues to grow and once again we have seen an increase in the number of students wishing to join us. All your lessons will take place at Brunel Construction Centre with a mix of practical and theory lessons. As part of your course, you will complete work placements to support your career opportunities once you are a fully qualified plumber. I look forward to seeing you in September.”



Paul

COURSES IN THIS AREA

- Plumbing Level 1
- Plumbing and Heating Level 2
- Building Services for Construction: Plumbing and Heating Engineering T Level



WHERE WILL YOU BE STUDYING?

Brunel Construction Centre

You will be studying at Brunel Construction Centre. This centre is located off Leeds Road in Huddersfield and is dedicated to the construction trades. The study programme offers a mixture of theory in the classroom and practical workshops. There is also a trade counter for students to visit to ensure they have the right materials for the job. The centre also has a well-stocked LRC and refectory area.



IT STARTS WITH YOU

ADDITIONAL INFORMATION

The construction industry continues to grow and there is currently a shortage of skilled construction workers to match the government's targets on new builds.

At the start of your course, you will need a pair of steel toe cap boots that must be worn at all times in the workshops. All tools and building materials are supplied by the college. Information regarding any required kit will be sent out to you closer to enrolment

Your timetable will usually be 16 hours a week. If you don't have GCSE grade 4 in English and maths then resitting these will be built into your study programme.

As part of the assessment on your course, you will complete set practical tasks and online multiple-choice tests.

You will also have the opportunity to work with local employers and visit a range of different sites, learn from guest visits from industry experts and compete in the national SkillBuild competition.

You can download Microsoft software for free and access free Wi-Fi at college. If you need to access IT equipment, you can borrow devices from the LRC.

All 16 – 18 students have the opportunity to join our Sports Academy, if your timetable allows. We have a Football Academy and Rugby Academy, which both offer you the chance to train in your chosen field alongside your studies. To find out more about the different academies and trials, head to our website.

Want to see our centres? Scan the QR code to view our virtual centre tours.



MEET OUR STUDENTS

“ I am currently on the Level 2 Plumbing course and chose this course because I am very interested in construction. I really enjoy working in the workshop as the tutors allow me to work by myself as well as watch over me, they're always doing rounds around the class, assisting students when they need help. I also enjoy the theory aspect, as the tutors engage with the whole class, explaining every point in detail. After I have completed the course, I would like to do a Level 3 certificate or a Level 3 apprenticeship. This will help me advance my CV, which the college helps me write, and in the future eventually start my own plumbing business. ”

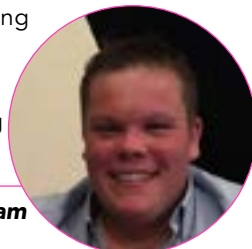
Haroon



MEET ONE OF OUR SUBJECT TUTORS

“ Hello, I'm Graham, and I have been teaching here at Kirklees College since 2021. I am a qualified Plumbing, Heating and Gas Engineer with 20 years' experience working across a vast array of the industry. I enjoy passing on my knowledge and skills to my current students and look forward to inspiring future plumbers joining us in September. ”

Graham



FINANCIAL SUPPORT



We can support you with:

- Applying for bursaries if you're eligible
- Buying uniform and kits
- Free college meals
- Support with travel costs – you can apply for a travel pass before you start or collect a form from college



STUDENT SUPPORT

We have a wide range of support available including:

- Dedicated Personal Development Coach and Pastoral Mentor. Your Personal Development Coach will help you in tutorial sessions to work on our Personal Development Programme, while your Pastoral Mentor will be on hand to offer 1:1 support if and when you need it
- Additional learning support. This is available for students with specialist educational needs and disabilities and is delivered in various forms according to an individual's assessed needs or provisions within an Education and Health Care Plan (EHCP)
- Counselling service
- Careers advice

To find out more about financial and student support, scan this QR code



WORK PLACEMENT

As part of our Employability Pledge at college, all our 16 – 18 study programme students will have the opportunity to complete work experience and undertake a work placement during their time at college. You will work with a dedicated Work Experience Coach, who will help you find a placement suited to your course or chosen career, or complete work experience to achieve a Careers and Personal Development Passport Award.



CAREER PROGRESSION

On this course, students have lots of interaction with employers and many have progressed to an apprenticeship following a successful work placement. Qualified plumbers can become part of a construction team working on building projects and new build developments. Former students have gone on to be self-employed or work as part of a small building team with colleagues trained in other trades.



WELCOME DAYS

We would also like to invite you to a Welcome Day at your chosen centre in June. This is a great opportunity to come in and see where you will be learning in September, find out more about our facilities, your course and meet tutors and fellow new students. You will be sent more information shortly.

The Welcome Day is:
Brunel Construction Centre: 29 June



OPEN DAYS

Our Open Days provide information about the facilities and support available at college, as well as offer parents / carers and applicants the opportunity to ask any questions about starting a course with us.

The dates for our Summer Open Days are:

ALL HUDDERSFIELD CENTRES

WEDNESDAY 28 JUNE

5PM – 7PM (last entry 6.30pm)

OPEN DAYS - Scan the
QR code to find out more



If you would like to speak to a tutor or have any questions about your course or application, please email applications@kirkleescollege.ac.uk

Enrolment will be in August. More information will be sent out closer to the time.

STAY CONNECTED



www.kirkleescollege.ac.uk