

WELCOME TO JOINERY AT KIRKLEES COLLEGE



WELCOME FROM THE CURRICULUM AREA MANAGER

“Congratulations on receiving an offer of a place within the Construction department. My name is Rob and I am the Curriculum Area Manager for Joinery. The building industry continues to grow and once again we have seen an increase in the number of students wishing to join us. All your lessons will take place at Brunel Construction Centre with a mix of practical and theory lessons. As part of your course, you will complete work placements to support your career opportunities once you are a fully qualified joiner. I look forward to seeing you in September.”

Rob



COURSES IN THIS AREA

- Carpentry and Joinery Level 1
- Bench Joinery Level 2
- T Level in Onsite Construction: Carpentry and Joinery

WHERE WILL YOU BE STUDYING?

Brunel Construction Centre

You will be studying at Brunel Construction Centre. This centre is located off Leeds Road in Huddersfield and is dedicated to the construction trades. The study programme offers a mixture of theory in the classroom and practical workshops. There is a trade counter for students to visit to ensure they have the right materials for the job. The centre also has a well-stocked LRC and refectory area.



IT STARTS WITH YOU

ADDITIONAL INFORMATION

The construction industry continues to grow and there is currently a shortage of skilled construction workers to match the government's targets on new builds.

At the start of your course, you will need to purchase a pair of steel toe cap boots that must be worn at all times in the workshops. All tools and building materials are supplied by the college. Information regarding any required kit will be sent out to you closer to enrolment.

Your timetable will usually be 16 hours a week. If you don't have GCSE grade 4 in English and maths then resitting these will be built into your study programme.

You will also have the opportunity to work with local employers and visit a range of different sites, learn from guest visits from industry experts and compete in the national SkillBuild competition.

You can download Microsoft software for free and access free Wi-Fi at college. If you need to access IT equipment, you can borrow devices from the LRC.

All 16 – 18 students have the opportunity to join our Sports Academy, if your timetable allows. We have a Football Academy and Rugby Academy, which both offer you the chance to train in your chosen field alongside your studies. To find out more about the different academies and trials, head to our website.

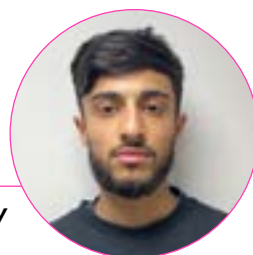
To see our centres or learn more about the Sports Academy, scan this QR code.



MEET OUR STUDENTS

“I progressed to the Level 2 course after finishing my Level 1 last year. The course is great because it goes into the finer details of joinery, such as how to make and fit staircases and doors to the proper regulations. These are good skills to learn as it is important to make things and fit them well. These courses are great for anyone who wants to go into joinery and having to conduct my own research this year has really helped prepare me for employment.”

Muhammad, Level 2 Bench Joinery



MEET ONE OF OUR SUBJECT TUTORS

“Starting your joinery journey at Brunel Construction Centre is the right place to be to hone your hand skills and knowledge for a bright future in the building trade.”

Craig



FINANCIAL SUPPORT



We can support you with:

- Applying for bursaries if you're eligible
- Buying uniform and kits
- Free college meals
- Support with travel costs – you can apply for a travel pass before you start or collect a form from college



STUDENT SUPPORT

We have a wide range of support available including:

- Dedicated Personal Development Coach and Pastoral Mentor. Your Personal Development Coach will help you in tutorial sessions to work on our Personal Development Programme, while your Pastoral Mentor will be on hand to offer 1:1 support if and when you need it
- Additional learning support. This is available for students with specialist educational needs and disabilities and is delivered in various forms according to an individual's assessed needs or provisions within an Education and Health Care Plan (EHCP)
- Counselling service
- Careers advice

To find out more about our financial and student support, please scan the QR code



WORK PLACEMENT

As part of our Employability Pledge at college, all our 16 – 18 study programme students will have the opportunity to complete work experience and undertake a work placement during their time at college. You will work with a dedicated Work Experience Coach, who will help you find a placement suited to your course or chosen career, or complete work experience to achieve a Careers and Personal Development Passport Award.

If you have chosen to study a T Level, you will need to complete 315 hours of work placement during your two years of study.



CAREER PROGRESSION

On this course, students have lots of interaction with employers and many have progressed to an apprenticeship following a successful work placement. Qualified joiners can work as part of a construction team on building projects and new build developments. Former students have gone on to be self-employed or work as part of a small building team with colleagues trained in other trades.



WELCOME DAYS

We would also like to invite you to a Welcome Day at your chosen centre in July. This is a great opportunity to come in and see where you will be learning in September, find out more about our facilities, your course and meet tutors and fellow new students. You will be sent more information shortly.

The Welcome Day is:
Brunel Construction Centre: 3 July.



OPEN DAYS

Our Open Days provide information about the facilities and support available at college, as well as offer parents / carers and applicants the opportunity to ask any questions about starting a course with us.

The dates for our Summer Open Days are:

ALL HUDDERSFIELD CENTRES

WEDNESDAY 28 JUNE

5PM – 7PM (last entry 6.30pm)

OPEN DAYS - Scan the QR
code to find out more



If you would like to speak to a tutor or have any questions about your course or application, please email applications@kirkleescollege.ac.uk

Enrolment will be in August. More information will be sent out closer to the time.

STAY CONNECTED



www.kirkleescollege.ac.uk