

WELCOME TO COUNTRYSIDE, HORTICULTURE AND LANDSCAPING AT KIRKLEES COLLEGE



WELCOME FROM THE CURRICULUM AREA MANAGER

“ Thank you for choosing to study at Kirklees College. My name is Stephen and I am your Curriculum Area Manager. Based at Taylor Hill Animal Centre, you will have access to a range of facilities on your course, as well as opportunities to visit local farms, specialist gardens, countryside parks and businesses linked to your chosen course. The teaching team and I look forward to welcoming you in September. ”



Stephen

COURSES IN THIS AREA

- Agriculture Level 2
- Landscaping and Horticulture Level 2
- Conservation and Countryside Management Level 2



WHERE WILL YOU BE STUDYING?

Taylor Hill Animal Centre

The Taylor Hill Animal Centre is located on the outskirts of Huddersfield and is just a short bus ride from the town centre. It is an award-winning, eco-friendly centre housing a range of animals, including an aviary, aquarium, reptile unit and small mammal house. The centre also includes a small farm with extensive outdoor facilities and wildlife environments. Our tutors have a variety of professional backgrounds, including working in zoos, farming and wildlife rescue.

All lessons take place at Taylor Hill Animal Centre with a well-stocked LRC and small refectory on-site. You will get your hands dirty on this course with a mixture of classroom activity and practical, hands-on lessons.



IT STARTS WITH YOU

ADDITIONAL INFORMATION

You don't need any specific equipment for this course but we do recommend a pair of work boots or wellington boots! Students can also purchase a college hoodie.

Your timetable will usually be 16 hours a week. If you don't have GCSE grade 4 in English and maths then resitting these will be built into your study programme.

You can download Microsoft software for free and access free Wi-Fi at college. If you need to access IT equipment, you can borrow devices from the LRC.

All 16 – 18 students have the opportunity to join our Sports Academy, if your timetable allows. We have a Football Academy and Rugby Academy, which both offer you the chance to train in your chosen field alongside your studies. To find out more about the different academies and trials, head to our website.

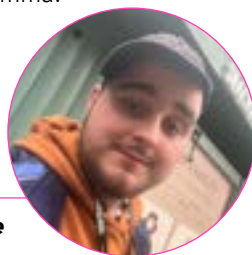
To see our centres or learn more about the Sports Academy, scan this QR code.



MEET OUR STUDENTS

“As an agriculture student you learn about the reality of farming and what it's like to work in the agricultural industry. The course includes visits to real working farms, for example in lambing season, you visit the sheep farm. Also, within the agriculture course you go to farming shows, including Lamma. There's a lot of course work involved in this course, but I would really recommend it to anyone who likes getting their hands dirty and is willing to work. My tutor makes the lessons as practical as possible.”

Harvey, Level 2 Agriculture



MEET ONE OF OUR SUBJECT TUTORS

“Kirklees College is proud to offer a range of Animal Care, Agriculture and Land Based courses based at our Taylor Hill Animal Centre. Lessons are delivered by industry specialist qualified and experienced tutors. We look forward to welcoming applicants to our centre.”

Rachel



FINANCIAL SUPPORT



We can support you with:

- Applying for bursaries if you're eligible
- Buying uniform and kits
- Free college meals
- Support with travel costs – you can apply for a travel pass before you start or collect a form from college



STUDENT SUPPORT

We have a wide range of support available including:

- Dedicated Personal Development Coach and Pastoral Mentor. Your Personal Development Coach will help you in tutorial sessions to work on our Personal Development Programme, while your Pastoral Mentor will be on hand to offer 1:1 support if and when you need it
- Additional learning support. This is available for students with specialist educational needs and disabilities and is delivered in various forms according to an individual's assessed needs or provisions within an Education and Health Care Plan (EHCP)
- Counselling service
- Careers advice

To find out more about financial and student support, scan this QR code



WORK PLACEMENT

As part of our Employability Pledge at college, all our 16 – 18 study programme students will have the opportunity to complete work experience, and undertake a work placement during their time at college. You will work with a dedicated Work Experience Coach, who will help you find a placement suited to your course or chosen career, or complete work experience to achieve a Careers and Personal Development Passport Award.



CAREER PROGRESSION

After you have finished this course, there is a wide range of employment opportunities, such as working in the outdoors as part of the National Trust team helping to maintain Britain's countryside and estates. Some students have gone on to work in the farming and agriculture industry, garden centres and nurseries. Your course will help you develop skills that enhance your employability.



WELCOME DAYS

We would also like to invite you to a Welcome Day at your chosen centre in June. This is a great opportunity to come in and see where you will be learning in September, find out more about our facilities, your course and meet tutors and fellow new students. You will be sent more information shortly.

The Welcome Day is:
Taylor Hill Animal Centre: 29 June



OPEN DAYS

Our Open Days provide information about the facilities and support available at college, as well as offer parents / carers and applicants the opportunity to ask any questions about starting a course with us.

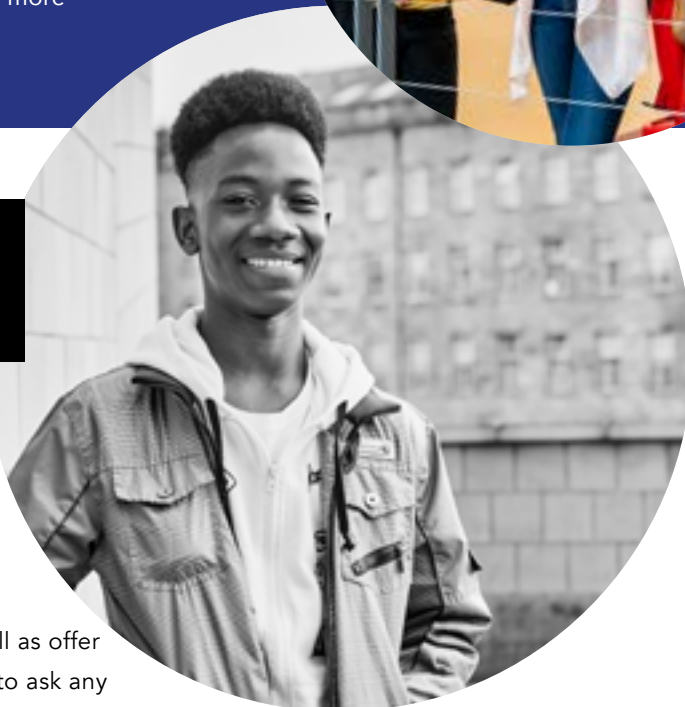
The dates for our Summer Open Days are:

ALL HUDDERSFIELD CENTRES

WEDNESDAY 28 JUNE

5PM – 7PM (last entry 6.30pm)

OPEN DAYS - Scan the
QR code to find out more



If you would like to speak to a tutor or have any questions about your course or application, please email applications@kirkleescollege.ac.uk

Enrolment will be in August. More information will be sent out closer to the time.

STAY CONNECTED



www.kirkleescollege.ac.uk