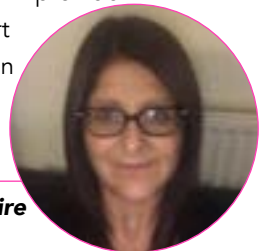


WELCOME TO **BUSINESS** AT KIRKLEES COLLEGE

WELCOME FROM THE CURRICULUM AREA MANAGER

“ Congratulations on securing a place at Kirklees College. My name is Claire and I am the Curriculum Area Manager for Business at Springfield Sixth Form Centre. As a former student of the college, I know you will have a great time studying at Dewsbury! On your course, you will benefit from being taught by experienced staff and working with employers. You will be visited by guest speakers and well-known businesses who will provide you with work placements and live projects. We will support you to be successful on your chosen course and progress on to further study or an apprenticeship. I am looking forward to meeting you all in September! ”

Claire



COURSES IN THIS AREA

- Introduction to Business Level 1
- Business Work Skills Level 2
- Business Level 2
- Business (Leadership and Management) Level 3
- Accounting (AAT) Level 2
- Accounting (AAT) Level 3
- Business Management and Administration: Team Leadership and Management T Level



WHERE WILL YOU BE STUDYING?

Huddersfield Centre is in the town centre and is a short walk from the bus and train stations. Students have access to the college gym which is free for students, Starbucks coffee shop, large refectory and cash machine. The LRC is across two floors with access to course textbooks and computers. Don't be put off by the size of the building, your classes will mostly be in B Block across floors 1 and 2 so you won't have to rush to and from different lessons like you might do at school.

Springfield Sixth Form Centre in Dewsbury is for 16 – 18 students only. This small centre has a real buzz about it and is only a short walk from both the bus and train stations. There is a refectory service and LRC where you can access computers for work.



IT STARTS WITH YOU

ADDITIONAL INFORMATION

Our Business students benefit from lots of engagement with nationally recognised businesses who regularly set live projects to work on. Locally, you will get the opportunity to create a product to sell at the Christmas Market. The course has modules in marketing and finance, as well as core business units.

Your timetable will usually be 16 hours a week. If you don't have GCSE grade 4 in English and maths then resitting these will be built into your study programme.

You can download Microsoft software for free and access free Wi-Fi at college. If you need to access IT equipment, you can borrow devices from the LRC.

All 16 – 18 students have the opportunity to join our Sports Academy, if your timetable allows. We have a Football Academy and Rugby Academy, which both offer you the chance to train in your chosen field alongside your studies. To find out more about the different academies and trials, head to our website.

To see our centres or learn more about the Sports Academy, scan this QR codes.



MEET OUR STUDENTS

“ I feel like my course has been helpful with transferable skills. Ever since I arrived at college, I had career aspirations of going into finance and studying business with a wide range of units has helped me with this. My tutors have been very helpful in providing me with support in achieving high grades. ”

Naumaan, Business Level 3



MEET ONE OF OUR SUBJECT TUTORS

“ Hi, I'm Amanda, one of the Business and IT lecturers and I have been working at Kirklees College for 25 years. I have experience in a wide range of industries and I pride myself on my coaching and people skills. In my spare time, I'm a baker and have baked seasonal confectionary for my students at Christmas and cakes for students to sell when we run stalls at Huddersfield and Dewsbury market. ”

Amanda



FINANCIAL SUPPORT



We can support you with:

- Applying for bursaries if you're eligible
- Buying uniform and kits
- Free college meals
- Support with travel costs – you can apply for a travel pass before you start or collect a form from college



STUDENT SUPPORT

We have a wide range of support available including:

- Dedicated Personal Development Coach and Pastoral Mentors. Your Personal Development Coach will help you in tutorial sessions to work on our Personal Development Programme, while your Pastoral Mentor will be on hand to offer 1:1 support if and when you need it
- Additional learning support. This is available for students with specialist educational needs and disabilities and is delivered in various forms according to an individual's assessed needs or provisions within an Education and Health Care Plan (EHCP)
- Counselling service
- Careers advice

To find out more about our financial and student support, please scan the QR code



WORK PLACEMENT

As part of our Employability Pledge at college, all our 16 – 18 study programme students will have the opportunity to complete work experience and undertake a work placement during their time at college. You will work with a dedicated Work Experience Coach, who will help you find a placement suited to your course or chosen career, or complete work experience to achieve a Careers and Personal Development Passport Award.

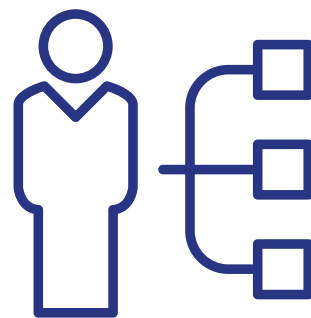
If you have chosen to study a T Level, you will need to complete 315 hours of work placement during your two years of study.



CAREER PROGRESSION

After completing this course, you can progress to employment, an apprenticeship, our foundation degree course or higher education with another provider. A business qualification gives you a range of employability skills, including communication, team working research and IT skills. A significant number of our students choose to progress to university and enrol on a variety of courses, including:

- Business Management
- Law with Criminology
- Fashion Design with Marketing
- Event Management
- Accountancy and Finance



WELCOME DAYS

We would also like to invite you to a Welcome Day at your chosen centre in June. This is a great opportunity to come in and see where you will be learning in September, find out more about our facilities, your course and meet tutors and fellow new students. You will be sent more information shortly.

The Welcome Days are:

Huddersfield Centre: 28 June

Springfield Sixth Form Centre: 27 June



OPEN DAYS

Our Open Days provide information about the facilities and support available at college, as well as offer parents / carers and applicants the opportunity to ask any questions about starting a course with us.



ALL HUDDERSFIELD CENTRES

WEDNESDAY 28 JUNE

5PM – 7PM (last entry 6.30pm)

ALL DEWSBURY CENTRES

TUESDAY 27 JUNE

5PM – 7PM (last entry 6.30pm)

OPEN DAYS - Scan the QR code to find out more



If you would like to speak to a tutor or have any questions about your course or application, please email applications@kirkleescollege.ac.uk

Enrolment will be in August. More information will be sent out closer to the time.

STAY CONNECTED



www.kirkleescollege.ac.uk