

WELCOME TO ART AND DESIGN AT KIRKLEES COLLEGE

WELCOME FROM THE CURRICULUM AREA MANAGER

“ Hi, my name is Warren and I am the Curriculum Area Manager for Art and Design at Kirklees College’s Huddersfield Centre. Here you will be taught by industry experts with a wealth of experience and talent. You will have access to specialist equipment and fantastic art studios. I look forward to meeting you in September! ”

Warren



“ Hi, my name is Claire and I am the Curriculum Area Manager for Art and Design at both of our Dewsbury centres. As a former student of the college, I know you will have a great time studying at Dewsbury! Our teaching team bring a wealth of expertise to the courses and we have some fantastic facilities at Dewsbury. Don’t forget to check out our Antony Gormley sculpture on the rooftop of Pioneer Higher Skills Centre! ”

Claire



COURSES IN THIS AREA

- Art and Design Skills Level 1
- Art and Design Skills Level 2
- Art and Design Practice Level 3
- Gateway Qualifications Diploma in Skills for Creative Industries Level 1

WHERE WILL YOU BE STUDYING?

Huddersfield Centre is in the town centre and is just a short walk from the bus and train stations. Students at this centre have access to the college gym for free, a Starbucks, large refectory and cash machine. Set across two floors, the LRC has access to plenty of course textbooks and computers. Art and Design students have access to range of resources, including studio space. Students based at Huddersfield Centre also get to visit our Dewsbury centres to access the specialist facilities available.

Springfield Sixth Form Centre in Dewsbury is for 16 – 18 students only. This small centre has a real buzz about it and is located a short walk from both the bus and train stations. At this centre, students have a refectory service, LRC and access to computers for work. Students have access to a large, dedicated studio space and can also access the specialist facilities available at Pioneer Higher Skills Centre.

Pioneer Higher Skills Centre is a historic building that has been transformed into our latest learning facility in the centre of Dewsbury and is only a short walk from the train and bus stations. Art and Design students have access to a range of facilities, including textiles equipment, art workshops and studio spaces. There is also a coffee shop, Warsi’s Cafe, free Wi-Fi and LRC located on the top floor.



IT STARTS WITH YOU

ADDITIONAL INFORMATION

Your timetable will usually be 16 hours a week. If you don't have GCSE grade 4 in English and maths then resitting these will be built into your study programme. You can download Microsoft software for free and access free Wi-Fi at college. If you need to access IT equipment, you can borrow devices from the LRC.

All 16 – 18 students have the opportunity to join our Sports Academy, if your timetable allows. We have a Football Academy and Rugby Academy, which both offer you the chance to train in your chosen field alongside your studies. To find out more about the different academies and trials, head to our website.

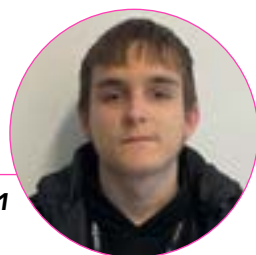
To see our centres or learn more about the Sports Academy, scan this QR code.



MEET OUR STUDENTS

“ The Art and Design course is really fun, I get to learn new things and techniques that I can use in the future. ”

Josh, Level 1



MEET ONE OF OUR SUBJECT TUTORS

“ Hi, I am Zainab, I am the Study Programme Lead for the BTEC Level 3 Art and Design Practice at Kirklees College. I have worked at the college as a creative lecturer for nearly 30 years and my specialist area is fashion and textiles but I have taught a variety of subjects in Art and Design. In my time at Kirklees College, I have taken on a variety of roles, including working with Level 3 students and local artist Saba Rifat on a live project, creating art work for the recent renovation of the underpass under Rishworth Road in Dewsbury named 'Tessella' which has been completed as part of the Dewsbury Creative Arts Programme. ”

Zainab



FINANCIAL SUPPORT



We can support you with:

- Applying for bursaries if you're eligible
- Buying uniform and kits
- Free college meals
- Support with travel costs – you can apply for a travel pass before you start or collect a form from college



STUDENT SUPPORT

We have a wide range of support available including:

- Dedicated Personal Development Coach and Pastoral Mentor. Your Personal Development Coach will help you in tutorial sessions to work on our Personal Development Programme, while your Pastoral Mentor will be on hand to offer 1:1 support if and when you need it
- Additional learning support. This is available for learners with specialist educational needs and disabilities and is delivered in various forms according to an individual's assessed needs or provisions within an Education and Health Care Plan (EHCP).
- Counselling service
- Careers advice

To find out more about our financial and student support, please scan the QR code



CAREER PROGRESSION

The majority of our Art and Design students choose to continue their studies at a higher level. You can either stay with us to complete a HNC and HND at Pioneer Higher Skills Centre or progress to university. Some of the degrees our previous students have chosen to study are:

- Fashion
- Contemporary Art and Illustration
- Primary Education
- Fine Art
- Graphic Design



WORK PLACEMENT

As part of our Employability Pledge at college, all our 16 – 18 study programme students will have the opportunity to complete work experience and undertake a work placement during their time at college. You will work with a dedicated Work Experience Coach, who will help you find a placement suited to your course or chosen career, or complete work experience to achieve a Careers and Personal Development Passport Award.



WELCOME DAYS

We would also like to invite you to a Welcome Day at your chosen centre in June. This is a great opportunity to come in and see where you will be learning in September, find out more about our facilities, your course and meet tutors and fellow new students. You will be sent more information shortly.

The Welcome Days are:

Pioneer Higher Skills Centre: 27 June

Huddersfield Centre: 30 June



OPEN DAYS

Our Open Days provide information about the facilities and support available at college, as well as offer parents / carers and applicants the opportunity to ask any questions about starting a course with us.

The dates for our Summer Open Days are:

ALL HUDDERSFIELD CENTRES

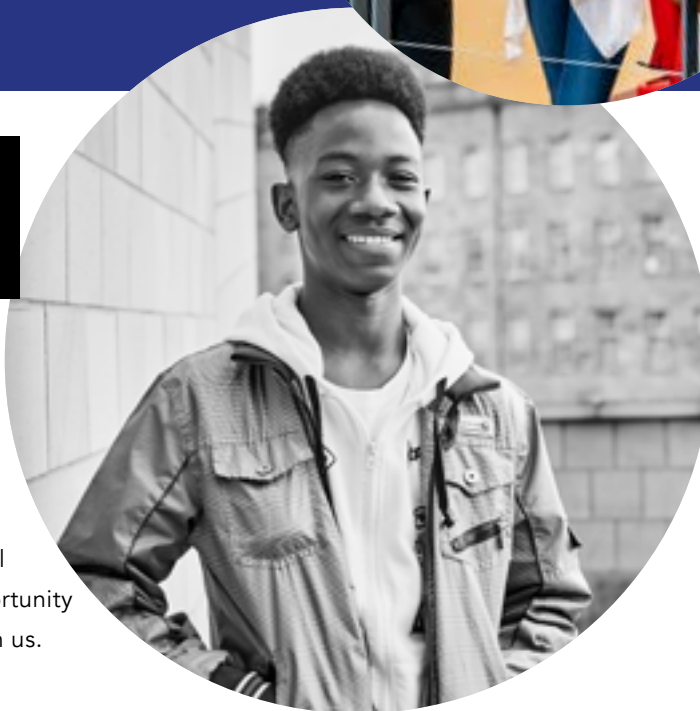
WEDNESDAY 28 JUNE

5PM – 7PM (last entry 6.30pm)

ALL DEWSBURY CENTRES

TUESDAY 27 JUNE

5PM – 7PM (last entry 6.30pm)



OPEN DAYS - Scan the QR code to find out more



If you would like to speak to a tutor or have any questions about your course or application, please email applications@kirkleescollege.ac.uk

Enrolment will be in August. More information will be sent out closer to the time.

STAY CONNECTED



www.kirkleescollege.ac.uk