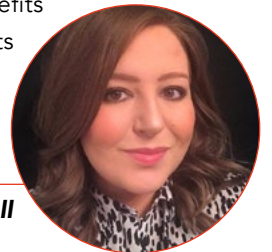


WELCOME TO SCIENCE AT KIRKLEES COLLEGE

WELCOME FROM THE CURRICULUM AREA MANAGER

“ Congratulations on securing a place to study your T Level qualification in the science department. My name is Charlotte Catmull and I am the Curriculum Area Manager for Science. The science department at Kirklees College continues to grow with an increasing number of students realising the benefits of studying at level 3. T Level qualifications continue to open up many study routes to students and almost all our level 3 students choose to progress to higher education in a wide range of degree level courses. I look forward to welcoming you in September and seeing you working in one of our laboratories. ”



Charlotte Catmull

T LEVEL COURSES IN THIS AREA

- Science: Laboratory Sciences

T LEVEL COURSES IN THIS AREA

HUDDERSFIELD CENTRE

Huddersfield Centre is located in the town centre and is a short walk from the bus and train stations. Students have access to the college gym which is free for students, Starbucks coffee shop, large refectory and cash machine. The LRC is across four floors with access to course textbooks and computers. You'll also be taught in our fantastic laboratory facilities and have real practical hands-on learning during your studies. The Science department has a whole floor dedicated to labs. We have six labs named after famous scientists and a forensics crime scene room.



Want to see our centres? Scan the QR code to view our virtual centre tours.



WHAT WILL YOU STUDY?

This exciting new qualification has been designed to help you gain the knowledge and skills needed to work in the science industry.

On this course, you will cover topics that are relevant to the science industry to prepare you for a future career in laboratory science. While on your two-year course, you will study the general regulation and processes in health and science sector. This includes managing information and data and working in the sector and this is core content, which you will also learn with students on our Health T Level course.

The course will also provide you with real-life practices to use in future roles by covering topics that are specific to science to help you in your future career. This includes focusing on learning the science sector, further scientific knowledge used in everyday practice and developing relevant analytical techniques.

The units on this course will also cover the ethics of science and how it can influence your work and the work undertaken by organisations. You'll also look at the experimental equipment and techniques and how they can affect processes with laboratory sciences which will help you identify and resolve issues with scientific equipment or data errors.

You will learn the principals of good scientific and clinical practice to prepare you for work in your industry placement. The level of science undertaken in this T Level is A-Level standard and will cover all three sciences, biology, chemistry and physics.

You will be studying in college four days a week and your timetable will be confirmed before you start your studies.



ASSESSMENT

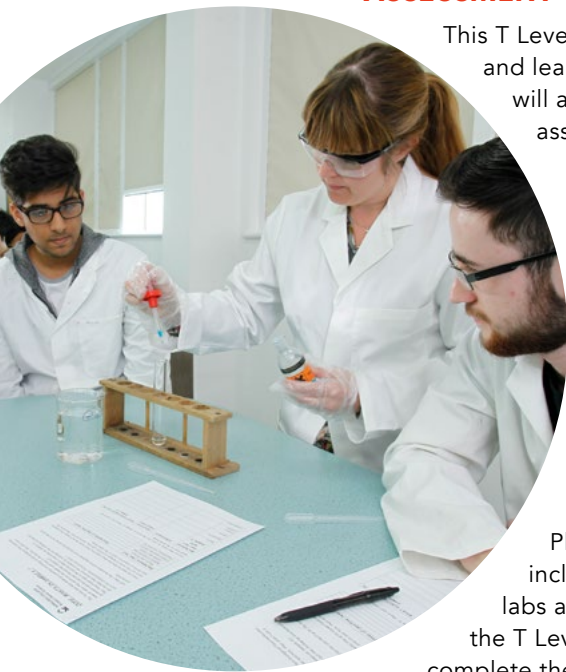
This T Level is exam-based in your first year, so from September to June you will be preparing and learning to sit two core knowledge exam papers, which will be sat in June. You will also have an employer set project in your first year, which contains controlled assessments.

You'll also be assessed on occupational specialisms, which looks at what you're studying in your technical part of this qualification and how what you're learning in regards to your knowledge, skills and behaviours is relevant to an occupation.

INDUSTRY PLACEMENT

On the course, you'll also undertake a minimum of 315 hours work in an industry placement. Your placement will start in the second year of your studies and be taken in a set block of weeks to give you the chance to get real experience in the science industry.

Placements can be undertaken in a variety of settings that have a laboratory, this includes the NHS, schools, textile labs, quality control and chemical processing plant labs and you will be supported in finding your placement. This is a mandatory aspect of the T Level where you will be required to work towards achieving set learning goals and complete the placement hours for a T Level certificate to be awarded.



MEET ONE OF OUR SUBJECT TUTORS

“ Hi, my name is Ruth and I am one of the Applied Science and Forensic Science tutors. I've been teaching at the college since 2018 and as a department, we're pleased to help you start your journey in laboratory sciences. Laboratory Technicians work in a wide range of organisations across a number of different industries, including chemical, quality control and biological settings. The department is really excited to welcome you to the college in September. ”



Ruth Peckett



FINANCIAL SUPPORT



We can support you with:

- Applying for bursaries if you're eligible
- Buying uniform and kits
- Free college meals
- Support with travel costs – you can apply for a travel pass before you start or collect a form from college



STUDENT SUPPORT

We have a wide range of support available including:

- Dedicated Progress Coach. Your Progress Coach will work with you on a 1:1 basis to support you with your progress, needs and goals.
- Additional learning support. This is available for learners with specialist educational needs and disabilities and is delivered in various forms according to an individual's assessed needs or provisions within an Education and Health Care Plan (EHCP.)
- Counselling service
- Careers advice

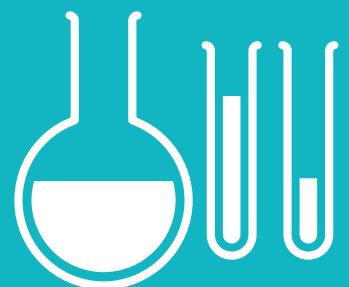
To find out more about our financial and student support, please scan the QR code



CAREER PROGRESSION

A number of major UK universities accept T Levels, and we will support our students in this progression route to university. T Levels students can also progress onto employment in the following roles:

- Laboratory Technician
- Technical Support Scientist
- Laboratory Assistant
- Medical Laboratory Assistant
- Quality Control Laboratory Technician

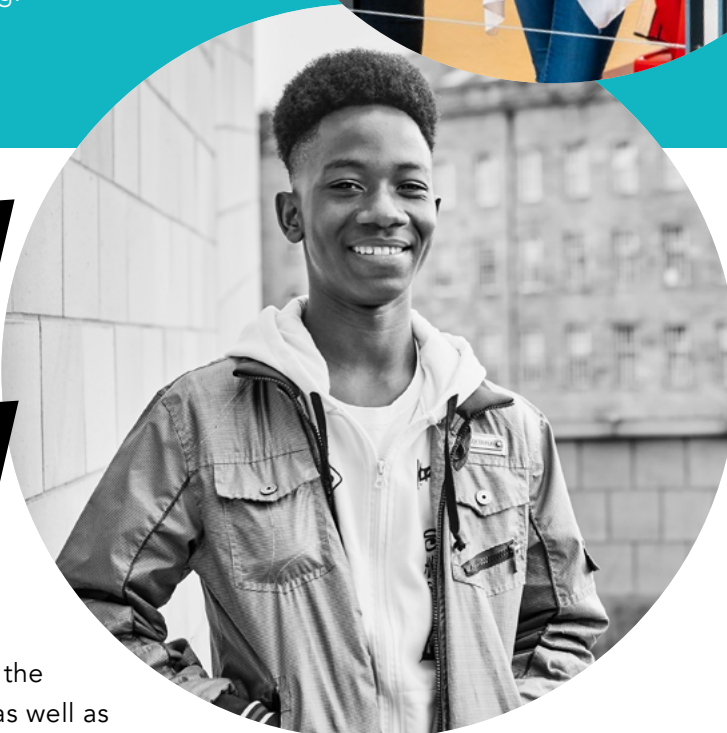


WELCOME DAYS

If you've applied to Kirklees College, come along to one of our welcome days to meet some of your classmates and tutors, ask any questions about your course and see what student life at Kirklees College has to offer. Look out for your invite in the post and remember to let us know if you're attending.



OPEN DAYS



Our Open Days provide information about the facilities and support available at college, as well as offer parents / carers and applicants the opportunity to ask any questions about starting a course with us.

The dates for our Summer Open Days are:

ALL DEWSBURY CENTRES

WEDNESDAY 22 JUNE

5PM - 7PM (last entry 6.30pm)

ALL HUDDERSFIELD CENTRES

THURSDAY 30 JUNE

5PM - 7PM (last entry 6.30pm)

OPEN DAYS - Scan the QR code to find out more



93%

OF STUDENTS WOULD RECOMMEND KIRKLEES COLLEGE

97%

OF STUDENTS SAY THE COLLEGE IS WELCOMING FOR PEOPLE OF ALL BACKGROUNDS

95%

OF STUDENTS SAY THEIR COURSE ENCOURAGES THEM TO BE AN INDEPENDENT LEARNER

If you would like to speak to a tutor or have any questions about your course or application, please email applications@kirkleescollege.ac.uk

Enrolment will be in August. More information will be sent out closer to the time.

STAY CONNECTED



www.kirkleescollege.ac.uk