

# WELCOME TO CHILDREN AND FAMILIES AT KIRKLEES COLLEGE

## WELCOME FROM THE HEAD OF FACULTY

“Congratulations on securing a place to study your T Level qualification at Kirklees College. My name is Mathew Gartland, I am the Head of Faculty for the Health, Science and Care Services. On this exciting new T Level qualification, you’ll be studying at our Springfield Sixth Form Centre in Dewsbury and have the chance to mix classroom-based lessons with practical work placements working with children from Early Years and Primary Schools across Kirklees. The staff bring with them valuable experience from industry to support you in fulfilling your potential on your pathway into an exciting career in the growing early years and childcare sector.”



**Mathew Gartland**

## T LEVEL COURSES IN THIS AREA

- Education and Childcare – Early Years Education and Childcare

## T LEVEL COURSES IN THIS AREA

### HUDDERSFIELD CENTRE

Huddersfield Centre is located in the town centre and is a short walk from the bus and train stations. Students have access to the college gym which is free for students, Starbucks coffee shop, large refectory and cash machine. The LRC is across four floors with access to course textbooks and computers.

### SPRINGFIELD SIXTH FORM CENTRE

Springfield Sixth Form Centre in Dewsbury is for 16 – 18 learners only. This small centre has a real buzz about it and is only a short walk from both the bus and train stations. There is a refectory service and LRC where you can access computers for work. You’ll have the ability to learn in our dedicated child room facility and experience our forest school nature area to get hands-on learning in a natural environment.



Want to see our centres? Scan the QR code to view our virtual centre tours.



## WHAT WILL YOU STUDY?

This exciting new qualification has been designed to help you gain the knowledge and skills needed to work in the early years sector.

On this course, you will cover topics that are relevant to the education and childcare industry to prepare you for a future career in early years education or childcare. While on your two-year course, you will develop an understanding of the education and childcare sector from ages 0 to 19.

The course will also provide you with real-life practices to use in future roles, such as supporting and promoting children's play, development and early education. You'll get the opportunity to do this with our infant simulators, which will give a realistic simulated experience of childcare. The smart babies use wireless programming to track and report on behaviours and assess your ability to care and meet needs, as well as being used as a teaching resource.

The units on this course will also cover how you develop relationships with children to facilitate their development, the importance of safeguarding, health and safety and wellbeing for children. You'll also learn how to plan, provide and review care, play and educational opportunities to enable children to progress and develop as they grow. You'll also study about the importance of working in partnership with colleagues, parents, carers and other professionals to support children's development and apply it to your future career.

You'll also be assessed on occupational specialisms, which looks at what you're studying in your technical part of this qualification and how what you're learning in regards to your knowledge, skills and behaviours is relevant to a job.

You will be studying in college two to three days a week and your timetable will be confirmed before you start your studies.



### ASSESSMENT

This T Level is exam-based in your first year, so from September to June you will be preparing and learning to sit two core knowledge exam papers, which will be sat in June. You will also have an employer set project in your first year, which contains controlled assessments.

### INDUSTRY PLACEMENT

Your placement will consist of a minimum of 750 hours of work during your two years of studies, with 375 hours undertaken in the first year and 375 hours in the second year. It will depend on the employer how your placement will be split, this will be confirmed once your studies begin and you will be supported in finding your placement. This is a mandatory aspect of the T Level where you will be required to work towards achieving set learning goals and complete the placement hours for a T Level certificate to be awarded.

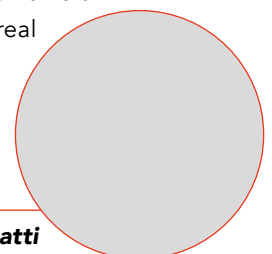
To undertake this course, you will be DBS checked to be able to work in childcare settings and once you have completed the course and received your qualification, you'll have a licence to practice as a early years educator.



## MEET ONE OF OUR SUBJECT TUTORS

“ Hi, my name is Rachel and I have been a tutor at Kirklees College for over 10 years. We can't wait to help you start your journey in childcare. This qualification offers you the chance to get real experience in childcare settings through your placement and be taught by experienced people like myself to help you progress into the industry. I consider myself to be approachable and supportive and as a department, we're delighted to welcome you to the college in September. ”

Rachel Fomiatti



# FINANCIAL SUPPORT



## We can support you with:

- Applying for bursaries if you're eligible
- Buying uniform and kits
- Free college meals
- Support with travel costs – you can apply for a travel pass before you start or collect a form from college



# STUDENT SUPPORT

## We have a wide range of support available including:

- Dedicated Progress Coach. Your Progress Coach will work with you on a 1:1 basis to support you with your progress, needs and goals.
- Additional learning support. This is available for learners with specialist educational needs and disabilities and is delivered in various forms according to an individual's assessed needs or provisions within an Education and Health Care Plan (EHCP.)
- Counselling service
- Careers advice

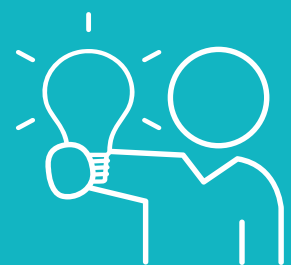
To find out more about our financial and student support, please scan the QR code



# CAREER PROGRESSION

A number of major UK universities accept T Levels, and we will support our students in this progression route to university. T Levels students can also progress onto employment in the following roles:

- Teaching Assistant
- Nursery Worker
- Learning Mentor
- Special Educational Needs Teaching Assistant

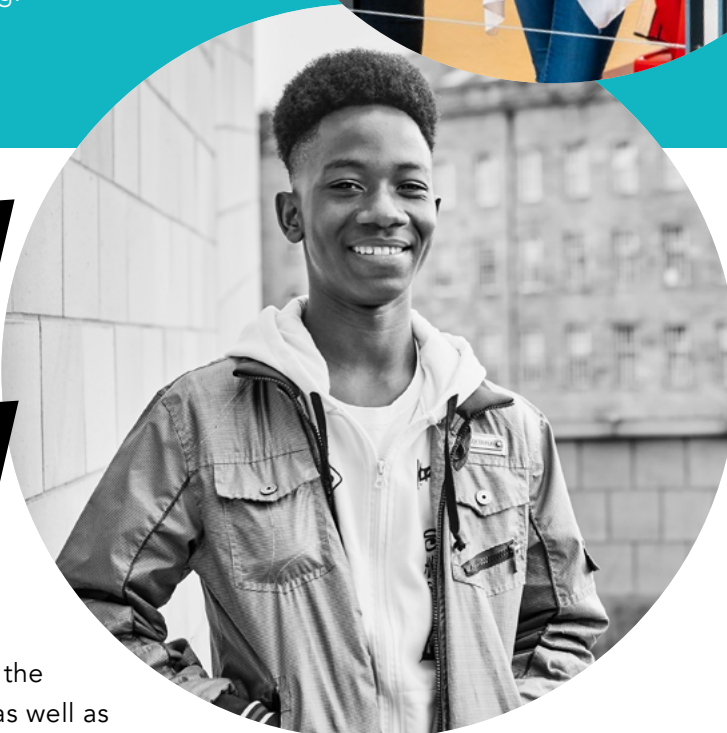


# WELCOME DAYS

If you've applied to Kirklees College, come along to one of our welcome days to meet some of your classmates and tutors, ask any questions about your course and see what student life at Kirklees College has to offer. Look out for your invite in the post and remember to let us know if you're attending.



# OPEN DAYS



Our Open Days provide information about the facilities and support available at college, as well as offer parents / carers and applicants the opportunity to ask any questions about starting a course with us.

The dates for our Summer Open Days are:

## ALL DEWSBURY CENTRES

**WEDNESDAY 22 JUNE**

5PM - 7PM (last entry 6.30pm)

## ALL HUDDERSFIELD CENTRES

**THURSDAY 30 JUNE**

5PM - 7PM (last entry 6.30pm)

OPEN DAYS - Scan the QR code to find out more



93%

OF STUDENTS WOULD RECOMMEND KIRKLEES COLLEGE

97%

OF STUDENTS SAY THE COLLEGE IS WELCOMING FOR PEOPLE OF ALL BACKGROUNDS

95%

OF STUDENTS SAY THEIR COURSE ENCOURAGES THEM TO BE AN INDEPENDENT LEARNER

If you would like to speak to a tutor or have any questions about your course or application, please email [applications@kirkleescollege.ac.uk](mailto:applications@kirkleescollege.ac.uk)

Enrolment will be in August. More information will be sent out closer to the time.

STAY CONNECTED



[www.kirkleescollege.ac.uk](http://www.kirkleescollege.ac.uk)