

WELCOME TO

PLASTERING

AT KIRKLEES COLLEGE



WELCOME FROM THE CURRICULUM AREA MANAGER

“ Congratulations on receiving an offer of a place within the Construction department. My name is Nick Taylor and I am the Curriculum Area Manager for Plastering. The building industry continues to grow and once again we have seen an increase in the number of students wishing to join us. All your lessons will take place at Brunel Construction Centre with a mix of practical and theory lessons. As part of your course, you will complete work placements to support your career opportunities once you are a fully qualified plasterer. I look forward to seeing you in September and information regarding any required kit will be sent out to you closer to enrolment. ”



Nick Taylor

COURSES IN THIS AREA

- Level 1 Plastering
- Level 2 Plastering
- Level 3 Plastering

WHERE WILL YOU BE STUDYING?

Brunel Construction Centre

This centre is located off Leeds Road in Huddersfield and is dedicated to the construction trades. Lessons are a mixture of classroom-based theory lessons and practical training in dedicated plastering bays. The centre has an LRC, refectory area and limited car parking available on-site.

[Click here to take a virtual tour of the centre](#)

ADDITIONAL INFORMATION

The construction industry continues to grow and there is currently a shortage of skilled construction workers to match the government's targets on new builds.

At the start of your course, you will need a pair of steel toe cap boots that must be worn at all times in the workshops. All tools and building materials are supplied by the college.

Your timetable will usually be 16 hours a week. If you don't have GCSE Grade 4 in English and maths then resitting these will be built into your study programme.



IT STARTS WITH YOU

ADDITIONAL INFORMATION

As part of your assessment, you will complete set practical tasks and online multiple-choice tests.

On your course, you will have the opportunity to complete a two-week work placement. A member of our Work Placement team will work with you to find a suitable placement.

You will also have the opportunity to work with local employers and visit a range of different sites, learn from guest visits from industry experts and compete in the national SkillBuild competition.

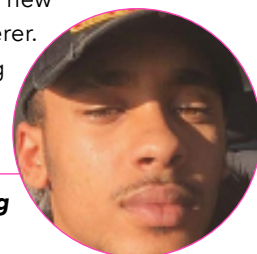
As a Microsoft Showcase College, you can download Microsoft software for free to your device and access free Wi-Fi at college. You can also study Microsoft Office Specialist (MOS) qualifications alongside your study programme.



MEET OUR STUDENTS

“ I originally started on the Plumbing course but decided it wasn't the right choice for me and swapped to the Plastering course. I really enjoy the practical elements of my course and learning new skills that I will need to be a successful plasterer. Once I complete my course I am either going to look for an apprenticeship or set up my own business. ”

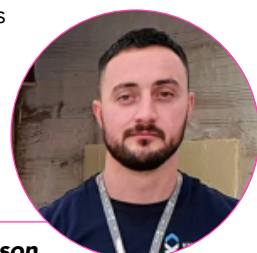
Sholan Daly, Level 2 Plastering



MEET ONE OF OUR SUBJECT TUTORS

“ Hi, I'm Scott, one of the Plastering lecturers and assessors working in the construction sector. After many years leading a team in industry, I transitioned into the education sector and have worked at Kirklees College for two years now delivering and assessing the Plastering qualifications. I am passionate about implementing digital technologies into education to create innovative classroom experiences. ”

Scott Stevenson



FINANCIAL SUPPORT

We can support you with:

- Applying for bursaries if you're eligible
- Buying uniform and kits
- Free college meals
- Support with travel costs – you can apply for a travel pass before you start or collect a form from college



[Click here for more information](#)



STUDENT SUPPORT

We have a wide range of support available including:

- Dedicated Progress Coach. Your Progress Coach will work with you on a 1:1 basis to support you with your progress, needs and goals.
- Additional learning support. This is available for learners with specialist educational needs and disabilities and is delivered in various forms according to an individual's assessed needs or provisions within an Education and Health Care Plan (EHCP.)
- Counselling service
- Careers service

[Click here for more information](#)



CAREER PROGRESSION

In this department, students have lots of interaction with employers and many have progressed to an apprenticeship following a successful work placement. Qualified plasterers can become part of construction team working on building projects and new build developments. Former students have gone on to be self-employed or work as part of a small building team with colleagues trained in other trades.



VIRTUAL OPEN DAYS



Attend a LIVE Virtual Open Day to find out more information about college life, our centres, facilities and the support available.

The dates for our Summer Virtual Open Days are:

TUESDAY 29 JUNE **WEDNESDAY 30 JUNE**

[VIRTUAL OPEN DAY - Click here to find out more](#)

94%

OF OUR STUDENTS
WOULD RECOMMEND
KIRKLEES COLLEGE

93%

OF OUR STUDENTS
SAID THEIR
TEACHING IS GOOD

95%

OF OUR STUDENTS
SAID THEY HAVE
HAD A GOOD
EXPERIENCE

If you would like to speak to a tutor or have any questions about your course or application, please email applications@kirkleescollege.ac.uk

Enrolment will be in August. More information will be sent out closer to the time.

IT STARTS WITH YOU

STAY CONNECTED



www.kirkleescollege.ac.uk