

WELCOME TO **BUSINESS AND ENTERPRISE** AT KIRKLEES COLLEGE

WELCOME FROM THE CURRICULUM AREA MANAGER

“ Congratulations on securing a place at Kirklees College. My name is Furkan Uddin and I am the Curriculum Area Manager for Business. On your course, you will benefit from lots of interaction with an extensive range of employers. Our guest speakers and well-known businesses will provide you with work placements and set live projects. A substantial number of our students progress to university and we are also seeing an increasing number of students progress into apprenticeships. Good luck with your studies and we will see you in September! ”



Furkan Uddin

COURSES IN THIS AREA

- Level 1 Introduction to Business
- Level 2 Business
- Level 2 Business Workskills
- Level 2 Business Employability and Enterprise Workskills
- Level 3 Business (Leadership or Finance Pathways)



WHERE WILL YOU BE STUDYING?

Huddersfield Centre or Springfield Sixth Form Centre

Huddersfield Centre is located in the town centre and is a short walk from the bus and train stations. Students have access to the college gym which is free for students, Starbucks coffee shop, large refectory and cash machine. The LRC is across four floors with access to course text books and computers. Don't be put off by the size of the building, your classes will mostly be in block B across floors 1 and 2 so you won't have to rush from different lessons like you might do at school.

Springfield Sixth Form Centre in Dewsbury is for 16 – 18 learners only. This small centre has a real buzz about it and is only a short walk from both the bus and train stations. There is a refectory service and LRC where you can access computers for work.

[Click here to take a virtual tour of the Huddersfield Centre](#)

[Click here to take a virtual tour of the Springfield Sixth Form Centre](#)



IT STARTS WITH YOU

ADDITIONAL INFORMATION

Our Business students benefit from lots of engagement with local and national businesses who regularly set live projects to work on, such as creating a product to sell at the Christmas Market. The course has modules in marketing and finance, as well as core business units.

Your timetable will usually be 16 hours a week. If you don't have GCSE Grade 4 in English and maths then resitting these will be built into your study programme.

On your course, you will have the opportunity to complete a two-week work placement. A member of our Work Placement team will work with you to find a suitable placement.

As a Microsoft Showcase College, you can download Microsoft software for free to your device and access free Wi-Fi at college. You can also study Microsoft Office Specialist (MOS) qualifications alongside your study programme.



MEET OUR STUDENTS

“ I chose this course as my strengths rely heavily on communication with people and adapting to situations with my skillset. I enjoy problem solving and the tutors are enthusiastic about guiding us on the right path. After this course, I would like to go to university to study business management to become an entrepreneur. ”

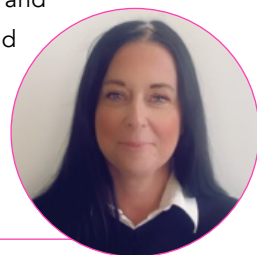
Ujas Patel, Level 3 Business



MEET ONE OF OUR SUBJECT TUTORS

“ Hi, I'm Amanda, one of the business and IT lecturers and I have been working at Kirklees College for 25 years. I have experience in a wide range of industries and I pride myself on my coaching and people skills. In my spare time I'm a baker and have baked seasonal confectionary for my students at Christmas and cakes for students to sell when we set up stalls at Huddersfield and Dewsbury market. ”

Amanda Tinker



FINANCIAL SUPPORT

We can support you with:

- Applying for bursaries if you're eligible
- Buying uniform and kits
- Free college meals
- Support with travel costs – you can apply for a travel pass before you start or collect a form from college

[Click here for more information](#)



STUDENT SUPPORT

We have a wide range of support available including:

- Dedicated Progress Coach. Your Progress Coach will work with you on a 1:1 basis to support you with your progress, needs and goals.
- Additional learning support. This is available for learners with specialist educational needs and disabilities and is delivered in various forms according to an individual's assessed needs or provisions within an Education and Health Care Plan (EHCP.)
- Counselling service
- Careers service

[Click here for more information](#)

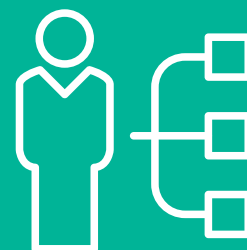


CAREER PROGRESSION

After completing your course, you can progress to employment, an apprenticeship, our HNC course or higher education with another provider. A business qualification gives you a range of employability skills, including communication, team working research and IT skills.

A significant number of our students choose to progress to university and enrol on a variety of courses, including:

- Business Management
- Law with Criminology
- Accountancy
- Fashion Design with Marketing
- Event Management
- Accountancy and Finance



VIRTUAL OPEN DAYS



Attend a LIVE Virtual Open Day to find out more information about college life, our centres, facilities and the support available.

The dates for our Summer Virtual Open Days are:

TUESDAY 29 JUNE **WEDNESDAY 30 JUNE**

[VIRTUAL OPEN DAY - Click here to find out more](#)

94%

OF OUR STUDENTS
WOULD RECOMMEND
KIRKLEES COLLEGE

93%

OF OUR STUDENTS
SAID THEIR
TEACHING IS GOOD

95%

OF OUR STUDENTS
SAID THEY HAVE
HAD A GOOD
EXPERIENCE

If you would like to speak to a tutor or have any questions about your course or application, please email applications@kirkleescollege.ac.uk

Enrolment will be in August. More information will be sent out closer to the time.

IT STARTS WITH YOU

STAY CONNECTED



www.kirkleescollege.ac.uk