

WELCOME TO ANIMAL CARE AT KIRKLEES COLLEGE



WELCOME FROM THE CURRICULUM AREA MANAGER

“ Welcome to Animal Care. My name is Stephen Finney and I am the Curriculum Area Manager for Animal Care. We offer Animal Care at the Taylor Hill Animal Care Centre in Huddersfield and also at the Hargate Hill Equestrian Centre for students in the Glossop area. Myself and the teaching team look forward to welcoming you in September. ”



Stephen Finney

COURSES IN THIS AREA

- Level 1 Animal and Land-Based Studies
- Level 2 Animal Care
- Level 3 Animal Management



WHERE WILL YOU BE STUDYING?



Taylor Hill Animal Care Centre or Hargate Hill Equestrian Centre

The Taylor Hill Animal Care Centre is located in Newsome, a short bus ride from the town centre. It is an award-winning, eco-friendly centre housing a range of animals, including an aviary, aquarium, reptile unit and small mammal house. Students will be actively involved in looking after the animals, studying their behaviour, biology and upkeep. The centre also includes a small farm with extensive outdoor facilities and wildlife environments. Our tutors have a variety of professional backgrounds, including working in zoos, farming and wildlife rescue.

For students based at Taylor Hill Animal Care Centre, all lessons take place at the centre with an LRC and small refectory on-site. Students will get their hands dirty on this course with a mixture of classroom activity and practical, hands-on lessons.

Students at Hargate Hill are based at working stables with a dedicated classroom space and area for small mammals, an aviary and reptiles. On-site there is also a small café for students to use.

[Click here to take a tour of Taylor Hill Animal Care Centre](#)

[Click here to take a tour of Hargate Hill Equestrian Centre](#)



IT STARTS WITH YOU

ADDITIONAL INFORMATION

You don't need any specific equipment but we do recommend a pair of sturdy shoes or wellington boots! Students can also purchase a college hoodie.

Your timetable will usually be 16 hours a week. If you don't have GCSE Grade 4 in English and maths then resitting these will be built into your study programme.

On your course, you will have the opportunity to complete a two-week work placement. A member of our Work Placement team will work with you to find a suitable placement.

As a Microsoft Showcase College, you can download Microsoft software for free to your device and access free Wi-Fi at college. You can also study Microsoft Office Specialist (MOS) qualifications alongside your study programme.



MEET OUR STUDENTS

“ I chose this course because I am very passionate about the wellbeing of animals and it has always been my dream career to work with them. The facilities at Kirklees College are fantastic, especially all the different species of animal we get to work with. After I complete this course, I hope to study veterinary medicine. ”

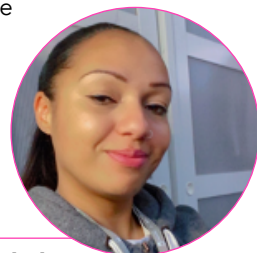
Chelsea Ashton, Level 3 Animal Management



MEET ONE OF OUR SUBJECT TUTORS

“ Hi, I'm Chantelle, one of the Animal Care programme leaders and former student at Kirklees College. My favourite part of the job is taking our students abroad to work on projects. We have visited Malta to volunteer at a cat sanctuary and I have also been to Greece to help one of our student's settle into a long-term project. I look forward to meeting you all and introducing you to all the animals! ”

Chantelle Mcdade



FINANCIAL SUPPORT

We can support you with:

- Applying for bursaries if you're eligible
- Buying uniform and kits
- Free college meals
- Support with travel costs – you can apply for a travel pass before you start or collect a form from college

[Click here for more information](#)



STUDENT SUPPORT

We have a wide range of support available including:

- Dedicated Progress Coach. Your Progress Coach will work with you on a 1:1 basis to support you with your progress, needs and goals.
- Additional learning support. This is available for learners with specialist educational needs and disabilities and is delivered in various forms according to an individual's assessed needs or provisions within an Education and Health Care Plan (EHCP.)
- Counselling service
- Careers service

[Click here for more information](#)



CAREER PROGRESSION

Students can progress to a range of different paths. Students who choose not to go to university are supported in securing employment. Many of our students now work in an animal environment, including working as pet shop assistants, animal groomers or rescue centre workers. Some have set up their own businesses as dog groomers and dog walkers, trained to be veterinary nurses or other veterinary roles.

Our level 3 students can progress to our HNC or go to university. There is a range of degree courses students can access either after level 3 or after completing their HND. Some degree courses our previous students have enrolled on include:

- Zoology
- Wildlife Conservation
- Environmental Management
- Animal Behaviour and Welfare
- Physical Education and Sports Coaching
- Equine Therapy and Rehabilitation
- Zoo Management



VIRTUAL OPEN DAYS



Attend a LIVE Virtual Open Day to find out more information about college life, our centres, facilities and the support available.

The dates for our Summer Virtual Open Days are:

TUESDAY 29 JUNE **WEDNESDAY 30 JUNE**

[VIRTUAL OPEN DAY - Click here to find out more](#)

94%

OF OUR STUDENTS
WOULD RECOMMEND
KIRKLEES COLLEGE

93%

OF OUR STUDENTS
SAID THEIR
TEACHING IS GOOD

95%

OF OUR STUDENTS
SAID THEY HAVE
HAD A GOOD
EXPERIENCE

If you would like to speak to a tutor or have any questions about your course or application, please email applications@kirkleescollege.ac.uk

Enrolment will be in August. More information will be sent out closer to the time.

IT STARTS WITH YOU

STAY CONNECTED



www.kirkleescollege.ac.uk