



**KIRKLEES  
COLLEGE**

# HIGHER EDUCATION COURSE GUIDE 2020-2021

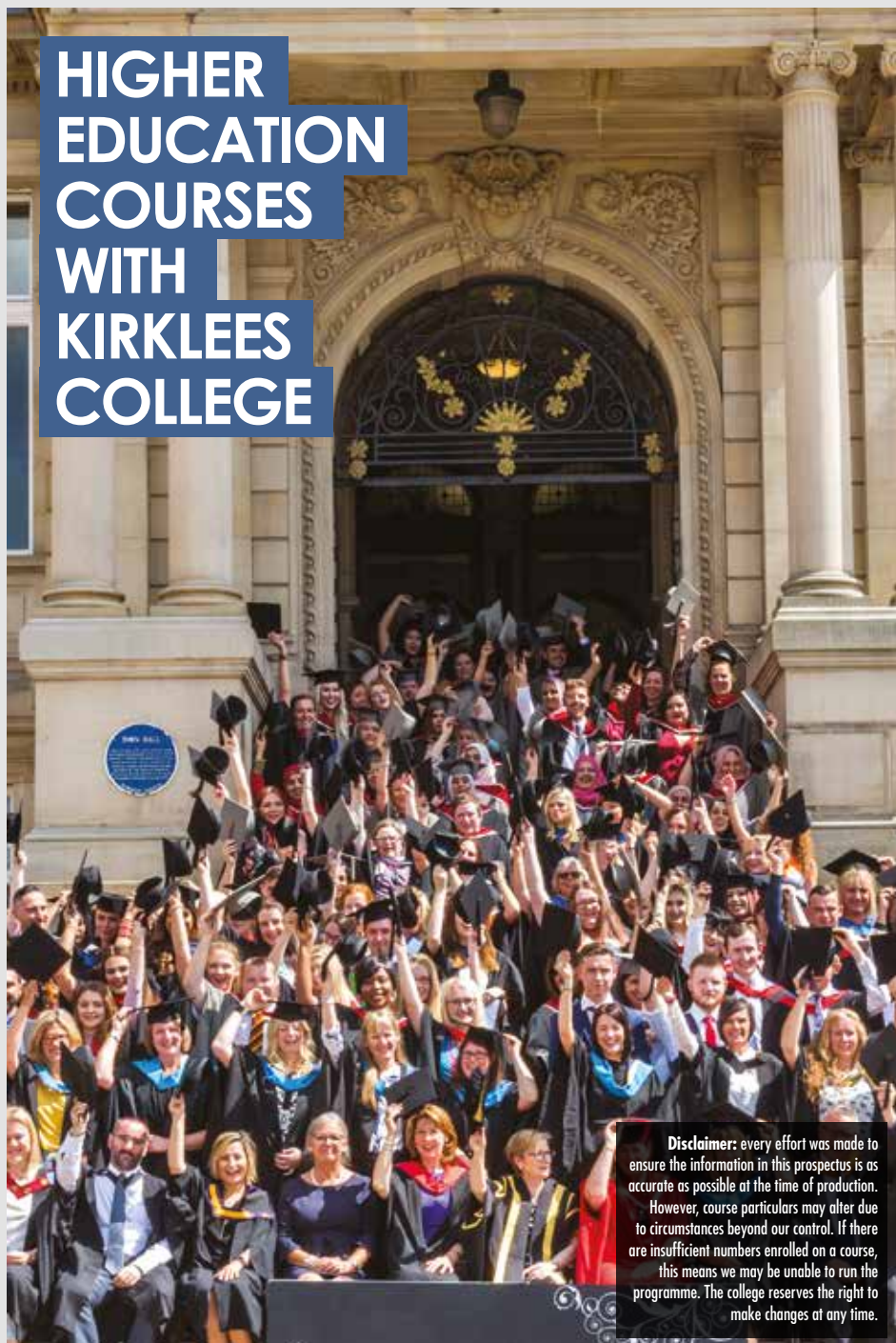


**TEF**

**Silver**

Teaching  
Excellence  
Framework

# HIGHER EDUCATION COURSES WITH KIRKLEES COLLEGE



**Disclaimer:** every effort was made to ensure the information in this prospectus is as accurate as possible at the time of production.

However, course particulars may alter due to circumstances beyond our control. If there are insufficient numbers enrolled on a course, this means we may be unable to run the programme. The college reserves the right to make changes at any time.

# CONTENTS

Higher Education courses with Kirklees College	4-5	Counselling	26-27
TEF and Higher Education qualifications	6-7	Engineering	28-31
Access to HE	8-11	Public services	32-33
Animal management	12-13	Teacher education	34-37
Art and design	14-17	Apprenticeships	38-39
Business	18-19	Case studies	40-41
Childhood studies	20-21	Funding your studies	42-44
Computing	22-23	Advanced Learner Loans	45
Construction	24-25	Progression	46-47
		How to apply	48-49
		Graduation	50-51

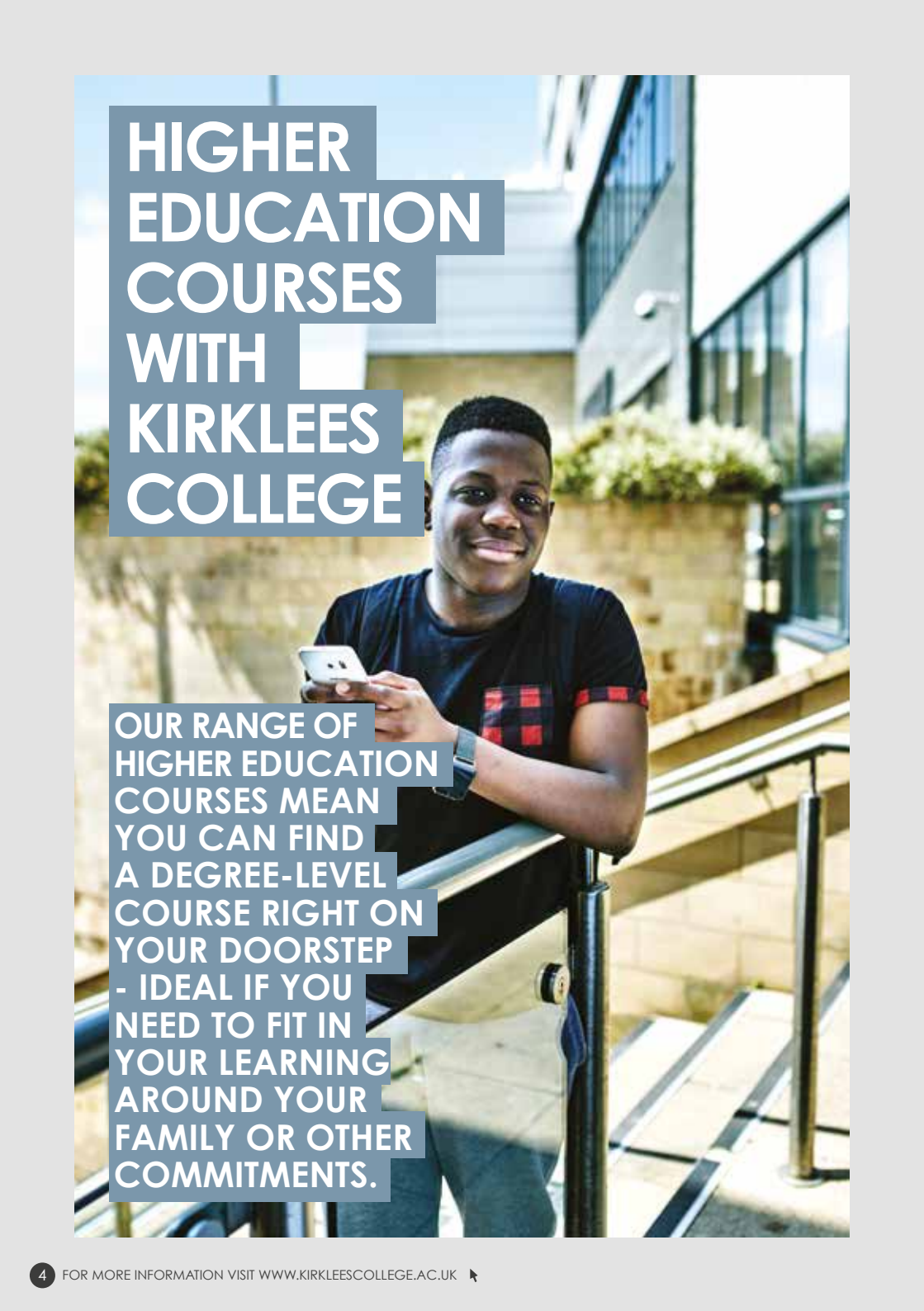


**DALLAS WEEKS -  
JOINT WINNER OF THE  
YORKSHIRE REGIONAL  
STUDENT PHOTOGRAPHER  
OF THE YEAR AWARD,  
BIPP AWARDS 2018.**

FORMER PHOTOGRAPHY STUDENT







# HIGHER EDUCATION COURSES WITH KIRKLEES COLLEGE

OUR RANGE OF  
HIGHER EDUCATION  
COURSES MEAN  
YOU CAN FIND  
A DEGREE-LEVEL  
COURSE RIGHT ON  
YOUR DOORSTEP  
- IDEAL IF YOU  
NEED TO FIT IN  
YOUR LEARNING  
AROUND YOUR  
FAMILY OR OTHER  
COMMITMENTS.



**You can choose to do a Higher National Certificate (HNC) qualification over one year full-time or two years part-time.**

On completion you have a Level 4 qualification and can choose to go on to the Higher National Diploma (HND) for a further year's study at Kirklees College.

---

Or if you want to do a degree, you may be able to go to university and join the course part-way through (see table on page 7).

---

If you're not sure how long you can commit to a course or if it is definitely what you want to do, the HNC gives you the flexibility. After a year you have a qualification – you wouldn't get that if you only completed the first year of a degree!

Many of our tutors combine teaching with their own freelance careers and professional practice, helping students make the link between the classroom and the workplace.

We are justifiably proud of the successes of our students, both in terms of their academic success and also achieving their ultimate goal, whether that is promotion, a change of career or further progression in Higher Education.

We can offer you:

- Lower course fees than a university, and financial support available to help with costs.
- Flexible programmes to fit your need.
- Smaller class sizes and high levels of tutor support.



## TEF SILVER AWARD WINNERS



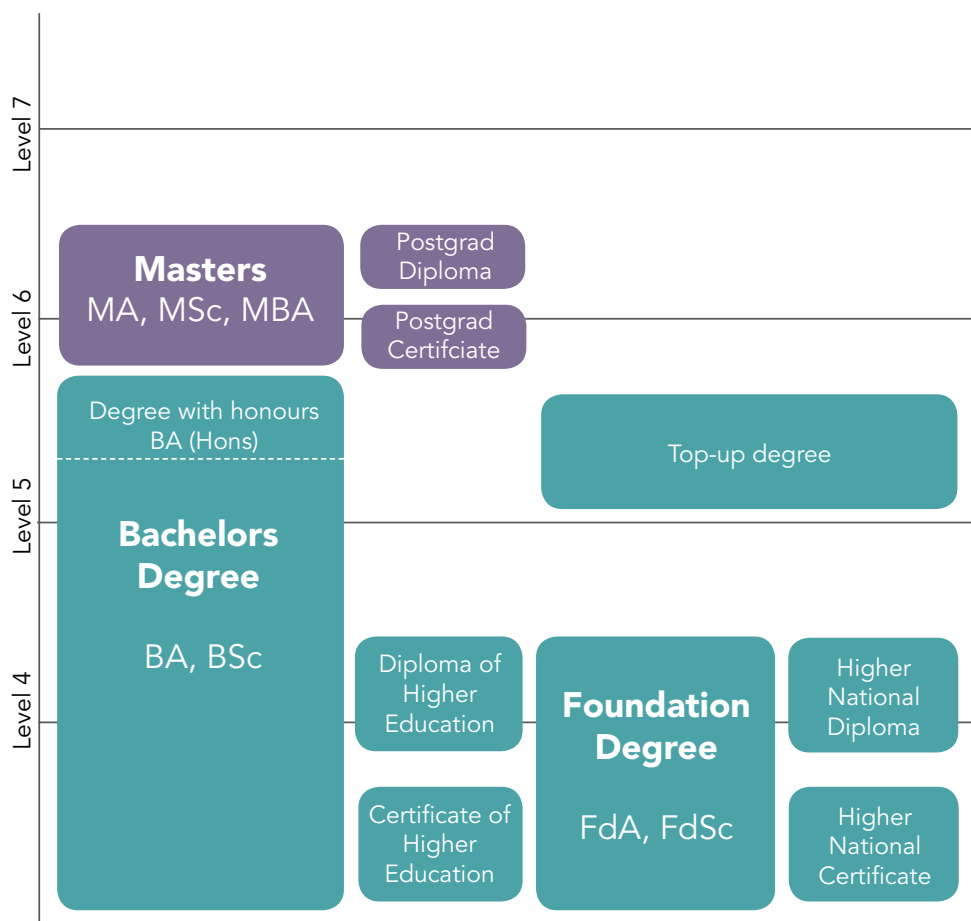
**Teaching  
Excellence  
Framework**

Kirklees College has ranked alongside some of the country's top universities when it comes to higher education teaching provision – gaining a silver in the Government's Teaching Excellence Framework.

The rankings are based on teaching quality, learning environment, and student outcomes and learning gain.

Out of 295 institutions, including universities, colleges and other higher education providers nationwide, Kirklees College was one of 116 to get a silver rating.

# HIGHER EDUCATION QUALIFICATIONS





**ACCESS  
TO HIGHER  
EDUCATION**



## PROGRESSION TO ACCESS TO HE

**Level: 2**

**Centre: Huddersfield or Dewsbury**

**Duration: 1 year**

### Typical entry requirements

GCSE English and maths grade D (3).

### Overview

Equip yourself with the academic skills and vocational subject knowledge to go on to study on our Level 3 Access to HE Diploma (Health Science Professions/Social Sciences/Humanities/Art and Design) and ultimately progress to university.

Personal and academic units of study:

- Organisation and evaluation of study
- Practical presentation skills
- Academic writing skills
- Research skills
- Building a personal portfolio
- Using IT for study
- Prejudice and discrimination
- Understanding diversity within society

Vocational subjects units of study:

- Nutrition, performance and healthy eating
- Physiology and exercise
- Sociology of health
- Health psychology
- Understanding mental health
- Ethical issues in social policy

## ACCESS TO HE COURSES

An Access to Higher Education Course is designed for adults looking to return to education. If you don't have any previous qualifications, been out of education for a while, or if you're an adult looking for a career change then an Access course will enable you to be accepted at a University. Think of it as an educational stepping stone.

## ACCESS TO HE DIPLOMA ART AND DESIGN

**Level: 3**

**Centre: Huddersfield or Dewsbury**

**Duration: 1 year**

### Typical entry requirements

Aged 19+ GCSE English and maths grade C (4) or above and a portfolio of your art work.

### Overview

The step up to Higher Education can be daunting. You need to be prepared. Develop the required skills needed for degree study and gain the experience to increase your confidence.

Experienced lecturers and industry practitioners will give fantastic support and guidance throughout the course. You will learn digital and technical skills and improve your portfolio of work.

Core units:

- Introduction to Art and Design
- Pathway project
- Personal project

Extra units:

- Application to HE
- Academic writing
- Organisation and evaluation



## ADVANCED LEARNER LOANS

Do you know you could be eligible for an Advanced Learner Loan?

**For more information  
see page 45.**

## ACCESS TO HE DIPLOMA HEALTH SCIENCE PROFESSIONS

---

**Level: 3**

**Centre: Huddersfield or Dewsbury**

**Duration: 1 year**

### Typical entry requirements

Aged 19+ GCSE English and maths grade C (4) or above. Science grade C (4) or above is desirable.

### Overview

Develop your skills and self-confidence to progress to university with unrivalled levels of support from experienced and skilled tutors.

Begin your path to a Higher Education course in health science professions with us.

Core units:

- Body structure and function
- Co-ordination and control
- Nutrition and digestion
- Pathogens and disease

Extra units:

- Psychology
- Sociology
- Study Skills

## ACCESS TO HE DIPLOMA SOCIAL SCIENCES

---

**Level: 3**

**Centre: Huddersfield or Dewsbury**

**Duration: 1 year**

### Typical entry requirements

Aged 19+ GCSE English grade C (4) or above and maths grade C (4) or above.

### Overview

Develop your skills and self-confidence to progress to university with unrivalled levels of support from experienced and skilled tutors.

Begin your path to a Higher Education course in social sciences with us.

Core units:

- Sociology
- Psychology

Extra units:

- History
- Study Skills

## ACCESS TO HE DIPLOMA HUMANITIES

---

**Level: 3**

**Centre: Huddersfield or Dewsbury**

**Duration: 1 year**

### Typical entry requirements

Aged 19+ GCSE English grade C (4) or above and maths grade C (4) or above.

### Overview

Develop your skills and self-confidence to progress to university with unrivalled levels of support from experienced and skilled tutors. Begin your path to a Higher Education course in humanities with us.

Core Units:

- History
- English Literature and Language

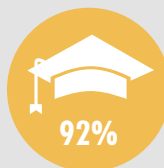
Extra Units:

- Sociology
- Study Skills



98% of Access to HE students at Kirklees College went to university or into employment in 2016/17

**Source: Kirklees College**



92% of Access to HE students at Kirklees College got their first choice university place.

**Source: Kirklees College**



# ANIMAL MANAGEMENT



# ANIMAL MANAGEMENT HNC

**Level: 4**

**Centre: Taylor Hill Centre**

**Duration: 1 year (full time);  
2 years (part time)**

## Typical entry requirements

BTEC Extended Diploma at MPP or 64 UCAS points (see page 49) and GCSE English and Maths grade C (4) or above.

## Overview

The Higher National Certificate (HNC) in Animal Management has been developed for individuals who have a passion for animals and are keen to further develop their knowledge of animal health, welfare and biology.

It has been designed to allow students to master essential study skills, husbandry techniques and knowledge to help further their career options.

Units could include:

- Animal behaviour
- Animal health and welfare
- Business and the business environment
- Managing a successful project (Pearson set unit)
- Ecological principles
- Exotics
- Management of animal collections
- Anatomy and physiology

PROGRESS TO  
HND

AVERAGE WAGE



£11.96 p/h

NUMBER OF JOBS  
IN 2018



679,786

FORECAST  
JOBS 2022



485,718

JOBS CHANGE  
2017-2022



12,144

ANNUAL  
OPENINGS



18,934

**Source: EMSI.** For Agriculture, Environment and Animal Care careers, England.





# ART & DESIGN

## FOUNDATION DIPLOMA ART AND DESIGN

---

**Level: 3**  
**Centre: Dewsbury**  
**Duration: 1 year**

### Typical entry requirements

You should have a minimum of 1 A level or equivalent, plus 3 GCSE passes at grade C (4), including English and maths, plus a portfolio of your art work.

### Overview

This course will build your confidence and develop your skills in art and design to prepare you for university.

As well as having an opportunity to work across a range of different art-based principles and develop your technical and digital skills, you'll also be able to review specialist art streams/subjects and get guidance to inform decisions about future career goals or HE learning programmes.

We'll support you to find your 'creative voice', help boost your existing skills and portfolio to degree standard and introduce a range of practices from critical thinking techniques to exploration of a variety of pathways and preparation for HE application.

You can then go on to one of our art and design HNC courses or progress to a degree course at university.

## PHOTOGRAPHY HNC

---

**Level: 4**  
**Centre: Dewsbury**  
**Duration: 1 year**

### Typical entry requirements

BTEC Extended Diploma at MPP or 64 UCAS points (see page 49) or Foundation Diploma and GCSE English and Maths grade C (4) or above, plus a portfolio of your art work.

### Overview

The HNC/HND Photography course provides an introduction into a wide range of photographic genres and professional career opportunities. This is an introductory programme which offers those with an interest in photographic media the opportunity to develop new and existing knowledge, skills and experience.

Over one year, you will concentrate on a number of different genres of photography and activities and tasks will encompass studio and location photography, camera craft, concept development, image editing and post production to name but a few.

The programme enables each student to explore and engage with different avenues, techniques and processes and develop an understanding of where their area of interest lies. There is a focus on a real world, industry led curriculum designed to help individual students reach their potential.

Upon successful completion of the HNC, you will be able to progress onto the HND in Photography for a further year of study.

You can then go on to one of our art and design HNC courses or progress to a degree course at university.

# ART AND DESIGN (ART PRACTICE) HNC

**Level: 4**

**Centre: Dewsbury**

**Duration: 1 year**

## Typical entry requirements

BTEC Extended Diploma at MPP or 64 UCAS points (see page 49) or Foundation Diploma and GCSE English and Maths grade C (4) or above, plus a portfolio of your art work.

## Overview

This unique and distinct course explores the dynamic between fine art and design practice. It unites essential concepts and philosophies to provide a freedom of visual enquiry and allows you to reflect on the cultural and technological changes of contemporary society and art practice.

It is a course with its heart and focus firmly placed on each individual student. The curriculum actively responds to your interests, strengths and aspirations through the acquisition of traditional, innovative and entrepreneurial skills.

Where possible, you will have your own dedicated studio space to freely express ideas and concepts and undertake on the spot critical reviews of ideas, works and assessment.

The course also comprises of practical workshops and demonstrations, lectures, guest lecturers, competitions, national and international visits and gallery visits.

It will culminate in an end of year exhibition giving you the opportunity to showcase your work in a professional setting to members of the public and industry professionals.

Units could include:

- Professional development
- Contextual studies
- Individual project
- Techniques and processes
- Media practices
- Material practices
- Study Skills



### AVERAGE WAGE



£13.78 p/h

### JOBS CHANGE 2017-2022



18,769

### FORECAST JOBS 2022



594,147

### NUMBER OF JOBS IN 2018



582,036

### ANNUAL OPENINGS



14,493

**Source: EMSI.**

For Creative and Design careers, England.







AVERAGE SALARY



£27k

NUMBER OF JOBS  
IN 2018



3,568,654

JOBS CHANGE  
2017-2022



118,190

ANNUAL  
OPENINGS



99,695

FORECAST  
JOBS 2022



3,568,654

Source: EMSI.  
For Business and  
Administrative careers,  
England.

# BUSINESS

## BUSINESS HNC

**Level: 4**

**Centre: Dewsbury**

**Duration: 1 year (full time);**

**2 years (part time)**

### Typical entry requirements

BTEC Extended Diploma at MPP or 64 UCAS points (see page 49) and GCSE English and Maths grade C (4) or above.

### Overview

This course offers a broad introduction to business via a mandatory core of learning, while allowing you to acquire specialist skills and experience through the selection of optional units across a range of occupational sectors.

You will gain a wide range of sector knowledge tied to practical skills gained in research, self-study, directed study and workplace scenarios.

Units could include:

- Business and the Business Environment
- Marketing Essentials
- Human Resource Management
- Management and Operations
- Management Accounting
- Managing a Successful Business Project
- Innovation and Commercialisation
- Entrepreneurship and Small Business Management

You can also combine HNC Business with a Level 3 CIM marketing qualification or a Level 2 AAT accounting qualification.



## BUSINESS HND

**Level: 4**

**Centre: Dewsbury**

**Duration: 1 year (full time);**

**2 years (part time)**

### Typical entry requirements

HNC Pass in Business or related subject and GCSE English and Maths grade C (4) or above.

### Overview

The HND in Business is designed to develop students as professional, self-reflecting individuals able to meet the demands of employers in the business sector and adapt to a constantly changing world. The qualification aims to widen access to higher education and enhance the career prospects of those who undertake them.

Units could include:

- Research Project
- Organisational Behaviour
- Business Strategy
- Business IT Systems
- Developing Individuals, Teams and Organisations
- Integrated Marketing Communications
- Pitching and Negotiating Skills

You can also combine HND Business with a CIM Marketing or AAT accounting qualification.





# CHILDHOOD STUDIES



# HNC ADVANCED PRACTICE IN EARLY YEARS EDUCATION

**Level: 4**

**Centre: Dewsbury**

**Duration: 1 year (full time);**

**2 years (part time)**

## Typical entry requirements

BTEC Extended Diploma at MPP or 64 UCAS points (see page 49) and GCSE English grade C (4) or above.

## Overview

This qualification replaced the HNC in Advanced Practice in Work with Children and Families, in response to national changes, including the introduction of the Early Years Educator (EYE) criteria.

This course will provide you with the knowledge, skills and understanding required for success in employment in the early years sector at supervisory or management level or for progression to an undergraduate degree or further professional qualification.

Units could include:

- Professional development through reflective practice
- Communication, values and leadership for advanced early years practitioners
- Theories of development and progress – birth to seven years
- Early years curriculum, play and learning
- Safeguarding, children's welfare and child protection
- Creating safe environments in early years settings
- The whole child approach in early years practice



**AVERAGE  
SALARY**



**£27k**

**NUMBER OF JOBS  
IN 2018**



**1,381,361**

**JOBS CHANGE  
2017-2022**



**38,679**

**ANNUAL  
OPENINGS**



**39,000**

**FORECAST  
JOBS 2022**



**1,045,889**

**Source: EMSI.**

For Childcare and  
Education careers, UK.



**AVERAGE  
SALARY**



**£28k**

**FORECAST  
JOBS 2022**



**1,212,078**

**JOBS CHANGE  
2017-2022**



**69,313**

**NUMBER OF  
JOBS IN 2018**



**1,170,496**

**Source: EMSI.**  
For Digital  
careers,  
England.

**ANNUAL  
OPENINGS**



**12,237**

# COMPUTING

## COMPUTING HNC

---

**Level: 4**

**Centre: Dewsbury**

**Duration: 1 year (full time);**

**2 years (part time)**

### Typical entry requirements

BTEC Extended Diploma at MPP or 64 UCAS points (see page 49) and GCSE English and Maths grade C (4) or above.

### Overview

Further your studies and start to develop a career in Computing or Information Technology.

This course offers students a broad introduction to the field of computing as well as the opportunity to acquire skills and experience within software development, data science, project management and soft skills.

The course is delivered by experienced lecturing staff many of whom have industry experience in IT areas such as software engineering, programming, project management and technical support.

You will also be supported by a rich guest lecture series, be taught to work within a project team and apply troubleshooting and problem solving skills.

Units could include:

- Programming
- Networking
- Professional practice
- Database design and development
- Security
- Managing a successful computing project
- Computer systems architecture
- Website Design & Development.



## COMPUTING HND

---

**Level: 4**

**Centre: Dewsbury**

**Duration: 1 year (full time);**

**2 years (part time)**

### Typical entry requirements

HNC Computing or other Level 4 qualification with relevant subject knowledge.

### Overview

This course offers students a broad outline to Computing via a mandatory core of learning, while allowing for the acquisition of skills and experience through the selection of optional units across a range of occupational sectors. This builds underpinning core skills while preparing the student for subject specialisation at a higher level.

The qualification, while building on knowledge gained on the HNC, offers a wide range of sector knowledge tied to practical skills, gained in research, self and directed study. It is delivered by lecturing staff who have industry experience in a variety of areas.

Progress to degree-level study.



# CONSTRUCTION

# HNC IN CONSTRUCTION AND THE BUILT ENVIRONMENT

**Level: 4**

**Centre: Huddersfield**

**Duration: 2 years, Mondays September through to May (part time)**

## Typical entry requirements

BTEC Extended Diploma at MPP and GCSE English and maths grade C or above. Level 3 Advanced Apprenticeship or one A level in a relevant subject (e.g. maths, science)> At least 2 years relevant experience preferably within the construction sector. UCAS points required: 64.

## Overview

The purpose of BTEC Higher Nationals in Construction and The Built Environment are to develop you as a professional, self-reflecting individual able to meet the demands of employers in the construction and the built environment sector and adapt to a constantly changing world. To achieve this you will be engaged in a dynamic, interactive and reflective learning experience. The programme has been developed so that you will have a distinctive focus on entry into work following a curriculum that embeds employability, has a strong commitment to ethics and diversity and introduces you to research.

Units will include:

Individual Project

- Construction Technology
- Construction Practice and Management
- Science and Materials
- Legal and Statutory Responsibilities in Construction
- Construction Information
- Building Information Modelling
- Site Supervision and Operations

You will be required to produce a portfolio of evidence containing

written assignments, examinations, presentations and Project Work.

A Project will be set and overseen by in-house tutors in conjunction with an external body (Contractor or Consultant).

Your work is internally assessed and externally moderated.

Progress to HND in Construction and Project management or a B.Sc. in a construction related discipline (e.g. Civil Engineering; Construction and Architecture).

This course has 'accreditation from Pearson Education Ltd'.

**Subject to validation.**

NUMBER OF JOBS  
IN 2018



9811,497

NUMBER OF JOBS  
IN 2022



1,006,749

JOBS CHANGE  
2017-2022



38,470

AVERAGE  
SALARY



£29,213

**Source: EMSI for Construction careers, England.**





# COUNSELLING

# THERAPEUTIC COUNSELLING DIPLOMA

**Level: 4**

**Centre: Dewsbury**

**Duration: 2 years (part time)**

## Typical entry requirements

An interview is essential and you must hold a Level 3 counselling-related qualification or equivalent. You will also need to complete and submit some pre-interview tasks along with your application.

## Overview

This course is for people wishing to train to become professional counsellors. You will develop an understanding of the essential relationship between counsellors, as professionals, and the organisations and other people with which they may work.

You will explore areas of potential conflict, especially through the existence of different ethical standards and principles.

You will also reflect on the importance of managerial supervision and casework supervision.

You will explore the impact diverse culture and heritage can have on the client/counsellor therapeutic relationship in a multicultural society. You will also examine power issues within the counselling process.

You will analyse one major therapeutic model to influence, inform and empower your practice as a counsellor. You will also compare other therapeutic models with the major model.

You will demonstrate a range of skills illustrating your development as a practitioner. In addition, you will learn that counselling is a managed activity, with emphasis being given to the importance of opening and closing sessions and a series of sessions.

**ABC Awards**  
Showcase Centre

**WE ARE AN ABC AWARDS  
SHOWCASE CENTRE FOR  
COUNSELLING COURSES**

**AVERAGE  
SALARY**



£22k

**TYPICAL  
EDUCATION LEVEL  
FOR CAREER**



4-6

**CAREER GROWTH  
OVER LAST 2 YEARS**



2.4%



# ENGINEERING

## ENGINEERING BRIDGING COURSE

---

**Level: 3**

**Centre: Engineering**

**Duration: 1 year (part time)**

### Typical entry requirements

Level 3 engineering or science qualification. Other appropriate qualifications will be considered individually, including those offered by students returning to education.

### Overview

This course is a great way to prepare for progression onto our HNC courses. If you want to improve your mathematical and analytical skills in preparation for an HNC Engineering qualification, this course is for you.

Units could include:

Mathematics for Engineering Technicians:

- Algebraic methods
- Trigonometric methods and standard formula to determine areas
- Statistical methods to display data
- Elementary calculus techniques

Further Mathematics for Engineering Technicians:

- Advanced graphical techniques
- Applying algebraic techniques
- Manipulation of trigonometric expressions and application of trigonometric techniques
- Application of calculus

Mechanical Principles and Applications:

- Determining the effects of loading in static engineering systems
- Determining work, power and energy transfer in dynamic engineering systems
- Determining the parameters of fluid systems
- Determining the effects of energy transfer in thermodynamic systems

## MECHANICAL ENGINEERING HNC

---

**Level: 4**

**Centre: Engineering**

**Duration: 18 months / 2 years (part time)**

### Typical entry requirements

BTEC Extended Diploma in an engineering subject at MPP or 64 UCAS points (see page 45) and GCSE English and Maths grade C (4) or above.

### Overview

An HNC in an engineering discipline is considered to be one of the benchmark qualifications in the industry.

This course is ideal for anybody looking to study mechanical engineering at a higher level. It is suitable for careers which include varied technical work, such as mechanical or communication design, manufacture, maintenance or technical services area of the engineering industry.

Units could include:

- Engineering design
- Engineering maths
- Engineering science
- Managing a professional engineering project (Pearson set)
- Mechatronics
- Mechanical principles
- Automation, robotics and programmable logic controllers
- Computer Aided Design (CAD) and Manufacture (CAM)

## ELECTRICAL AND ELECTRONIC ENGINEERING HNC

**Level: 4**

**Centre: Engineering**

**Duration: 18 months / 2 years (part time)**

### Typical entry requirements

BTEC Extended Diploma in an engineering subject at MPP or 64 UCAS points (see page 45) and GCSE English and Maths grade C (4) or above.

### Overview

An HNC in an engineering discipline is considered to be one of the benchmark qualifications in the industry.

This course is ideal for anybody looking to study electrical and electronic engineering at a higher level. It is suitable for careers which include varied technical work, such as mechanical or communication design, manufacture, maintenance or technical services area of the engineering industry.

Units could include:

- Engineering design
- Engineering maths
- Engineering science
- Managing a professional engineering project (Pearson set)
- Automation, robotics and programmable logic controllers
- Digital principles
- Electronic circuit and devices

## MECHANICAL ENGINEERING HND

**Level: 5**

**Centre: Engineering**

**Duration: 18 months / 2 years (part time)**

### Typical entry requirements

HNC in an engineering subject.

### Overview

An HND in an engineering discipline is considered to be one of the benchmark qualifications in the industry.

This course is ideal for anybody looking to study mechanical engineering at a higher level. It is suitable for careers which include varied technical work, such as mechanical or communication design, manufacture, maintenance or technical services area of the engineering industry.

Units could include:

- Research Project (Mandatory)
- Professional Engineering Management (Mandatory)
- Further Maths ( Specialist unit Mandatory)
- Advanced Mechanical Principles ( Specialist unit Mandatory)
- Virtual Engineering ( Specialist unit Mandatory)
- Plus two further units

**Source: EMSI.**

For Engineering and Manufacturing careers, England.

AVERAGE WAGE



£15.81 p/h

NUMBER OF JOBS  
IN 2018



1,455,801

JOBS CHANGE  
2017-2022



45,459

ANNUAL  
OPENINGS



32,908

FORECAST  
JOBS 2022



1,486,320



# ELECTRICAL AND ELECTRONIC ENGINEERING HND

**Level: 5**

**Centre: Engineering**

**Duration: 18 months / 2 years (part time)**

## Typical entry requirements

HNC in an engineering subject.

## Overview

An HND in an engineering discipline is considered to be one of the benchmark qualifications in the industry.

This course is ideal for anybody looking to study mechanical engineering at

a higher level. It is suitable for careers which include varied technical work, such as mechanical or communication design, manufacture, maintenance or technical services area of the engineering industry.

Units could include:

- Research Project (Mandatory)
- Professional Engineering Management (Mandatory)
- Further Maths ( Specialist unit Mandatory)
- Advanced Mechanical Principles ( Specialist unit Mandatory)
- Virtual Engineering ( Specialist unit Mandatory)
- Plus two further units





**PUBLIC  
SERVICES**

# PUBLIC SERVICES HNC

**Level: 4**

**Centre: Dewsbury**

**Duration: 1 year (full time);**

**2 years (part time)**

## Typical entry requirements

BTEC Extended Diploma at MPP or 64 UCAS points (see page 45) and GCSE English and Maths grade C (4) or above.

## Overview

This course is ideal for anybody looking to study Public Services at degree level and progress on to a career in the sector. This programme is a specialist vocational programme with a strong work related emphasis.

The course provides specialist work related programme of study that covers the key knowledge, understanding and practical skills required in the Public Services and also offers particular specialist emphasis through the choice of specialist units.

You will learn through practical assignments that focus on the real-world challenges you will face in your career.

Units could include:

- Small-scale research projects in Public Services
- Organisations and behaviour
- Fair treatment in Public Services
- Sociological aspects of the Public Services in contemporary society
- Health and safety management in Public Services
- Justice and punishment
- Personal outdoor skills
- Public service activity management



### AVERAGE WAGE



£16.80 p/h

### NUMBER OF JOBS IN 2018



1,971,803

### JOBS CHANGE 2017-2022



65,793

### ANNUAL OPENINGS



6,852

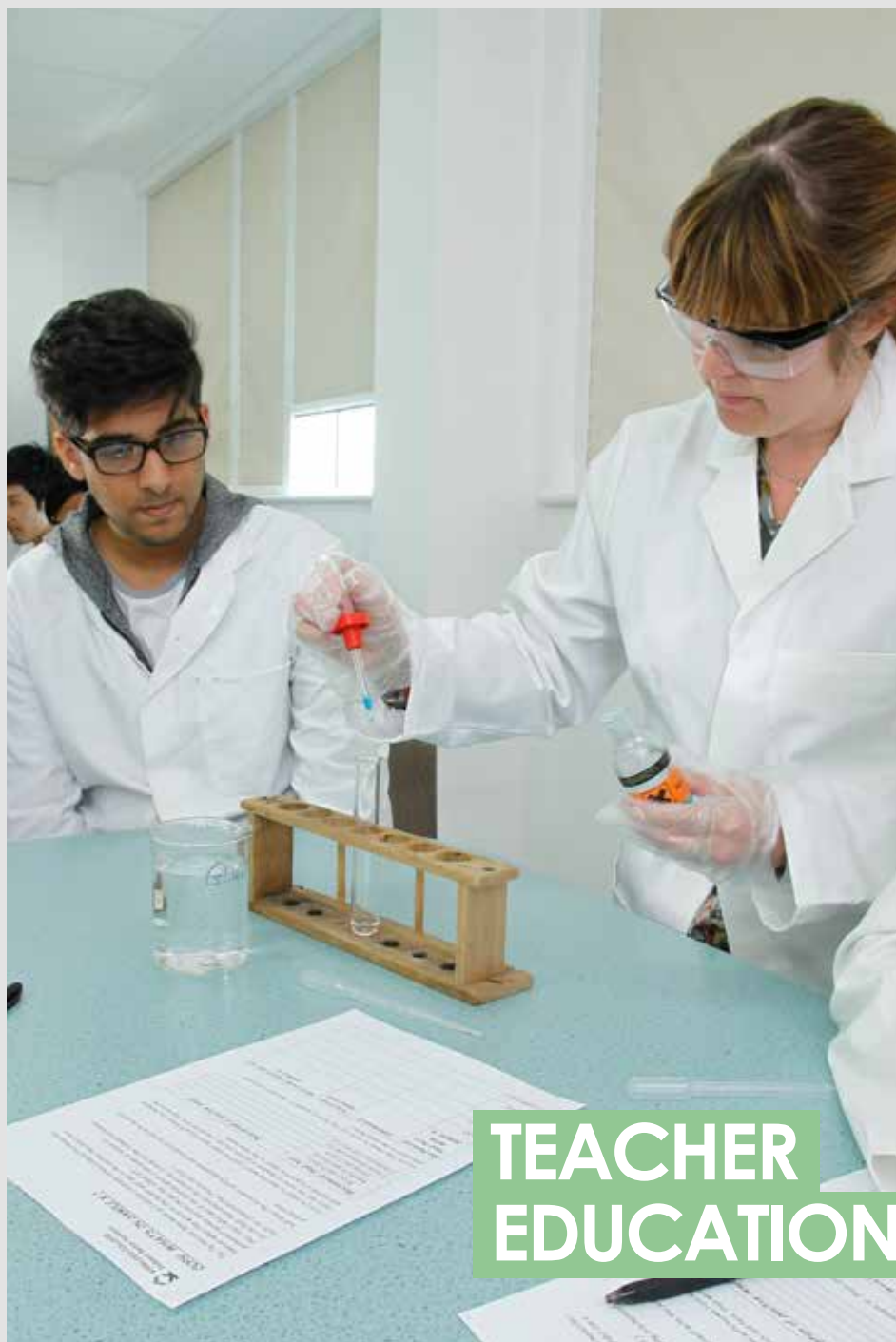
### FORECAST JOBS 2022



2,157,516

**Source: EMSI.**

For Protective Services careers, England.



# TEACHER EDUCATION

## INTERNAL QUALITY ASSURANCE OF ASSESSMENT PROCESSES AND PRACTICE TQUK AWARD

**Level: 4**

**Centre: Huddersfield**

**Duration: 6 months (part time)**

### Typical entry requirements

Level 3 Certificate in Assessing Vocational Achievement or D32/33.

### Overview

This qualification provides professional recognition for those working in training assessment and quality assurance.

It will further develop your skills and knowledge if you're working in, or hoping to work in assessment and internal quality assurance in accredited and non-accredited learning, the NQF and the QCF.

The qualification consists of a mixture of units, with some competence-based and some knowledge-based.

Successful achievers will understand the principles of assessment and internal quality assurance and have the knowledge to develop and improve systems.

AVERAGE  
SALARY



£25k



22%

In the UK, 22% of Further Education teaching professionals are aged 55 or above. They will likely retire in the next 10 years, creating a demand for new workers.

CAREER GROWTH  
OVER LAST 2 YEARS



4%

## EDUCATION AND TRAINING TQUK DIPLOMA

**Level: 5**

**Centre: Huddersfield**

**Duration: 2 years (part time)**

### Typical entry requirements

You should have a Level 3 qualification in the subject you intend to teach. You'll need access to 50 hours of teaching practice per year in a recognised lifelong learning location. You will have an initial assessment to indicate that you are working at Level 2 in English and maths.

### Overview

Develop the skills you need to work as a teacher in the lifelong learning sector, designing your own curriculum and teaching a range of levels, subjects and learner types.

If you are working as or planning to become a teacher in further, adult or continuing education, this course is for you.

A minimum of 50 hours of teaching is required in both year one and year 2 of the course.

The course includes:

- Teaching, learning and assessment in education and training
- Theories, principles and models in education and training
- Inclusive practice
- Understanding and managing behaviours in a learning environment
- Developing teaching, learning and assessment in education and training
- Wider professional practice in education and training
- Developing, using and organising resources within a specialist area
- Teaching in a specialist area



## CERTIFICATE IN ENGLISH TEACHING TO ADULTS (CELTA)

---

**Level: 5**

**Centre: Huddersfield/Dewsbury**

**Duration: 6 months**

### Typical entry requirements

You must be at least 18 years old and have 2 A levels and 3 GCSEs or equivalent, a command of English, both written and spoken, adequate to follow the course and complete the assignments.

### Overview

CELTA is one of the world's foremost initial qualifications for people who want to become professional teachers of English language.

The benefit of the programme is that it gives candidates a good base from which to enter employment either in the UK or abroad.

The course enables candidates to acquire essential subject knowledge and familiarity with the principles of effective teaching, as well as gain a range of practical skills for teaching English to adult learners, and applying your learning in a real context. You will have six hours' teaching practice as part of the course.

The main units of learning are:

- Language awareness
- The learner
- The teacher and the teaching/learning context
- Planning for effective teaching of adult learners of English
- Classroom management and teaching skills for teaching English to adults
- Resources/materials for teaching English to adults
- Professional development for teachers of English to adults

## CERTIFICATE/PROFESSIONAL GRADUATE CERTIFICATE IN EDUCATION (LIFELONG LEARNING)

---

**Level: 5 and 6**

**Centre: Huddersfield/Dewsbury**

**Duration: 2 years (part time)**

### Typical entry requirements

Certificate in Education (Lifelong Learning): Minimum Level 3 qualification and significant work experience in the subject you teach. You will have an initial assessment to indicate you are working at Level 2 in English and maths.

Professional Graduate Certificate in Education (Lifelong Learning): A UK first degree or equivalent and relevant work experience in the subject field. You must also hold qualifications at a minimum of Level 3 in the subject area you teach, if this is different from your degree.

Applicants must normally be in paid employment as a teacher or trainer, with a minimum of 100 hours, experience with at least 50 in any one year, in a recognised training or educational establishment. Voluntary teaching may be allowed in certain circumstances.

### Overview

A full teaching qualification for those wanting to teach in further, higher and adult education or the 14+ school sector.

You will plan and design learning materials, assess students and evaluate learning and teaching and study professional issues in education and training.

These courses help you develop your teaching skills, reflect on current ideas about education and training and creatively explore professional opportunities open to you.

Units may include:

- Teaching learning and assessment
- Personal and professional development
- Teaching in a specialist subject
- Curriculum and professional issues

## POSTGRADUATE CERTIFICATE/ POSTGRADUATE DIPLOMA IN EDUCATION (LIFELONG LEARNING)

**Level: 6 and 7**

**Centre: Huddersfield/Dewsbury**

**Duration: 2 years (part time)**

### Typical entry requirements

A UK first degree at 2:2 or above and relevant work experience in the subject field. You must also hold qualifications at a minimum of Level 3 in the subject area you teach, if this is different from your degree.

Applicants must normally be in paid employment as a teacher or trainer, with a minimum of 100 hours' experience with at least 50 in any

one year, in a recognised training or educational establishment. Voluntary teaching may be allowed in certain circumstances.

### Overview

A full teaching qualification for those wanting to teach in further, higher and adult education or the 14+ school sector.

You will plan and design learning materials, assess students and evaluate learning and teaching and study professional issues in education and training.

These courses help you develop your teaching skills, reflect on current ideas about education and training and creatively explore professional opportunities open to you.

The courses include modules on:

- Teaching learning and assessment
- Personal and professional development
- Teaching in a specialist subject
- Curriculum and professional issues

*University of*  
**HUDDERSFIELD**  
Inspiring global professionals



# HIGHER LEVEL APPRENTICESHIP



£

£150,000

FACT: Higher apprentices could earn £150,000 more on average over their lifetime compared to those with Level 3 vocational qualifications  
[www.gov.uk](http://www.gov.uk) 2017



We train approximately 2,000 apprentices over 30 occupational areas.

Our apprentices are employed at over 1,000 companies throughout Kirklees and surrounding areas.

Kirklees College has an enviable track record of quality and success, built up over many years working in partnerships with employers.

Apprentices learn the right skills that employers want, gain great work experience and earn a wage.

Higher level Apprenticeships can be a great alternative to university, but without the debt.

Some of the higher level Apprenticeships available for 2020/2021 include:

- Accountancy Level 4
- Business Administration Level 4
- Care Leadership and Management Level 5
- Cyber Security Technologist Level 4
- Leadership and Management Level 5
- Management Level 4
- Network Engineer Level 4

---

**New Apprenticeships are being introduced all the time.**

**For current vacancies visit [www.kirkleescollege.ac.uk/apprenticeships](http://www.kirkleescollege.ac.uk/apprenticeships)**

---



# CASE STUDIES



## **MISBAH YOUNIS**

22

FROM DEWSBURY  
STUDIED CHILDCARE  
WORKING AS A TEACHING  
ASSISTANT HOPING TO GO INTO  
CHILD NURSING

---

"I chose Kirklees College because it was in my hometown which made it easier for me to travel to. I also studied my Level 3 childcare here and got to see that the college is a great place to learn with supportive teachers which led me to doing HE here too.

"What I liked best about the course was it taught me a lot of things I had never heard of before but also gave me a broader knowledge about children and people who work with them which has helped me at schools.

"I'm hoping to go into child nursing as that is something I'd personally love to do."



## **NATHAN MCCANN**

19

FROM HUDDERSFIELD  
STARTED ON LEVEL 3 AND  
PROGRESSED TO LEVEL 4 HNC  
PUBLIC SERVICE

---

"I chose this course because it's specific to what I want to do in the future. We're not just stuck in a classroom, we go outside, and we get to do different activities. It's not boring and looking at other colleges I was thinking about applying, this college has stood out and exceeded my expectations.

"That's the reason why I chose it and why I love it. The tutors are great and if I need any help they are always there to offer support.

For my course specifically, the tutors are public service specialists, which helps students even more because they have the knowledge and experience in that certain area."





**JADE ASTBURY**

20

FROM HUDDERSFIELD

STUDIED ACCESS TO HE SOCIAL  
SCIENCE

GOING TO UNIVERSITY OF  
ABERYSTWYTH TO STUDY  
PSYCHOLOGY

---

"I would not have been anywhere near as prepared for university without doing the Access to HE course. You learn how to write essays, do self-study and learn how to reference – skills that you wouldn't get doing A-levels. I just didn't have the courage to aim towards university when I left school. I feel more prepared for university in other ways now too.

"I feel like I have more confidence and life experience and have learned budgeting and money management skills through working and saving money. I feel like waiting and doing it this way, I'm really set up for university and a lot more confident about it."



**JOEL ONOKOKO-YONGO**

30

FROM HUDDERSFIELD

STUDIED BUSINESS

WORKING AT TGI FRIDAYS  
AND HOPING TO GO INTO  
MANAGEMENT

---

"Studying HE at Kirklees College has given me great skills and opened my mind. It's a smaller environment than university, so the teachers had time to help students in a more personal way.

"The best thing about the course was what I learned has been useful in my work life. I would be happy to come back to Kirklees College. I'm hoping to finish my management courses and apply for a manager position."



# FUNDING YOUR STUDIES

WITH THE COST OF  
UNIVERSITY DEGREES  
RISING, YOU MAY THINK  
HIGHER EDUCATION IS  
OUT OF YOUR REACH  
FINANCIALLY. BUT  
UNIVERSITY IS NOT YOUR  
ONLY OPTION.

STUDYING A HIGHER EDUCATION COURSE COULD BE THE BEST INVESTMENT YOU EVER MAKE – AND THERE IS MORE FINANCIAL HELP AVAILABLE THAN YOU MIGHT THINK.

## TUITION FEES

Tuition fees at Kirklees College are significantly lower than universities and other colleges in the area. These fees cover the cost of your tuition, registration and exams.

---

The Association of Colleges (AoC) revealed that HE students who study in FE colleges are likely to leave college with around £17,500 less debt than if they had studied their qualifications at university.

---

With lower tuition fees, the chance to live at home, work part time, and reduce travel costs, studying a HE course at a further education college is a fantastic way to gain high quality qualifications. Our student financial support team is happy to provide information, advice and guidance on any aspect of student finance and budgeting.

## ADDITIONAL SUPPORT

You may be eligible for additional support if you:

- have a disability, mental health condition or specific learning difficulty
- have one or more dependent children

- have an adult member of the family who depends on you financially
- claim income-related benefits or are aged 60 or above
- are experiencing financial hardship

You can find more information at:  
**[www.direct.gov.uk/studentfinance](http://www.direct.gov.uk/studentfinance)**

Students starting university or college can apply for loans to help with their tuition fees and living costs. How much money you get depends on if you study full time or part time and on your living circumstances.

**Tuition fee loan** for full time and part time students - this covers the fees you're charged each year for your course and is paid directly to college. To qualify, your part-time course needs to be at least 25 per cent of an equivalent full time course each year, for example four years instead of one year full time.

**Maintenance loan** to pay living costs for full time students only. This loan is paid into your bank account at the start of each term. The exact amount full time students can borrow depends on family income, where you live, what year of study you're in, and what help you get through the Maintenance Grant.

## BURSARIES

If you receive a full HE maintenance or student support grant, you may also be eligible for a bursary:

**Progression Bursaries** - Students progressing within college from Level 3 to HE can receive a phased cash payment of £500 in the first year of study.

**Local Student Bursaries** - For students with a permanent West Yorkshire postcode accepted on to an HE programme at college, a phased cash payment of £500 can be made in the first year of study.

**STEM Bursaries** - For Engineering or Process Manufacturing courses, a phased cash payment of £500 can be made during each year of study (excluding any repeat year). Students receiving this are not eligible for any other bursary.

## Widening Access Bursaries:

**Care Leaver Bursary** – for students who have left local authority care in the last two years, a phased cash payment of £1,000 can be made during each year of study. Attendance must be 85 per cent or above in the first the first three months (other than mitigating circumstances).

**Full-time Carer Bursary** – for applicants with full-time carer responsibilities a phased cash payment of £1,000 can be made during each year of study.

**Access to HE Diploma Bursary** – for students who have successfully completed an Access to HE Diploma programme and progressed to HE, a phased cash payment of £1,000 can be made in the first year.

---

If you require further information please contact the financial support team at Kirklees College: email [finsupp@kirkleescollege.ac.uk](mailto:finsupp@kirkleescollege.ac.uk) or call (freephone) **0800 804 6134**.

---



# ADVANCED LEARNER LOANS

## MAKING THE RIGHT CHOICE

It's important you consider your own circumstances and look into all options for paying for your course before choosing to take out a loan. You can get impartial money advice from the Money Advice Service at [moneyadviceservice.org.uk](https://moneyadviceservice.org.uk)

Advanced Learner Loans help you pay the fees charged by approved colleges and training organisations in England.

Most learners aged 19 and over, studying at Level 3 and Level 4 (which includes Access, Diplomas and Certificates) will qualify for these new loans from the UK government.

This quick guide gives you some key facts about applying for an Advanced Learner Loan.

For more detailed information see: [gov.uk/advanced-learner-loan](https://gov.uk/advanced-learner-loan) or phone: **0300 100 0619**.

## APPLYING IS EASY

Your household income isn't taken into account and there's no credit check. Apply now at [gov.uk/advanced-learner-loan](https://gov.uk/advanced-learner-loan)

WHEN APPLYING PLEASE HAVE THE FOLLOWING TO HAND:

- your Learning and Funding Information
- your National Insurance Number
- your valid UK passport details (if you have one)

## AM I ELIGIBLE FOR AN ADVANCED LEARNER LOAN?

To be eligible you must:

- be aged 19 or over at the start of your course

- be undertaking an eligible course at Level 3, 4, 5 or 6 qualification
- have been living in the UK for 3 years immediately before starting your course
- be a UK national or have 'settled status' (no restrictions on how long you can stay). You may be eligible if you meet certain exceptions. Further information is available from the Money Advice Service.

## HOW MUCH CAN I GET?

You can take out the maximum amount to cover your fee or you can pay all or part of the fee yourself. You may be eligible to apply to the colleges Loan Bursary scheme for support with travel expenses for example. Whilst the loan is not means tested, the Advanced Learner bursary scheme is. For further information please contact the Financial Support Team on the details below.

## I ALREADY HAVE A LEVEL 3 QUALIFICATION...

Prior attainment is not taken into account for your first Advanced Learner loan. You can take out up to a maximum of four Advanced Learner loans in total. You can only take out one loan at a time. You must complete a separate application for each loan. You are unable to take out two loans for the same qualification even if the qualifications are in a different area. For example, you would be unable to get the loan for an Extended Diploma in Science and an Extended Diploma in Beauty Therapy as they are the same qualification.

## FOR MORE INFORMATION

- Visit [nationalcareersservice.direct.gov.uk/advice/courses/funding/pages/advancedlearnerloans](https://nationalcareersservice.direct.gov.uk/advice/courses/funding/pages/advancedlearnerloans)
- Visit [gov.uk/advanced-learner-loan](https://gov.uk/advanced-learner-loan) or telephone **0300 100 0619**
- Visit [moneyadviceservice.org.uk](https://moneyadviceservice.org.uk) or telephone **0300 500 5000**
- Contact Kirklees College Financial Support Team on **0800 804 6134** or email [finsupp@kirkleescollege.ac.uk](mailto:finsupp@kirkleescollege.ac.uk)





# A KC GUARANTEE

## HIGHER EDUCATION COURSES

### **PROGRESS FROM A FULL TIME LEVEL 3 COURSE ONTO AN HNC AND RECEIVE A CASH PAYMENT OF £500 IN YOUR FIRST YEAR!**

If you currently study on a full time level 3 programme with us and meet the conditions outlined below, we will guarantee you entry to an HNC course in a similar subject area!

To take advantage of this opportunity to progress, you have to:

- Have completed and achieved your main qualification (Merit, Pass, Pass grade for Extended Diplomas)
- Attended all exams required for your programme of study, including GCSE maths and english and achieve required grade
- Submit ALL of your coursework on time
- Met the college's standards in relation to performance, attendance and behaviour

**TO FIND OUT MORE, SPEAK TO YOUR PROGRESS COACH**

*\*Offer subject to minimum student numbers on course*



# PROGRESSING TO HE

“ I’m progressing from a Level 3 in Animal Management on to an HNC. You can do Higher Education courses right here at Kirklees College.

I am already familiar with the tutors so thought I would be most comfortable staying here and the HNC will further my qualifications and career. I’ve made a lot of good friends here and most of them are progressing to the HNC too. ”

Anisa, Animal Care

# HOW TO APPLY

## HOW TO APPLY

If you are interested in one of our HE courses then you can apply directly to the college via the college website

**[www.kirkleescollege.ac.uk](http://www.kirkleescollege.ac.uk)**

Paper forms are also available.

Further information about the application process is available on the college website, or you can contact the information team on:

**[info@kirkleescollege.ac.uk](mailto:info@kirkleescollege.ac.uk)**

**01484 437070**

## INTERVIEWS

Interviews are a key aspect of our selection procedure and should confirm not only our choice of suitable students, but also your choice of course. We believe that your interview should be a positive experience and whilst we are thorough, our primary aim is to make you feel at ease and encourage you to tell us about yourself and your experiences.

Your interview letter will tell you everything that you need to bring with you.

## OPEN DAYS

The best way to find out what we have on offer is to come and visit us. You will be able to find out about courses and tour the college centres.

By talking to our current students you will be able to find out about

their experiences at Kirklees College.

For the latest information about open days, go to:

**[www.kirkleescollege.ac.uk/open-days](http://www.kirkleescollege.ac.uk/open-days)**

## HND PROGRESSION

Higher National Certificate qualifications are the equivalent to the first degree year at university. After completing your one year course in some subject areas you have the option to progress on to a second year of study to achieve a Higher National Diploma qualification.

Alternatively you could use your HNC to move on to university. Some universities will let you start in the second or third year of a degree course if you have completed an HNC or HND in a related subject at college first.

## STUDENT RECRUITMENT TEAM

The student recruitment team are here to help you get an insight into student life at the college. The team offers help and advice on choosing the right course to meet your plans and how to apply.

They attend careers and higher education fairs and make individual visits to schools and colleges.

They can also arrange individual visits to any of the college centres.

Student recruitment team:

**01484 437092**

**[schoolsliason@kirkleescollege.ac.uk](mailto:schoolsliason@kirkleescollege.ac.uk)**

### INFORMATION TEAM

For information on all college courses you can contact the information team,

tel: **01484 437070** or email:

**[info@kirkleescollege.ac.uk](mailto:info@kirkleescollege.ac.uk)**

### OPENING TIMES

9am - 4.30pm Monday to Thursday

9am - 4pm Friday

### CAREERS SERVICE

Our careers team provide unbiased and comprehensive information, advice and guidance to help you make your decision about your course, level and qualification.

You can access a wide range of information and resources via the careers team in all centre libraries and on the college VLE.

**01484 437000 ext. 7406**

**[careersguidance@kirkleescollege.ac.uk](mailto:careersguidance@kirkleescollege.ac.uk)**

### ASSESSMENT

When studying higher education at Kirklees College, assessment will form an important part of your studies. To maintain the highest standards of quality in assessment of our higher education students we regularly review and update our assessment procedures and regulations in line with our awarding bodies.

You will find the most up-to-date information on assessment across all of our higher education courses on the Kirklees College website:

**[www.kirkleescollege.ac.uk](http://www.kirkleescollege.ac.uk)**

## UCAS POINTS EQUIVALENT

A Levels		AS Levels	
A*	56 points		
A	48 points	A	20 points
B	40 points	B	16 points
C	32 points	C	12 points
D	24 points	D	10 points
E	16 points	E	6 points

# GRADUATION

A photograph of two young men sitting on a wooden bench outdoors. They are both wearing black graduation caps and gowns with red stoles. The man on the left is smiling and wearing a white shirt and black tie. The man on the right is wearing sunglasses and a colorful patterned shirt. Behind them are potted plants with purple and yellow flowers.

## YOU DON'T HAVE TO GO TO UNIVERSITY TO GET YOUR CAP AND GOWN!

Every year we hold our prestigious graduation ceremony in the majestic surroundings of Dewsbury Town Hall, giving our students the chance to enjoy their moment alongside the tutors, family and friends who have supported them through their qualification.

At Kirklees College, we love to celebrate student success so this event is undoubtedly one of the highlights in our calendar.





**“THE GRADUATION CEREMONY WAS A FANTASTIC DAY AND AN EXCELLENT WAY TO SIGNIFY AND CELEBRATE THE HARD WORK THAT WENT INTO MY COURSE. THE BEAUTIFUL SURROUNDINGS OF THE DEWSBURY TOWN HALL PROVIDED AN EXCELLENT BACK DROP TO WHAT FOR ME WAS A VERY SPECIAL DAY.”**

**GEMMA LUMB, HNC ELECTRICAL ENGINEERING**



**KIRKLEES  
COLLEGE**

info@kirkleescollege.ac.uk  
01484 437070

www.kirkleescollege.ac.uk

